

# State of Hawaii Semi-Annual Crime Summary

**Department of the Attorney General - Crime Prevention and Justice Assistance Division**  
 425 Queen Street, Honolulu, HI, 96813      (808) 586-1150      www.cpja.ag.state.hi.us

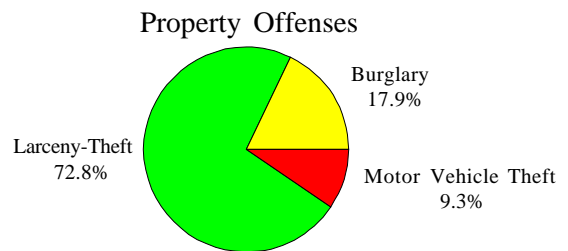
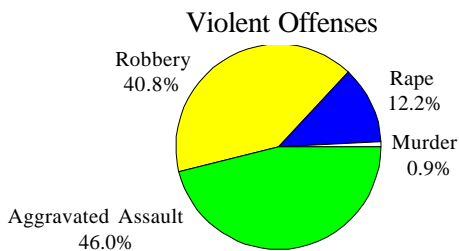
Margery S. Bronster, Attorney General  
 Thomas R. Keller, First Deputy Attorney General

Lari Koga, Administrator  
 January, 1999

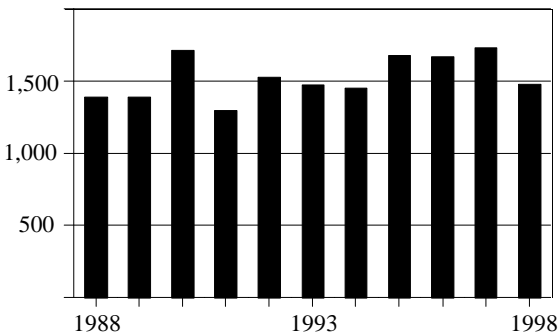
*Data derived from arrests and crimes reported to the police can only provide estimates of the actual extent of crime. Shifts in enforcement focus, isolated cases resulting in multiple arrests, and changes in social conditions that affect the likelihood that victims will report certain types of crimes are some of the factors that may affect these data.*

The number of Index Crimes\* reported in the first six months of 1998 decreased 9.0% from the number reported during the same period in 1997. In the first six months of 1998, violent crimes (murder, forcible rape, robbery, and aggravated assault) accounted for 4% of all reported Index Crimes; property crimes (burglary, larceny-theft, and motor vehicle theft) accounted for 96%. The number of violent crimes reported during the first six months of 1998 decreased 14.6% from the same period in 1997, while the number of reported property crimes decreased 8.8% to reach their lowest level since 1988 (charted below).

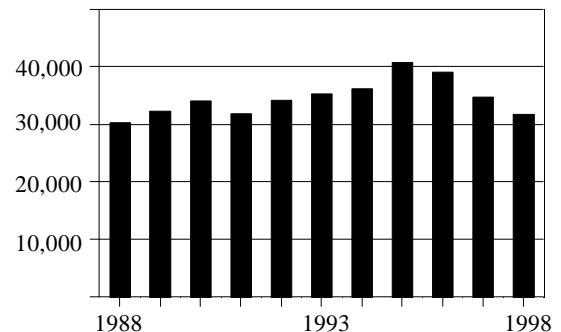
### Distribution of Offenses, First Six Months of 1998



**Reported Violent Offenses  
First Six Months 1988-1998  
State of Hawaii**



**Reported Property Offenses  
First Six Months 1988-1998  
State of Hawaii**



All 4 counties posted decreases in property crime, with Kauai County registering the largest percentage decline (21.9%). Kauai was the only county not to also report a decline in violent crime. An increase of 2 violent offenses over the number tallied in the first half of 1997 caused the violent crime count there to rise 7%. However, the large drop in property offenses gave Kauai the greatest percentage decrease in total Index Crimes (21.3%). Each of the other counties posted a double-digit percentage decrease in violent crimes.

In the first half of 1998, arrests of juveniles decreased 15% compared to the first six months of 1997, while adult arrests decreased 2%. Arrests for violent crimes plunged 37% among juveniles and eased off 4% among adults.

\*Index Crimes include murder, forcible rape, robbery, aggravated assault, burglary, larceny-theft, and motor vehicle theft.

Reported Index Offenses and Value of Property Stolen and Recovered, State of Hawaii  
January-June 1997 and January-June 1998

Reported Index Offense	January-June 1997	January-June 1998	Percent Change
Murder	16	14	-12.5
Forcible Rape	180	181	0.6
Robbery	750	603	-19.6
Aggravated Assault	785	681	-13.2
<b>Violent Subtotal</b>	<b>1,731</b>	<b>1,479</b>	<b>-14.6</b>
Burglary	6,917	5,680	-17.9
Larceny-Theft	24,580	23,098	-6.0
Motor Vehicle Theft	3,270	2,939	-10.1
<b>Property Subtotal</b>	<b>34,767</b>	<b>31,717</b>	<b>-8.8</b>
Total Index Offenses	36,498	33,196	-9.0
Clearances (Percent of Total Index Offenses Cleared)	6,332 (17.3%)	6,384 (19.2%)	0.8
Value of Property Stolen	\$35,882,277	\$33,215,398	-7.4
Value of Property Recovered (Percent of Stolen Value Recov'd)	\$7,448,981 (20.8%)	\$5,739,464 (17.3%)	-22.9

Reported Index Offenses and Value of Property Stolen and Recovered, Counties  
January-June 1998  
(Percent Change From January-June 1997)

Reported Index Offenses	City and County of Honolulu	Hawaii County	Maui County	Kauai County
Murder	11 (-21.4)	2 (0.0)	1 (N.A.*)	0 (no change)
Forcible Rape	125 (3.3)	27 (12.5)	24 (-14.3)	5 (-28.6)
Robbery	514 (-21.4)	43 (19.4)	40 (-28.6)	6 (50.0)
Aggravated Assault	525 (-11.0)	66 (-29.8)	72 (-15.3)	18 (12.5)
<b>Violent Subtotal</b>	<b>1,175 (-14.8)</b>	<b>138 (-11.5)</b>	<b>137 (-18.9)</b>	<b>29 (7.4)</b>
Burglary	3,876 (-18.3)	852 (-2.6)	714 (-22.5)	238 (-36.7)
Larceny-Theft	17,416 (-4.0)	2,326 (-9.4)	2,495 (-11.7)	861 (-17.8)
Motor Vehicle Theft	2,521 (-9.9)	175 (-2.2)	194 (-21.5)	49 (8.9)
<b>Property Subtotal</b>	<b>23,813 (-7.3)</b>	<b>3,353 (-7.4)</b>	<b>3,403** (-14.8)</b>	<b>1,148 (-21.9)</b>
Total Index Offenses	24,988 (-7.7)	3,491 (-7.6)	3,540 (-15.0)	1,177 (-21.3)
Clearances (Percent of Total Index Offenses Cleared)	4,300 (17.2)	1,197 (34.3)	566 (16.0)	321 (27.3)
Value of Property Stolen (Percent Change)	\$25,247,748 (-7.3)	\$2,354,948 (0.6)	\$4,583,149 (-11.7)	\$1,029,553 (-7.1)
Value of Property Recovered (Percent of Stolen Value Recov'd)	\$3,785,807 (15.0)	\$438,833 (18.6)	\$1,313,826 (28.7)	\$200,998 (19.5)

\* Not Applicable: no reported murder in base period, January-June, 1997.

\*\* In the report for January-June, 1997, this figure was not updated from the 1996 entry: 3,994 is the corrected statistic for the 1997 period.

Juvenile and Adult Arrests, State of Hawaii  
January-June 1997 and January-June 1998

Arrest Offense	Juvéniles			Adults		
	Jan.-June 1997	Jan.-June 1998	Percent Change	Jan.-June 1997	Jan.-June 1998	Percent Change
Murder	0	1	N.A.*	16	7	-56.3
Forcible Rape	11	4	-63.6	51	60	17.6
Robbery	171	83	-51.5	189	208	10.1
Aggravated Assault	70	71	1.4	309	265	-14.2
<b>Violent Subtotal</b>	<b>252</b>	<b>159</b>	<b>-36.9</b>	<b>565</b>	<b>540</b>	<b>-4.4</b>
Burglary	393	262	-33.3	466	408	-12.4
Larceny-Theft	1,508	1,181	-21.7	2,531	2,648	4.6
Motor Vehicle Theft	160	159	-0.6	495	479	-3.2
Arson	13	9	-30.8	7	16	128.6
<b>Property Subtotal</b>	<b>2,074</b>	<b>1,611</b>	<b>-22.3</b>	<b>3,499</b>	<b>3,551</b>	<b>1.5</b>
<b>INDEX TOTAL</b>	<b>2,326</b>	<b>1,770</b>	<b>-23.9</b>	<b>4,064</b>	<b>4,091</b>	<b>0.7</b>
Manslaughter	0	0	no change	14	6	-57.1
Other Assault	672	566	-15.8	2,103	1,907	-9.3
Forgery	5	13	160.0	194	237	22.2
Fraud	14	14	0.0	266	302	13.5
Embezzlement	0	1	N.A.*	33	18	-45.5
Stolen Property	10	4	-60.0	94	84	-10.6
Vandalism	322	202	-37.3	268	226	-15.7
Weapons	38	45	18.4	169	171	1.2
Prostitution	4	9	125.0	134	235	75.4
Sex Offenses	44	36	-18.2	167	158	-5.4
Sale/Mfg. - Opium or Cocaine	9	4	-55.6	187	212	13.4
Sale/Mfg. - Marijuana	19	17	-10.5	101	59	-41.6
Sale/Mfg. - Syn. Narcotics	0	1	N.A.*	16	10	-37.5
Sale/Mfg. - Nonnarcotics	5	0	-100.0	54	40	-25.9
Poss. - Opium or Cocaine	20	25	25.0	622	442	-28.9
Poss. - Marijuana	327	300	-8.3	352	342	-2.8
Poss. - Syn. Narcotics	2	9	350.0	114	127	11.4
Poss. - Nonnarcotics	11	7	-36.4	139	129	-7.2
Gambling	5	9	80.0	189	68	-64.0
Offenses Against Family and Children	97	90	-7.2	929	935	0.6
DUI	41	37	-9.8	2,481	2,442	-1.6
Liquor Laws	151	138	-8.6	519	495	-4.6
Disorderly Conduct	76	58	-23.7	356	313	-12.1
Curfew	263	359	36.5	not applicable	not applicable	not applicable
Runaway	2,535	2,320	-8.5	not applicable	not applicable	not applicable
All Other Offenses	2,291	1,855	-19.0	12,914	12,971	0.4
<b>PART II TOTAL</b>	<b>6,961</b>	<b>6,119</b>	<b>-12.1</b>	<b>22,415</b>	<b>21,929</b>	<b>-2.2</b>
<b>GRAND TOTAL</b>	<b>9,287</b>	<b>7,889</b>	<b>-15.1</b>	<b>26,479</b>	<b>26,020</b>	<b>-1.7</b>

\* Not Applicable: no arrests in base period, January-June, 1997.

Juvenile and Adult Arrest Totals, Counties  
January-June 1998  
(Percent Change From January-June 1997)

Arrest Offense	City and County of Honolulu	Hawaii County	Maui County	Kauai County
Murder	7 (-46.2)	1 (-66.7)	0 (no change)	0 (no change)
Forcible Rape	48 (23.1)	8 (-42.9)	8 (-11.1)	0 (no change)
Robbery	230 (-21.2)	31 (-6.1)	25 (-24.2)	5 (150.0)
Aggravated Assault	232 (-12.5)	37 (-28.8)	49 (-7.5)	18 (100.0)
<b>Violent Subtotal</b>	<b>517 (-15.1)</b>	<b>77 (-24.5)</b>	<b>82 (-13.7)</b>	<b>23 (109.1)</b>
Burglary	367 (-13.6)	168 (-31.1)	76 (-42.9)	59 (3.5)
Larceny-Theft	2,895 (6.9)	454 (-36.0)	308 (-28.2)	172 (-10.4)
Motor Vehicle Theft	509 (1.6)	61 (-22.8)	39 (-39.1)	29 (163.6)
Arson	22 (100.0)	1 (-85.7)	1 (-50.0)	1 (N.A.*)
<b>Property Subtotal</b>	<b>3,793 (4.0)</b>	<b>684 (-34.2)</b>	<b>424 (-32.5)</b>	<b>261 (0.4)</b>
<b>INDEX TOTAL</b>	<b>4,310 (1.3)</b>	<b>761 (-33.3)</b>	<b>506 (-30.0)</b>	<b>284 (4.8)</b>
Manslaughter	1 (-50.0)	5 (-37.5)	0 (-100.0)	0 (no change)
Other Assault	1,533 (-11.2)	453 (-18.4)	313 (-10.3)	174 (20.0)
Forgery	184 (26.9)	21 (-43.2)	31 (106.7)	14 (600.0)
Fraud	228 (31.8)	50 (-27.5)	19 (-32.1)	19 (90.0)
Embezzlement	6 (-50.0)	1 (-91.7)	10 (25.0)	2 (100.0)
Stolen Property	82 (-17.2)	4 (300.0)	2 (-50.0)	0 (no change)
Vandalism	291 (-28.3)	60 (-42.3)	21 (-16.0)	56 (1.8)
Weapons	159 (8.9)	23 (-8.0)	29 (-3.3)	5 (-16.7)
Prostitution	223 (72.9)	21 (133.3)	0 (no change)	0 (no change)
Sex Offense	140 (8.5)	24 (-57.9)	21 (0.0)	9 (125.0)
Sale/Mfg. - Opium or Cocaine	137 (26.9)	66 (-15.4)	13 (30.0)	0 (no change)
Sale/Mfg. - Marijuana	25 (-13.8)	30 (-45.5)	21 (-36.4)	0 (-100.0)
Sale/Mfg. - Syn. Narcotics	5 (400.0)	1 (N.A.*)	5 (-66.7)	0 (no change)
Sale/Mfg. - Nonnarcotics	27 (-44.9)	13 (30.0)	0 (no change)	0 (no change)
Poss. - Opium or Cocaine	392 (-29.0)	33 (-21.4)	26 (-7.1)	16 (-20.0)
Poss. - Marijuana	351 (-4.9)	113 (-27.6)	128 (25.5)	50 (-3.8)
Poss. - Syn. Narcotics	32 (N.A.*)	0 (no change)	76 (-24.0)	28 (75.0)
Poss. - Nonnarcotics	120 (-16.7)	14 (180.0)	2 (100.0)	0 (no change)
Gambling	62 (-47.5)	0 (-100.0)	11 (-84.1)	4 (100.0)
Offenses Against Family and Children	909 (-4.0)	8 (0.0)	6 (-62.5)	102 (85.5)
DUI	1,390 (-14.7)	446 (30.4)	495 (14.3)	148 (26.5)
Liquor Laws	341 (-2.8)	98 (-35.9)	94 (-37.3)	100 (525.0)
Disorderly Conduct	201 (-22.7)	73 (-1.4)	85 (-3.4)	12 (20.0)
Curfew	89 (-29.9)	48 (-18.6)	46 (43.8)	176 (291.1)
Runaway	1,834 (-10.4)	241 (1.3)	92 (-24.0)	153 (17.7)
All Other Offenses	10,613 (-7.0)	2,001 (19.3)	1,283 (2.9)	929 (7.3)
<b>PART II TOTAL</b>	<b>19,375 (-8.2)</b>	<b>3,847 (1.8)</b>	<b>2,839 (-3.1)</b>	<b>1,997 (28.4)</b>
<b>GRAND TOTAL</b>	<b>23,685 (-6.6)</b>	<b>4,608 (-6.5)</b>	<b>3,335 (-8.7)</b>	<b>2,281 (24.9)</b>

\* Not Applicable: no arrests in base period, January-June, 1997.