

State of Hawaii Semi-Annual Crime Summary

Department of the Attorney General - Crime Prevention and Justice Assistance Division
235 S. Beretania St, Honolulu, HI, 96813 (808) 586-1150 www.cpja.ag.state.hi.us

Earl I. Anzai, Attorney General
 Thomas R. Keller, First Deputy Attorney General

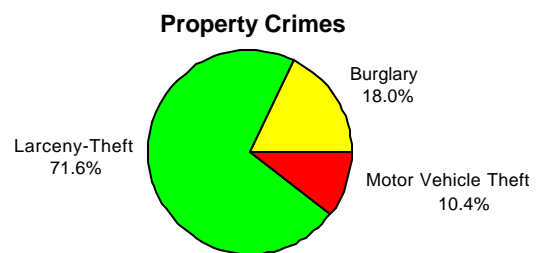
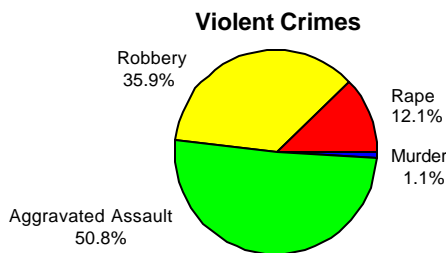
Research & Statistics Branch
 January, 2001

Data derived from arrests and crimes reported to the police can only provide estimates of the actual extent of crime. Shifts in law enforcement focus, isolated cases resulting in multiple arrests, and broader societal changes that affect the likelihood that victims will report certain types of crimes are some of the factors that may affect these data.

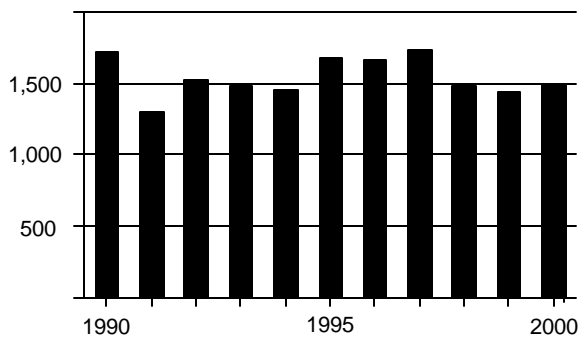
The number of Index Crimes* reported in the first six months of 2000 increased 10.0% from the number reported during the same period in 1999. In the first half of 2000, violent crimes (murder, forcible rape, robbery, and aggravated assault) accounted for 5% of all reported Index Crimes; property crimes (burglary, larceny-theft, and motor vehicle theft) accounted for 95%. The number of violent crimes reported during the first six months of 2000 increased 3.5% from the same period in 1999, while the number of reported property crimes increased 10.4% to post its second lowest level since 1986 (not shown in chart below).



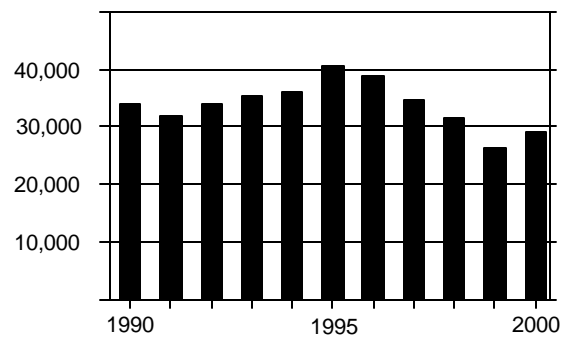
Distribution of Reported Offenses, First Six Months of 2000



Reported Violent Crimes
 First Six Months 1990-2000
 State of Hawaii



Reported Property Crimes
 First Six Months 1989-1999
 State of Hawaii



All 4 counties posted increases in total Index Crimes and property crime, with Kauai County reporting the largest increases (18.9% and 13.8%, respectively). Kauai County also posted the greatest percentage increase in violent crimes (232.0%), while the City & County of Honolulu's 0.4% and Maui County's 7.0% reductions in violent crimes were the only decreases recorded.

Juvenile arrests decreased 9% and adult arrests increased 4% from the first six months of 1999. Arrests for violent crimes were down 3% among juveniles and rose 13% among adults.

Although Index Crimes increased in the first half of 2000, they remained below the number reported for the first half of 1998, well below the numbers reported for the years dating back to 1995 (when Index Crimes were at their highest point in the past decade), and below the average number reported historically.

*Index Crimes include murder, forcible rape, robbery, aggravated assault, burglary, larceny-theft, and motor vehicle theft.

Reported Index Crimes and Value of Property Stolen and Recovered, State of Hawaii

January-June 1999 and January-June 2000

Reported Offense	January-June 1999	January-June 2000	Percent Change
Total Index Crimes	27,942	30,749	10.0
Violent Crimes	1,441	1,491	3.5
Murder	11	16	45.5
Forcible Rape	195	181	-7.2
Robbery	546	536	-1.8
Aggravated Assault	689	758	10.0
Property Crimes	26,501	29,258	10.4
Burglary	4,736	5,258	11.0
Larceny-Theft	19,621	20,948	6.8
Motor Vehicle Theft	2,144	3,052	42.4
Clearances (Percent of Total Index Offenses Cleared)	5,416 (19.4%)	4,706 (15.3%)	-13.1
Value of Property Stolen	\$25,680,662	\$27,032,546	5.3
Value of Property Recovered (Percent of Stolen Value Recovered)	\$4,312,665 (16.8%)	\$4,239,161 (15.7%)	-1.7

Reported Index Crimes and Value of Property Stolen and Recovered, Counties

January-June 2000

(Percent Change From January-June 1999)

Reported Offense	City and County of Honolulu	Hawaii County	Maui County	Kauai County
Total Index Crimes	22,897 (10.7)	3,057 (0.8)	3,523 (11.5)	1,272 (18.9)
Violent Crimes	1,138 (-0.4)	138 (5.3)	132 (-7.0)	83 (232.0)
Murder	9 (28.6)	3 (-25.0)	1 (N.A.*)	3 (N.A.*)
Forcible Rape	116 (-10.8)	31 (10.7)	15 (-34.8)	19 (35.7)
Robbery	473 (0.6)	26 (4.0)	29 (-37.0)	8 (60.0)
Aggravated Assault	540 (0.7)	78 (5.4)	87 (19.2)	53 (783.3)
Property Crimes	21,759 (11.4)	2,919 (0.6)	3,391 (12.3)	1,189 (13.8)
Burglary	3,458 (11.1)	674 (-8.4)	852 (29.5)	274 (19.1)
Larceny-Theft	15,644 (7.2)	2,081 (3.6)	2,342 (4.9)	881 (11.5)
Motor Vehicle Theft	2,657 (45.0)	164 (4.5)	197 (52.7)	34 (36.0)
Clearances (Percent of Total Index Offenses Cleared)	3,045 (13.3)	914 (29.9)	510 (14.5)	237 (18.6)
Value of Property Stolen (Percent Change)	\$20,253,226 (4.6)	\$2,701,425 (17.4)	\$3,117,636 (-5.1)	\$960,259 (30.4)
Value of Property Recovered (Percent of Stolen Value Recovered)	\$2,790,344 (13.8)	\$260,202 (9.6)	\$981,148 (31.5)	\$207,467 (21.6)

* Not Applicable: no reported murder in base period, January-June 1999.

Juvenile and Adult Arrests, State of Hawaii
January-June 1998 and January-June 1999

Arrest Offense	Juveniles			Adults		
	Jan-June 1999	Jan-June 2000	Percent Change	Jan-June 1999	Jan-June 2000	Percent Change
Total Index Crime Arrests	1,662	1,419	-14.6	3,326	3,184	-4.3
Violent Crime Arrests	158	154	-2.5	505	573	13.5
Murder	1	1	0.0	16	16	0.0
Forcible Rape	8	4	-50.0	44	50	13.6
Robbery	80	78	-2.5	161	180	11.8
Aggravated Assault	69	71	2.9	284	327	15.1
Property Crime Arrests	1,504	1,265	-15.9	2,821	2,611	-7.4
Burglary	297	178	-40.1	353	309	-12.5
Larceny-Theft	1,034	933	-9.8	2,147	1,830	-14.8
Motor Vehicle Theft	166	145	-12.7	317	455	43.5
Arson	7	9	28.6	4	17	325.0
Total Part II Arrests	5,751	5,335	-7.2	21,787	22,811	4.7
Manslaughter	0	0	no change	9	6	-33.3
Other Assault	536	591	10.3	1,630	1,606	-1.5
Forgery	10	6	-40.0	175	183	4.6
Fraud	12	32	166.7	230	216	-6.1
Embezzlement	0	1	not applicable*	17	19	11.8
Stolen Property	6	3	-50.0	39	33	-15.4
Vandalism	201	228	13.4	243	218	-10.3
Weapons	32	34	6.3	105	130	23.8
Prostitution	10	6	-40.0	282	229	-18.8
Sex Offenses	41	64	56.1	176	131	-25.6
Sale/Mfg. - Opium or Cocaine	1	0	-100.0	165	157	-4.8
Sale/Mfg. - Marijuana	18	30	66.7	64	64	0.0
Sale/Mfg. - Syn. Narcotics	1	1	0.0	22	9	-59.1
Sale/Mfg. - Nonnarcotics	1	14	1,300.0	45	65	44.4
Poss. - Opium or Cocaine	5	5	0.0	354	303	-14.4
Poss. - Marijuana	345	251	-27.2	336	306	-8.9
Poss. - Syn. Narcotics	6	3	-50.0	112	126	12.5
Poss. - Nonnarcotics	6	8	33.3	77	148	92.2
Gambling	14	9	-35.7	209	143	-31.6
Offenses Against Family and	76	52	-31.6	783	835	6.6
DUI	67	57	-14.9	2,530	2,226	-12.0
Liquor Laws	164	121	-26.2	637	339	-46.8
Disorderly Conduct	23	30	30.4	257	211	-17.9
Curfew	266	209	-21.4	not applicable	not applicable	not applicable
Runaway	2,150	2,395	11.4	not applicable	not applicable	not applicable
All Other Offenses	1,760	1,185	-32.7	13,290	15,108	13.7
TOTAL ARRESTS	7,413	6,754	-8.9	25,113	25,995	3.5

* No arrests in base period, January-June, 1999

Arrest Totals, Counties
 January-June 2000
 (Percent Change From January-June 1999)

Arrest Offense	City and County of Honolulu	Hawaii County	Maui County	Kauai County
Total Index Arrests	3,229 (-9.1)	591 (-15.3)	524 (-6.4)	259 (45.5)
Violent Crime Arrests	524 (5.2)	68 (-11.7)	76 (5.6)	59 (268.8)
Murder	13 (30.0)	2 (-71.4)	1 (N.A.*)	1 (N.A.*)
Forcible Rape	24 (-14.3)	12 (9.1)	6 (0.0)	12 (71.4)
Robbery	227 (17.6)	11 (-45.0)	17 (-29.2)	3 (-25.0)
Aggravated Assault	260 (-2.6)	43 (10.3)	52 (23.8)	43 (760.0)
Property Crime Arrests	2,705 (-11.4)	523 (-15.8)	448 (-8.2)	200 (23.5)
Burglary	276 (-24.8)	83 (-31.4)	85 (-27.4)	43 (-4.4)
Larceny-Theft	1,932 (-16.3)	381 (-12.4)	303 (-7.1)	147 (32.4)
Motor Vehicle Theft	478 (28.8)	54 (-12.9)	60 (36.4)	8 (33.3)
Arson	19 (171.4)	5 (66.7)	0 (-100.0)	2 (N.A.*)
Total Part II Arrests	19,300 (4.0)	4,245 (-1.6)	3,112 (5.7)	1,489 (-13.5)
Manslaughter	3 (50.0)	2 (-60.0)	1 (-50.0)	0 (no change)
Other Assault	1,304 (0.6)	418 (-6.7)	282 (8.5)	193 (19.1)
Forgery	149 (4.9)	7 (-41.7)	29 (7.4)	4 (0.0)
Fraud	153 (18.6)	30 (-40.0)	30 (-14.3)	35 (25.0)
Embezzlement	8 (33.3)	1 (-75.0)	8 (100.0)	3 (0.0)
Stolen Property	36 (-2.7)	0 (-100.0)	0 (-100.0)	0 (no change)
Vandalism	304 (-1.3)	67 (-23.9)	26 (116.7)	49 (36.1)
Weapons	102 (13.3)	25 (78.6)	27 (8.0)	10 (25.0)
Prostitution	223 (-16.8)	7 (-61.1)	5 (-16.7)	0 (no change)
Sex Offenses	143 (-11.7)	27 (0.0)	18 (100.0)	7 (-63.2)
Sale/Mfg. - Opium or Cocaine	102 (-12.8)	47 (80.8)	8 (-65.2)	0 (no change)
Sale/Mfg. - Marijuana	40 (25.0)	33 (-13.2)	21 (75.0)	0 (no change)
Sale/Mfg. - Syn. Narcotics	5 (-16.7)	0 (-100.0)	5 (-66.7)	0 (no change)
Sale/Mfg. - Nonnarcotics	26 (44.4)	49 (75.0)	4 (N.A.*)	0 (no change)
Poss. - Opium or Cocaine	264 (-16.5)	12 (-25.0)	23 (9.5)	9 (50.0)
Poss. - Marijuana	311 (-13.1)	100 (-26.5)	106 (-20.9)	40 (-24.5)
Poss. - Syn. Narcotics	32 (-34.7)	0 (no change)	62 (8.8)	35 (191.7)
Poss. - Nonnarcotics	104 (-38.7)	20 (566.7)	21 (320.0)	11 (N.A.*)
Gambling	74 (-56.7)	0 (-100.0)	78 (188.9)	0 (no change)
Offenses Against Family and	842 (10.8)	16 (45.5)	9 (-18.2)	20 (-74.0)
DUI	1,339 (-1.5)	588 (-8.3)	241 (-45.2)	115 (-26.8)
Liquor Laws	171 (-65.5)	195 (4.3)	68 (-13.9)	26 (-33.3)
Disorderly Conduct	95 (-15.9)	51 (-32.0)	76 (-5.0)	19 (58.3)
Curfew	94 (42.4)	21 (-56.2)	23 (-51.1)	71 (-32.4)
Runaway	1,942 (15.2)	265 (-4.3)	74 (13.8)	114 (-6.6)
All Other Offenses	11,434 (8.9)	2,264 (6.3)	1,867 (20.9)	728 (-17.2)
TOTAL ARRESTS	22,529 (1.9)	4,836 (-3.5)	3,636 (3.7)	1,748 (-8.0)

* Not Applicable: no arrests in base period, January-June, 1999.