

Drug Offense Arrests in Hawaii, 1982-1998

DEPARTMENT OF THE ATTORNEY GENERAL — CRIME PREVENTION & JUSTICE ASSISTANCE DIVISION

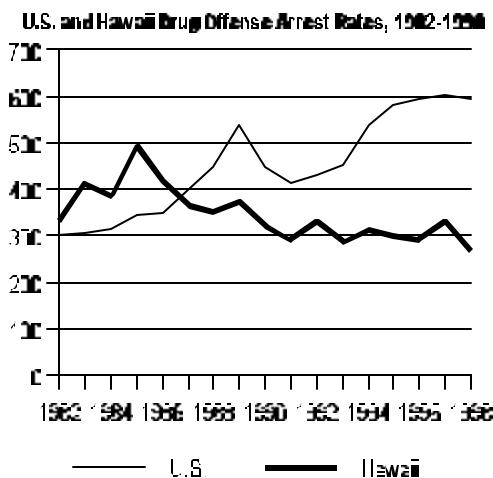
Earl I. Anzai, Attorney General
Thomas R. Keller, First Deputy

Lari Koga, Administrator
May 2000



Prepared by **James Richmond**, Research Statistician,
and **Paul Perrone**, Chief of Research & Statistics

As with crime statistics in general, Hawaii's statistics for drug offense arrests differ markedly from those of the nation as a whole. National adult and juvenile arrests for drug offenses both peaked in 1989, with adult arrests estimated at approximately 1.25 million and juvenile arrests estimated at 110,000. In 1994, however, the 1989 peak in total drug arrests was regained. Adult arrests then continued steadily upward through 1998, while juvenile drug arrests increased steadily though 1997 before retreating slightly in 1998. Total drug offense arrests were estimated at 1,559,100 in 1998.



The chart at left shows drug offense arrest rates per 100,000 population for the United States and Hawaii from 1982-1998. The U.S. rate was lower than the Hawaii rate from 1982-1986. In 1987, the U.S. rate exceeded the Hawaii rate and continued to increase to over twice the Hawaii rate by 1998. The 1998 estimate of total drug offense arrests in the nation amounted to almost 11% of the estimated arrests for all offenses except traffic. In Hawaii in 1998, only slightly more than 5% of the arrests were for drug offenses. The 1998 difference in the proportion of drug arrests accounted for by juveniles – about 13% in the nation vs. 23% in Hawaii – is more indicative of an unusually low adult drug offense arrest rate in Hawaii than a high juvenile drug offense arrest rate.

Adult and juvenile drug offense arrests in Hawaii declined from the high levels set in 1983-1985 to reach their lowest point in 10 years in 1991. After 1991, drug offense arrests of adults increased slightly before resuming their decline to reach, in 1998, their lowest point in the 17-year study period.¹ Meanwhile, juvenile drug offense arrests essentially doubled from 1991 to 1995, before falling slightly in 1996, 1997, and 1998. In sum, by 1998, drug arrests were down 11% from the total number recorded in 1995, the peak year for total reported serious crimes in the 1990s.

Drug offense arrests of adults in the City and County of Honolulu declined 54% from 3,332 at the 1985 peak to 1,530 in 1998. Juvenile drug offense arrests in Honolulu showed two major trends during the study period, dropping 75% from 558 in 1985 to 140 in 1991, then rebounding 156% to 359 by 1998.

Hawaii County experienced two pronounced peaks in both adult and juvenile drug offense arrests during the study period. Adult arrests were highest in 1986 and 1995, at 574 and 505, respectively, and lowest in 1991 at 295. The decline from 1986 to 1991 amounted to 49%, the ensuing rise to 1995 was 71%, followed by a final decrease of 25% to reach 1998's level of 381 adult arrests. Juvenile arrests in Hawaii County peaked in 1985 and 1995 at 211 and 316, respectively, and were lowest in between these years at 140 in 1989. The decline from 1985 to

¹ This report is an update to a prior report on the 15-year period 1982-1986. The most recent two years of statistics were accommodated without deleting the oldest data, hence the 17-year analysis reported herein.

1989 measured 34%, the following rise to 1995 was 126%, and the final decline to 159 juvenile arrests in 1998 amounted to 50%.

Maui County recorded generally rising adult drug arrests, and a slow fall in juvenile drug arrests from 1982 to 1990 followed by a steeper rise through 1998. Adult arrests increased 149% from 162 in 1982 to 403 in 1998, while juvenile arrests fell 49% from 95 in 1982 to 48 in 1990, then rose 204% to 146 in 1998.

Kauai County experienced the most variability in drug offense arrest trends among the four counties. However, Kauai's drug arrest trends most closely resemble those of Hawaii County. Both adult and juvenile arrests on Kauai reached their highest point in 1985 at 169 and 104, respectively, and their lowest point in 1992, at 51 and 20, respectively. Adult arrests reached a second peak in 1995 at 129, then declined to 109 by 1998. Juvenile arrests also peaked a second time in 1995 at 76, decreased in 1996, then rebounded to again reach 76 in 1998. In percentage terms, adult arrests fell 70% and juvenile arrests fell 81% from 1985 to 1992. The ensuing increases to 1995 amounted to 153% for adults and 280% for juveniles, while from 1995 to 1998 adult arrests decreased 16% and juvenile arrests were unchanged.

Looking at statewide 1998 drug offense arrests by age, about 4% of the juvenile arrestees were under 13 years of age, while 29% were 13 or 14 years old. Fifteen year-olds accounted for 26% and 16 year-olds for 22% of the juvenile arrests, while 17 year-olds contributed over 16%. Roughly 20% of the adult arrestees were distributed into each of the first four age groups (18-24, 25-29, 30-34, and 35-39), with this percentage being progressively diminished in each of the following age groups.

Arrests of adult males for drug offenses in 1998 totaled 3.1 times the number of adult females arrested. Among juveniles, 3.4 males were arrested for every female.

By race, Caucasians and Hawaiians/Part-Hawaiians accounted for 35% and 22%, respectively, of the 1998 adult arrests for drug offenses, while Filipinos were the third largest group, comprising about 15%. Hawaiians/Part-Hawaiians accounted for 39% of the juvenile drug offense arrests and Caucasians 26%, with Filipinos at 13%.

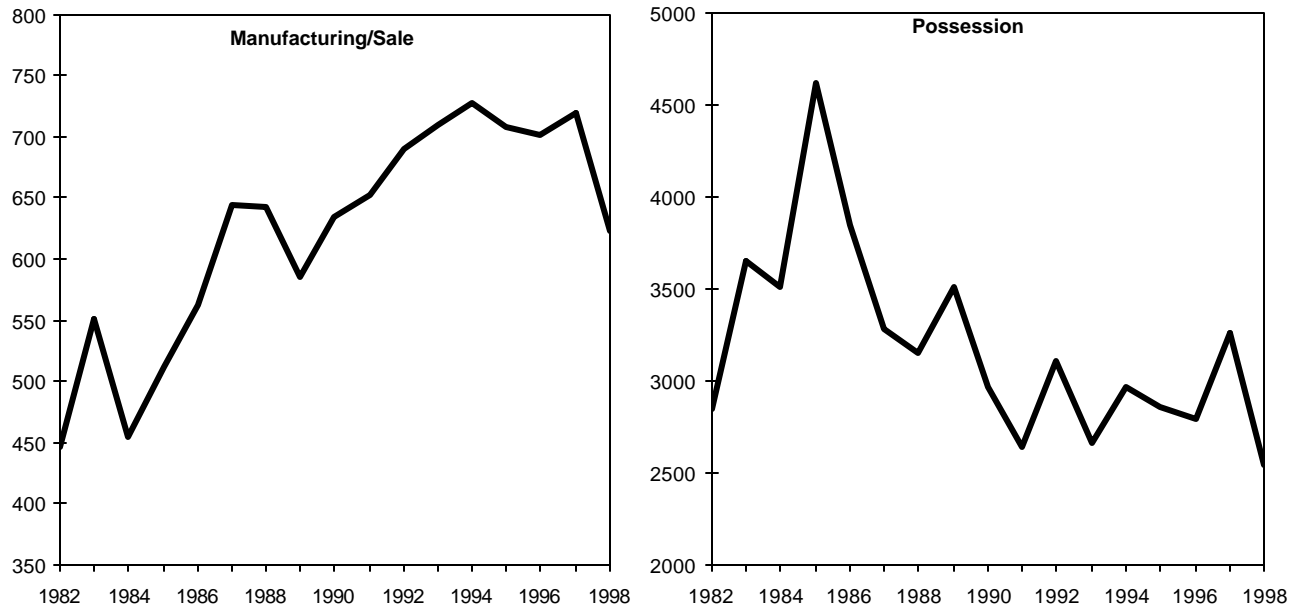
The charts at the top of the following page group drug offense arrests into "manufacturing and sale" and "possession" categories. Adult arrests for manufacturing and sale increased from 432 in 1982 to peak at 669 in 1994, and settle at 573 in 1998. The proportion of adult drug arrests accounted for by manufacturing and sale was 18% throughout the study period, but rose to 24% in 1998 while adult drug arrests in sum fell 25%. Thus, all of the declining trend in adult drug arrests has been due to decreases in the number of arrests for possession.

Juvenile manufacturing and sale arrests showed much more of an increasing trend than did the corresponding adult arrests, moving from 14 in 1982 to peak at 71 in 1996 before settling to 50 in 1998. While these numbers are small and thus may be expected to display excessive variability, the rising trend is nevertheless distinct. Manufacturing and sale arrests accounted for 6% of juvenile drug arrests throughout the study period and 7% in 1998.

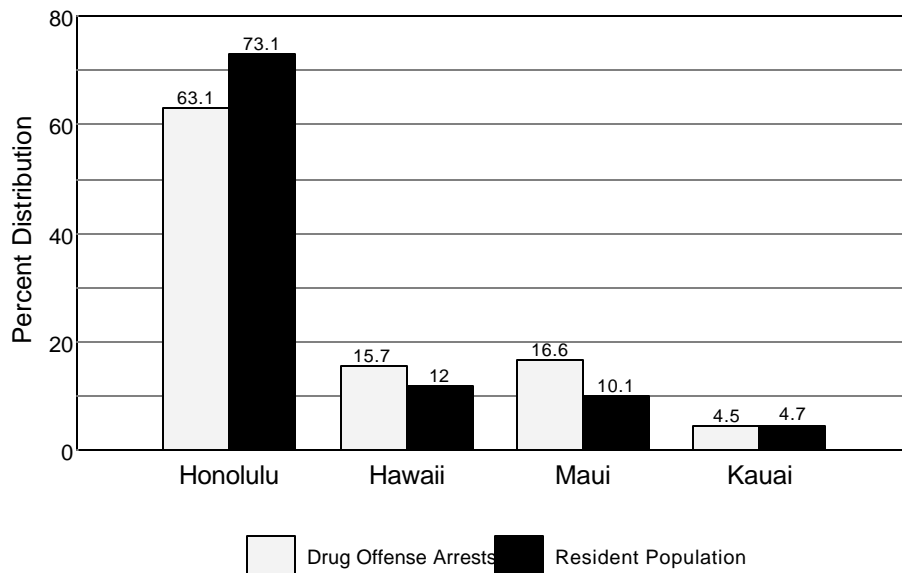
The data presented in this report were obtained from the Uniform Crime Reporting (UCR) Program in Hawaii, in which all four county police departments submit monthly data on reported offenses, arrests, and values lost in various crimes to the Department of the Attorney General. In the UCR Program, an arrest is counted each time the police process an arrestee. In recording multiple charge arrests, a hierarchy rule is used to count only the most serious charge (i.e., all other charges are not recorded in UCR). Because drug offenses are classified among the less serious offenses, and also because police have discretion as to which of multiple offenses within the less severe group will be scored for UCR, these statistics are at best suggestive and cannot be expected to necessarily approach the actual counts of individuals charged with drug offenses.

This report can be downloaded in *Portable Document File* (PDF) format from the Crime Prevention & Justice Assistance Division's web site: www.cpja.ag.state.hi.us

Manufacturing/Sale and Possession Arrests State of Hawaii, 1982-1998



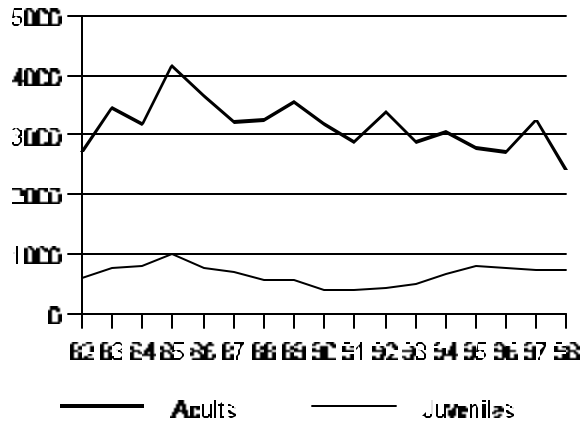
Percent Distribution by County: Drug Offense Arrests vs. Resident Population, State of Hawaii, 1998



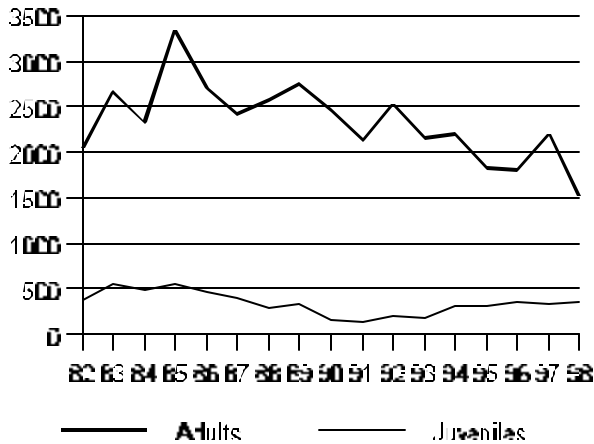
Source: Hawaii Uniform Crime Reporting Program

Drug Offense Arrests, 1982-1998

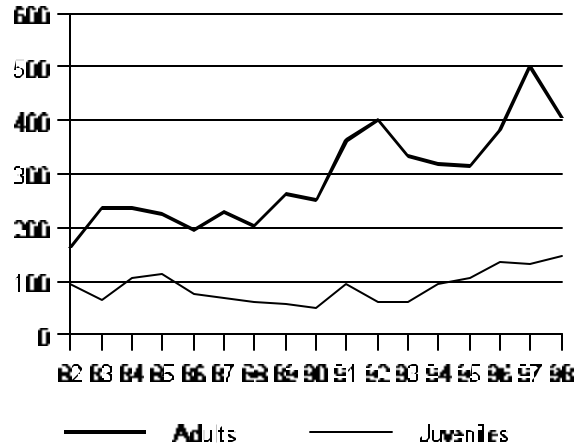
State of Hawaii



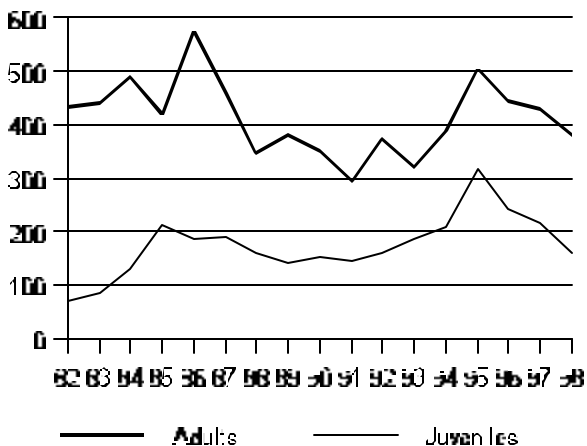
City & County of Honolulu



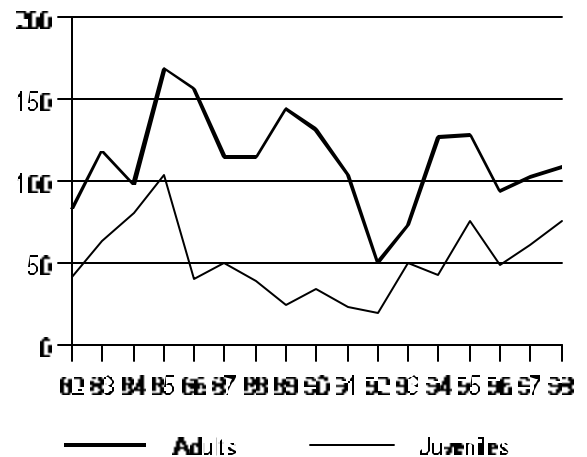
Maui County



Hawaii County



Kauai County



Drug Offense Arrests, State of Hawaii, 1982-1998, Adults

	Man./Sale: Opium or Cocaine	Man./Sale: Marijuana	Man./Sale: Synthetic Narcotic	Man./Sale: Nonnarcotic	Total Manufacture/ Sale Arrests	Possession: Opium or Cocaine	Possession: Marijuana	Possession: Synthetic Narcotic	Possession: Nonnarcotic	Total Possession Arrests	Total Drug Offense Arrests	% of Total Adult Arrests
1998	354	129	21	69	573	786	621	255	188	1,850	2,423	5.0
1997	351	176	36	100	663	1,206	795	254	315	2,570	3,233	6.1
1996	401	126	38	66	631	1,135	623	155	175	2,088	2,719	5.6
1995	398	155	22	75	650	1,070	706	124	216	2,116	2,766	5.4
1994	461	154	17	37	669	1,195	793	69	304	2,361	3,030	6.3
1993	411	204	6	36	657	1,076	836	34	290	2,236	2,893	6.5
1992	414	197	4	33	648	1,423	1,058	6	231	2,718	3,366	7.3
1991	394	190	0	25	609	1,129	1,028	6	121	2,284	2,893	6.2
1990	383	206	0	17	606	1,051	1,431	3	103	2,588	3,194	6.7
1989	253	249	12	29	543	1,143	1,657	61	142	3,003	3,546	7.5
1988	309	288	8	19	624	653	1,837	39	89	2,618	3,242	7.5
1987	268	321	4	17	610	498	2,055	14	46	2,613	3,223	8.3
1986	209	318	2	4	533	588	2,464	16	34	3,102	3,635	10.2
1985	202	277	3	6	488	475	3,120	14	48	3,657	4,145	11.2
1984	119	247	55	8	429	388	2,281	23	42	2,734	3,163	10.0
1983	126	176	212	21	535	337	2,425	57	95	2,914	3,449	11.5
1982	73	186	163	10	432	197	2,017	29	41	2,284	2,716	9.7

Juveniles

	Man./Sale: Opium or Cocaine	Man./Sale: Marijuana	Man./Sale: Synthetic Narcotic	Man./Sale: Nonnarcotic	Total Manufacture/ Sale Arrests	Possession: Opium or Cocaine	Possession: Marijuana	Possession: Synthetic Narcotic	Possession: Nonnarcotic	Total Possession Arrests	Total Drug Offense Arrests	% of Total Juvenile Arrests
1998	11	37	2	0	50	31	636	13	10	690	740	5.1
1997	14	38	0	5	57	38	616	13	19	686	743	4.4
1996	21	46	0	4	71	38	649	12	6	705	776	4.4
1995	16	36	0	6	58	30	699	7	10	746	804	4.3
1994	11	43	0	5	59	35	551	2	17	605	664	3.2
1993	15	32	0	6	53	23	385	1	17	426	479	2.5
1992	13	25	0	4	42	42	327	0	21	390	432	2.3
1991	10	32	0	2	44	39	312	0	8	359	403	2.4
1990	8	20	1	0	29	26	328	7	13	374	403	2.4
1989	20	20	2	0	42	65	416	16	10	507	549	3.4
1988	4	11	0	3	18	32	477	2	20	531	549	3.4
1987	12	23	0	0	35	32	631	2	6	671	706	4.4
1986	3	21	0	5	29	26	713	0	6	745	774	5.3
1985	5	17	0	2	24	21	931	6	5	963	987	7.2
1984	1	21	0	3	25	48	721	6	4	779	804	7.0
1983	0	15	1	0	16	16	723	0	1	740	756	7.0
1982	1	12	0	1	14	2	562	1	3	568	582	5.0

Drug Offense Arrests, City and County of Honolulu, 1982-1998, Adults

	Man./Sale: Opium or Cocaine	Man./Sale: Marijuana	Man./Sale: Synthetic Narcotic	Man./Sale: Nonnarcotic	Total Manufacture/ Sale Arrests	Possession: Opium or Cocaine	Possession: Marijuana	Possession: Synthetic Narcotic	Possession: Nonnarcotic	Total Possession Arrests	Total Drug Offense Arrests	% of Total Adult Arrests
1998	229	31	5	48	313	656	340	53	168	1,217	1,530	4.7
1997	211	44	1	86	342	1,054	499	9	295	1,857	2,199	5.9
1996	260	22	0	62	344	949	336	0	171	1,456	1,800	5.2
1995	257	55	0	67	379	868	380	2	189	1,439	1,818	4.8
1994	333	54	5	36	428	1,002	474	0	292	1,768	2,196	6.1
1993	316	61	4	35	416	954	510	0	285	1,749	2,165	6.6
1992	302	76	4	30	412	1,176	725	1	226	2,128	2,540	7.3
1991	328	40	0	20	388	950	690	0	103	1,743	2,131	6.1
1990	265	69	0	16	350	870	1,152	0	89	2,111	2,461	6.8
1989	171	78	12	26	287	979	1,304	59	128	2,470	2,757	7.4
1988	275	85	8	17	385	546	1,531	36	79	2,192	2,577	7.5
1987	214	133	4	15	366	400	1,612	12	30	2,054	2,420	8.0
1986	149	138	2	4	293	467	1,913	9	26	2,415	2,708	10.1
1985	117	114	3	2	236	382	2,660	11	43	3,096	3,332	11.5
1984	85	130	55	6	276	315	1,694	23	31	2,063	2,339	9.7
1983	81	86	212	17	396	299	1,827	55	77	2,258	2,654	11.3
1982	44	111	163	5	323	158	1,498	29	31	1,716	2,039	9.3

Juveniles

	Man./Sale: Opium or Cocaine	Man./Sale: Marijuana	Man./Sale: Synthetic Narcotic	Man./Sale: Nonnarcotic	Total Manufacture/ Sale Arrests	Possession: Opium or Cocaine	Possession: Marijuana	Possession: Synthetic Narcotic	Possession: Nonnarcotic	Total Possession Arrests	Total Drug Offense Arrests	% of Total Juvenile Arrests
1998	3	22	1	0	26	29	292	5	7	333	359	3.4
1997	5	17	0	5	27	28	264	0	16	308	335	2.7
1996	12	27	0	4	43	32	268	1	6	307	350	2.8
1995	9	12	0	6	27	23	246	0	9	278	305	2.3
1994	7	32	0	3	42	29	231	1	16	277	319	2.1
1993	14	14	0	3	31	22	116	0	13	151	182	1.3
1992	4	16	0	2	22	40	114	0	17	171	193	1.4
1991	5	22	0	0	27	30	80	0	3	113	140	1.2
1990	7	7	0	0	14	25	126	3	1	155	169	1.5
1989	15	13	2	0	30	58	219	16	6	299	329	2.8
1988	1	2	0	2	5	26	251	2	8	287	292	2.4
1987	11	20	0	0	31	30	329	2	3	364	395	3.2
1986	3	14	0	2	19	17	429	0	5	451	470	4.5
1985	1	12	0	0	13	14	528	3	0	545	558	5.5
1984	1	13	0	0	14	45	423	1	2	471	485	5.7
1983	0	12	1	0	13	12	520	0	0	532	545	6.6
1982	1	3	0	1	5	1	368	1	2	372	377	4.3

Drug Offense Arrests, Hawaii County, 1982-1998, Adults

	Man./Sale: Opium or Cocaine	Man./Sale: Marijuana	Man./Sale: Synthetic Narcotic	Man./Sale: Nonnarcotic	Total Manufacture/ Sale Arrests	Possession: Opium or Cocaine	Possession: Marijuana	Possession: Synthetic Narcotics	Possession: Nonnarcotic	Total Possession Arrests	Total Drug Offense Arrests	% of Total Adult Arrests
1998	103	68	1	21	193	56	116	0	16	188	381	5.2
1997	123	78	1	13	215	70	130	0	14	214	429	6.1
1996	116	69	0	2	187	94	162	0	1	257	444	7.0
1995	108	81	0	8	197	114	175	1	18	308	505	9.2
1994	115	65	0	0	180	85	121	0	4	210	390	8.9
1993	68	99	0	1	168	37	114	0	3	154	322	7.6
1992	76	84	0	3	163	53	152	0	5	210	373	8.6
1991	29	107	0	5	141	39	108	0	7	154	295	6.7
1990	54	94	0	1	149	32	165	0	5	202	351	7.9
1989	36	106	0	3	145	20	210	0	6	236	381	8.3
1988	27	144	0	2	173	16	154	0	5	175	348	8.7
1987	35	153	0	2	190	34	228	0	7	269	459	11.6
1986	51	159	0	0	210	47	313	0	4	364	574	14.6
1985	46	104	0	1	151	26	243	0	0	269	420	12.5
1984	20	104	0	2	126	22	337	0	5	364	490	17.5
1983	20	86	0	1	107	16	310	0	8	334	441	18.3
1982	11	68	0	5	84	16	325	0	7	348	432	17.7

Juveniles

	Man./Sale: Opium or Cocaine	Man./Sale: Marijuana	Man./Sale: Synthetic Narcotic	Man./Sale: Nonnarcotic	Total Manufacture/ Sale Arrests	Possession: Opium or Cocaine	Possession: Marijuana	Possession: Synthetic Narcotic	Possession: Nonnarcotic	Total Possession Arrests	Total Drug Offense Arrests	% of Total Juvenile Arrests
1998	8	6	0	0	14	1	143	0	1	145	159	9.3
1997	9	7	0	0	16	3	196	0	0	199	215	10.4
1996	9	18	0	0	27	4	212	0	0	216	243	10.3
1995	7	21	0	0	28	4	283	0	1	288	316	12.8
1994	4	7	0	2	13	4	191	0	0	195	208	8.5
1993	1	13	0	3	17	1	165	0	2	168	185	7.6
1992	8	5	0	2	15	1	138	0	4	143	158	7.0
1991	4	6	0	0	10	7	122	0	5	134	144	5.8
1990	1	8	0	0	9	1	135	0	7	143	152	6.2
1989	4	5	0	0	9	2	129	0	0	131	140	6.7
1988	1	9	0	0	10	6	137	0	5	148	158	10.4
1987	1	3	0	0	4	2	184	0	1	187	191	12.4
1986	0	5	0	0	5	4	176	0	1	181	186	10.4
1985	3	3	0	2	8	4	195	0	4	203	211	15.4
1984	0	7	0	0	7	0	124	0	0	124	131	12.4
1983	0	3	0	0	3	0	80	0	0	80	83	9.2
1982	0	3	0	0	3	0	65	0	0	65	68	5.6

Drug Offense Arrests, Maui County, 1982-1998, Adults

	Man./Sale: Opium or Cocaine	Man./Sale: Marijuana	Man./Sale: Synthetic Narcotic	Man./Sale: Nonnarcotic	Total Manufacture/ Sale Arrests	Possession: Opium or Cocaine	Possession: Marijuana	Possession: Synthetic Narcotic	Possession: Nonnarcotic	Total Possession Arrests	Total Drug Offense Arrests	% of Total Adult Arrests
1998	22	27	15	0	64	50	134	151	4	339	403	7.2
1997	17	51	34	1	103	55	132	212	0	399	502	7.8
1996	25	34	38	2	99	54	83	142	3	282	381	7.6
1995	33	19	22	0	74	42	89	108	1	240	314	6.2
1994	10	30	12	0	52	42	155	66	2	265	317	6.0
1993	21	31	2	0	54	76	168	33	1	278	332	6.9
1992	22	21	0	0	43	192	162	5	0	359	402	8.7
1991	24	30	0	0	54	118	178	6	7	309	363	7.7
1990	38	29	0	0	67	114	58	2	9	183	250	6.4
1989	43	41	0	0	84	83	89	0	8	180	264	7.1
1988	7	23	0	0	30	59	105	3	5	172	202	6.4
1987	15	10	0	0	25	30	164	2	8	204	229	8.5
1986	8	11	0	0	19	26	143	7	1	177	196	6.1
1985	33	19	0	3	55	40	122	2	5	169	224	7.2
1984	11	11	0	0	22	27	181	0	6	214	236	7.5
1983	18	4	0	1	23	12	193	0	7	212	235	9.0
1982	18	7	0	0	25	8	126	0	3	137	162	7.1

Juveniles

	Man./Sale: Opium or Cocaine	Man./Sale: Marijuana	Man./Sale: Synthetic Narcotic	Man./Sale: Nonnarcotic	Total Manufacture/ Sale Arrests	Possession: Opium or Cocaine	Possession: Marijuana	Possession: Synthetic Narcotic	Possession: Nonnarcotic	Total Possession Arrests	Total Drug Offense Arrests	% of Total Juvenile Arrests
1998	0	9	1	0	10	1	126	7	2	136	146	14.0
1997	0	14	0	0	14	4	99	12	3	118	132	10.5
1996	0	1	0	0	1	2	120	11	0	133	134	9.9
1995	0	3	0	0	3	3	95	6	0	104	107	8.0
1994	0	2	0	0	2	2	89	1	0	92	94	6.8
1993	0	1	0	0	1	0	58	1	2	61	62	4.3
1992	1	3	0	0	4	1	56	0	0	57	61	4.6
1991	1	4	0	2	7	2	87	0	0	89	96	8.2
1990	0	4	0	0	4	0	39	0	5	44	48	4.1
1989	1	2	0	0	3	5	44	0	3	52	55	5.0
1988	2	0	0	1	3	0	56	0	1	57	60	4.6
1987	0	0	0	0	0	0	69	0	0	69	69	6.2
1986	0	2	0	0	2	3	72	0	0	75	77	7.7
1985	1	0	0	0	1	2	111	0	0	113	114	9.0
1984	0	1	0	3	4	3	98	0	2	103	107	10.8
1983	0	0	0	0	0	3	61	0	0	64	64	6.8
1982	0	6	0	0	6	0	88	0	1	89	95	9.0

Drug Offense Arrests, Kauai County, 1982-1998, Adults

	Man./Sale: Opium or Cocaine	Man./Sale: Marijuana	Man./Sale: Synthetic Narcotic	Man./Sale: Nonnarcotic	Total Manufacture/ Sale Arrests	Possession: Opium or Cocaine	Possession: Marijuana	Possession: Synthetic Narcotic	Possession: Nonnarcotic	Total Possession Arrests	Total Drug Offense Arrests	% of Total Adult Arrests
1998	0	3	0	0	3	24	31	51	0	106	109	3.6
1997	0	3	0	0	3	27	34	33	6	100	103	4.0
1996	0	1	0	0	1	38	42	13	0	93	94	4.1
1995	0	0	0	0	0	46	62	13	8	129	129	4.2
1994	3	5	0	1	9	66	43	3	6	118	127	4.4
1993	6	13	0	0	19	9	44	1	1	55	74	2.7
1992	14	16	0	0	30	2	19	0	0	21	51	2.1
1991	13	13	0	0	26	22	52	0	4	78	104	3.8
1990	26	14	0	0	40	35	56	1	0	92	132	4.9
1989	3	24	0	0	27	61	54	2	0	117	144	7.0
1988	0	36	0	0	36	32	47	0	0	79	115	5.9
1987	4	25	0	0	29	34	51	0	1	86	115	6.0
1986	1	10	0	0	11	48	95	0	3	146	157	8.8
1985	6	40	0	0	46	27	95	1	0	123	169	10.6
1984	3	2	0	0	5	24	69	0	0	93	98	6.3
1983	7	0	0	2	9	10	95	2	3	110	119	8.1
1982	0	0	0	0	0	15	68	0	0	83	83	6.0

Juveniles

	Man./Sale: Opium or Cocaine	Man./Sale: Marijuana	Man./Sale: Synthetic Narcotic	Man./Sale: Nonnarcotic	Total Manufacture/ Sale Arrests	Possession: Opium or Cocaine	Possession: Marijuana	Possession: Synthetic Narcotic	Possession: Nonnarcotic	Total Possession Arrests	Total Drug Offense Arrests	% of Total Juvenile Arrests
1998	0	0	0	0	0	0	75	1	0	76	76	6.0
1997	0	0	0	0	0	3	57	1	0	61	61	6.4
1996	0	0	0	0	0	0	49	0	0	49	49	3.4
1995	0	0	0	0	0	0	75	1	0	76	76	4.6
1994	0	2	0	0	2	0	40	0	1	41	43	2.4
1993	0	4	0	0	4	0	46	0	0	46	50	3.4
1992	0	1	0	0	1	0	19	0	0	19	20	1.8
1991	0	0	0	0	0	0	23	0	0	23	23	1.9
1990	0	1	1	0	2	0	28	4	0	32	34	2.2
1989	0	0	0	0	0	0	24	0	1	25	25	2.1
1988	0	0	0	0	0	0	33	0	6	39	39	2.8
1987	0	0	0	0	0	0	49	0	2	51	51	4.1
1986	0	0	0	3	3	2	36	0	0	38	41	3.1
1985	0	2	0	0	2	1	97	3	1	102	104	10.5
1984	0	0	0	0	0	0	76	5	0	81	81	8.6
1983	0	0	0	0	0	1	62	0	1	64	64	8.9
1982	0	0	0	0	0	1	41	0	0	42	42	6.6

Age and Sex of Adults Arrested for Drug Offenses

State of Hawaii, 1998

OFFENSE	SEX	18-24	25-29	30-34	35-39	40-44	45-49	50-54	55+	TOTAL	SEX %
MANU./SALE: OPIUM OR COCAINE	M	42	44	42	58	35	21	6	5	253	71.5
	F	25	18	19	10	7	7	9	6	101	28.5
MANU./SALE: MARIJUANA	M	25	11	13	16	12	12	6	3	98	76.0
	F	10	4	5	4	2	2	0	4	31	24.0
MANU./SALE: SYNTHETIC NARCOTIC	M	4	4	4	3	0	1	1	0	17	81.0
	F	2	1	1	0	0	0	0	0	4	19.0
MANU./SALE: NONNARCOTIC	M	4	10	15	5	8	5	0	0	47	68.1
	F	9	5	1	2	4	1	0	0	22	31.9
POSSESSION: OPIUM OR COCAINE	M	76	91	103	125	101	53	26	10	585	74.4
	F	37	41	32	47	20	14	8	2	201	25.6
POSSESSION: MARIJUANA	M	179	92	81	62	51	25	10	7	507	81.6
	F	33	25	17	15	11	7	4	2	114	18.4
POSSESSION: SYNTHETIC NARCOTIC	M	25	35	30	46	26	13	3	3	181	71.0
	F	16	15	14	15	13	1	0	0	74	29.0
POSSESSION: NONNARCOTIC	M	24	27	38	26	15	9	2	0	141	75.0
	F	10	13	11	3	2	5	3	0	47	25.0
ADULT DRUG OFFENSE ARRESTS	M	379	314	326	341	248	139	54	28	1,829	75.5
	F	142	122	100	96	59	37	24	14	594	24.5
AGE GROUP %		21.5	18.0	17.6	18.0	12.7	7.3	3.2	1.7	100.0	

Age and Sex of Juveniles Arrested for Drug Offenses

State of Hawaii, 1998

OFFENSE	SEX	0-9	10-12	13-14	15	16	17	TOTAL	SEX %
MANU./SALE: OPIUM OR COCAINE	M	0	0	2	2	0	2	6	55.6
	F	0	0	3	0	2	0	5	44.4
MANU./SALE: MARIJUANA	M	0	0	9	11	4	6	30	81.1
	F	0	1	4	1	1	0	7	18.9
MANU./SALE: SYNTHETIC NARCOTICS	M	0	0	0	0	0	1	1	50.0
	F	0	0	0	0	0	1	1	50.0
POSSESSION: OPIUM OR COCAINE	M	0	0	4	3	6	4	17	54.8
	F	0	0	1	2	8	3	14	45.2
POSSESSION: MARIJUANA	M	0	25	137	141	105	96	504	79.2
	F	0	6	48	31	35	12	132	20.8
POSSESSION: SYNTHETIC NARCOTIC	M	0	0	1	0	2	2	5	38.5
	F	0	0	2	3	2	1	8	61.5
POSSESSION: NONNARCOTIC	M	0	0	1	1	1	5	8	80.0
	F	0	0	0	0	0	2	2	20.0
JUVENILE DRUG OFFENSE ARRESTS	M	0	25	154	158	118	116	571	77.2
	F	0	7	58	37	48	19	169	22.8
AGE GROUP %		0.0	4.3	28.6	26.4	22.4	18.2	100.0	

Age Group percentages may not total 100.0 due to rounding.

**Race/Ethnicity of Adults Arrested for Drug Offenses
State of Hawaii, 1998**

OFFENSE (ROW %)	WHITE	BLACK	INDIAN	CHINESE	JAPANESE	FILIPINO	HAWAIIAN	KOREAN	SAMOAN	OTHER	TOTAL
MANU./SALE: OPIUM OR COCAINE	109 30.8	25 7.1	0	4 1.1	21 5.9	49 13.8	84 23.7	9 2.5	28 7.9	25 7.1	354 100.0
MANU./SALE: MARIJUANA	63 48.8	12 9.3	0	0	9 7.0	9 7.0	30 23.3	1 0.8	2 1.6	3 2.3	129 100.0
MANU./SALE: SYNTHETIC NARCOTIC	14 66.7	0	0	0	0	0	4 19.0	0	1 4.8	2 9.5	21 100.0
MANU./SALE: NONNARCOTIC	16 23.2	4 5.8	0	2 2.9	3 4.3	15 21.7	20 29.0	0	3 4.3	6 8.7	69 100.0
POSSESSION: OPIUM OR	263 33.5	73 9.3	0	11 1.4	48 6.1	74 9.4	145 18.4	20 2.5	55 7.0	97 12.3	786 100.0
POSSESSION: MARIJUANA	260	33	0	12	28	91	140	8	19	30	621
POSSESSION SYNTHETIC	71 27.8	2 0.8	0	1 0.4	22 8.6	74 29.0	65 25.5	2 0.8	2 0.8	16 6.3	255 100.0
POSSESSION: NONNARCOTIC	44	5	0	8	15	46	41	5	11	13	188
ADULT DRUG OFFENSE ARRESTS	840	154	0	38	146	358	529	45	121	192	2,423
RACE GROUP %	34.7	6.4	0.0	1.6	6.0	14.8	21.8	1.9	5.0	7.9	100.0

**Race/Ethnicity of Juveniles Arrested for Drug Offenses
State of Hawaii, 1998**

OFFENSE (ROW %)	WHITE	BLACK	INDIAN	CHINESE	JAPANESE	FILIPINO	HAWAIIAN	KOREAN	SAMOAN	OTHER	TOTAL
MANU./SALE: OPIUM OR COCAINE	4 36.4	0	0	0	0	2 18.2	4 36.4	0	1 9.1	0	11 100.0
MANU./SALE: MARIJUANA	8 21.6	1 2.7	0	0	5 13.5	9 24.3	9 24.3	0	2 5.4	3 8.1	37 100.0
MAN./S: SYNTHETIC NARCOTIC	0	0	0	0	0	1 50.0	1 50.0	0	0	0	2 100.0
POSSESSION: OPIUM OR COCAINE	1 3.2	0	0	0	1 3.2	3 9.7	17 54.8	0	2 6.5	7 22.6	31 100.0
POSSESSION: MARIJUANA	174 27.4	15 2.4	2 0.3	9 1.4	37 5.8	75 11.8	252 39.6	3 0.5	10 1.6	59 9.3	636 100.0
POSSESSION: SYNTHETIC NARCOTIC	4 30.8	0	0	0	1 7.7	3 23.1	4 30.8	0	0	1 7.7	13 100.0
POSSESSION: NONNARCOTIC	3 30.0	0	0	0	1 10.0	3 30.0	2 20.0	0	1 10.0	0	10 100.0
JUVENILE DRUG OFFENSE ARRESTS	194	16	2	9	45	96	289	3	16	70	740
RACE GROUP %	26.2	2.2	0.3	1.2	6.1	13.0	39.1	0.4	2.2	9.5	100.0

Row percentages may not add to 100.0 due to rounding.

Age and Sex of Adults Arrested for Drug Offenses, 1998

City and County of Honolulu

	18-24		25-29		30-34		35-39		40-44		45-49		50-54		55 +		Total	
	M	F	M	F	M	F	M	F	M	F	M	F	M	F	M	F	M	F
Man./Sale:Opium or cocaine	26	17	29	12	30	8	42	3	22	3	11	4	5	8	4	5	169	60
Man./Sale:Marijuana	9	2	4	1	4	0	2	1	3	0	2	1	2	0	0	0	26	5
Man./Sale:Syn.Narcotics	0	1	0	1	1	1	0	0	0	0	1	0	0	0	0	0	2	3
Man./Sale:Nonnarcotics	3	1	5	5	5	0	14	1	4	4	5	1	0	0	0	0	36	12
Possess.:Opium or Cocaine	61	34	76	37	85	27	109	42	85	17	34	11	22	6	8	2	480	176
Possess.:Marijuana	92	21	58	16	43	12	29	8	23	7	17	2	4	4	2	2	268	72
Possess.:Syn. Narcotics	5	3	6	2	6	1	8	3	4	8	4	0	1	0	2	0	36	17
Possess.:Nonnarcotics	21	9	23	12	35	9	23	3	12	2	9	5	2	3	0	0	125	43
Adult Drug Offense Arrests	217	88	201	86	209	58	227	61	153	41	83	24	36	21	16	9	1,142	388
	305		287		267		288		194		107		57		25		1,530	

Hawaii County

	18-24		25-29		30-34		35-39		40-44		45-49		50-54		55 +		Total	
	M	F	M	F	M	F	M	F	M	F	M	F	M	F	M	F	M	F
Man./Sale:Opium or Cocaine	14	7	13	6	10	9	14	5	9	3	8	2	1	1	0	1	69	34
Man./Sale:Marijuana	10	7	3	3	8	3	8	2	5	1	8	1	4	0	2	3	48	20
Man./Sale:Syn. Narcotics	0	0	0	0	0	0	0	0	0	0	0	0	1	0	0	0	1	0
Man./Sale:Nonnarcotics	1	8	5	0	0	1	1	1	4	0	0	0	0	0	0	0	11	10
Possess.:Opium or Cocaine	4	2	9	2	10	2	7	3	5	2	5	2	0	2	1	0	41	15
Possess.:Marijuana	38	5	11	3	12	1	14	5	13	2	3	3	4	0	2	0	97	19
Possess.:Syn. Narcotics	0	0	0	0	0	0	0	0	0	0	0	0	0	0	0	0	0	0
Possess.:Nonnarcotics	2	1	4	1	2	2	3	0	1	0	0	0	0	0	0	0	12	4
Adult Drug Offense Arrests	69	30	45	15	42	18	47	16	37	8	24	8	10	3	5	4	279	102
	99		60		60		63		45		32		13		9		381	

Maui County

	18-24		25-29		30-34		35-39		40-44		45-49		50-54		55 +		Total	
	M	F	M	F	M	F	M	F	M	F	M	F	M	F	M	F	M	F
Man./Sale:Opium or Cocaine	2	1	2	0	2	2	2	2	4	1	2	1	0	0	1	0	15	7
Man./Sale:Marijuana	6	1	4	0	1	1	5	1	3	1	2	0	0	0	1	1	22	5
Man./Sale:Syn.Narcotics	4	1	4	0	3	0	3	0	0	0	0	0	0	0	0	0	14	1
Man./Sale:Nonnarcotics	0	0	0	0	0	0	0	0	0	0	0	0	0	0	0	0	0	0
Possess.:Opium or Cocaine	6	0	4	1	4	3	7	0	10	1	12	0	1	0	1	0	45	5
Possess.:Marijuana	40	6	19	6	23	3	15	1	11	2	4	1	1	0	2	0	115	19
Possess.:Syn. Narcotics	14	6	22	9	20	11	32	8	16	2	8	1	1	0	1	0	114	37
Possess.:Nonnarcotics	1	0	0	0	1	0	0	0	2	0	0	0	0	0	0	0	4	0
Adult Drug Offense Arrests	73	15	55	16	54	20	64	12	46	7	28	3	3	0	6	1	329	74
	88		71		74		76		53		31		3		7		403	

Kauai County

	18-24		25-29		30-34		35-39		40-44		45-49		50-54		55 +		Total	
	M	F	M	F	M	F	M	F	M	F	M	F	M	F	M	F	M	F
Man./Sale:Opium or Cocaine	0	0	0	0	0	0	0	0	0	0	0	0	0	0	0	0	0	0
Man./Sale:Marijuana	0	0	0	0	0	1	1	0	1	0	0	0	0	0	0	0	2	1
Man./Sale:Syn. Narcotics	0	0	0	0	0	0	0	0	0	0	0	0	0	0	0	0	0	0
Man./Sale:Nonnarcotics	0	0	0	0	0	0	0	0	0	0	0	0	0	0	0	0	0	0
Possess.:Opium or Cocaine	5	1	2	1	4	0	2	2	1	0	2	1	3	0	0	0	19	5
Possess.:Marijuana	9	1	4	0	3	1	4	1	4	0	1	1	1	0	1	0	27	4
Possess.:Syn. Narcotics	6	7	7	4	4	2	6	4	6	3	1	0	1	0	0	0	31	20
Possess.:Nonnarcotics	0	0	0	0	0	0	0	0	0	0	0	0	0	0	0	0	0	0
Adult Drug Offense Arrests	20	9	13	5	11	4	13	7	12	3	4	2	5	0	1	0	79	30
	29		18		15		20		15		6		5		1		109	

Race/Ethnicity of Adults Arrested for Drug Offenses, 1998

City and County of Honolulu

	White	Black	Indian	Chinese	Japanese	Filipino	Hawaiian	Korean	Samoan	Other	Total
Man./Sale:Opium or Cocaine	51	23	0	2	20	35	46	9	27	16	229
Man./Sale:Marijuana	9	7	0	0	3	0	8	0	2	2	31
Man./Sale:Syn. Narcotics	4	0	0	0	0	0	0	0	0	1	5
Man./Sale:Nonnarcotics	12	4	0	2	2	12	9	0	2	5	48
Possession:Opium or Cocaine	186	68	0	10	42	64	121	20	55	90	656
Possession:Marijuana	97	26	0	12	21	64	73	6	14	27	340
Possession:Syn. Narcotics	13	1	0	1	9	10	12	2	1	4	53
Possession:Nonnarcotics	34	4	0	8	14	44	36	5	10	13	168
Adult Drug Offense Arrests	406	133	0	35	111	229	305	42	111	158	1,530

Hawaii County

	White	Black	Indian	Chinese	Japanese	Filipino	Hawaiian	Korean	Samoan	Other	Total
Man./Sale:Opium or Cocaine	47	2	0	1	0	11	32	0	1	9	103
Man./Sale:Marijuana	36	3	0	0	6	4	18	1	0	0	68
Man./Syn. Narcotics	1	0	0	0	0	0	0	0	0	0	1
Man./Nonnarcotics	4	0	0	0	1	3	11	0	1	1	21
Possession:Opium or Cocaine	30	4	0	0	1	4	16	0	0	1	56
Possession:Marijuana	53	1	0	0	3	13	43	0	2	1	116
Possession:Syn. Narcotics	0	0	0	0	0	0	0	0	0	0	0
Possession:Nonnarcotics	7	1	0	0	1	1	5	0	1	0	16
Adult Drug Offense Arrests	178	11	0	1	12	36	125	1	5	12	381

Maui County

	White	Black	Indian	Chinese	Japanese	Filipino	Hawaiian	Korean	Samoan	Other	Total
Man./Sale:Opium or Cocaine	11	0	0	1	1	3	6	0	0	0	22
Man./Sale:Marijuana	17	2	0	0	0	3	4	0	0	1	27
Man./Sale:Syn. Narcotics	9	0	0	0	0	0	4	0	1	1	15
Man./Sale:Nonnarcotics	0	0	0	0	0	0	0	0	0	0	0
Possession:Opium or Cocaine	35	0	0	1	4	2	7	0	0	1	50
Possession:Marijuana	91	4	0	0	3	9	21	2	3	1	134
Possession:Syn. Narcotics	41	1	0	0	10	52	43	0	1	3	151
Possession:Nonnarcotics	3	0	0	0	0	1	0	0	0	0	4
Adult Drug Offense Arrests	207	7	0	2	18	70	85	2	5	7	403

Kauai County

	White	Black	Indian	Chinese	Japanese	Filipino	Hawaiian	Korean	Samoan	Other	Total
Man./Sale:Opium or Cocaine	0	0	0	0	0	0	0	0	0	0	0
Man./Sale:Marijuana	1	0	0	0	0	2	0	0	0	0	3
Man./Sale:Syn. Narcotics	0	0	0	0	0	0	0	0	0	0	0
Man./Sale:Nonnarcotics	0	0	0	0	0	0	0	0	0	0	0
Possession:Opium or Cocaine	12	1	0	0	1	4	1	0	0	5	24
Possession:Marijuana	19	2	0	0	1	5	3	0	0	1	31
Possession:Syn. Narcotics	17	0	0	0	3	12	10	0	0	9	51
Possession:Nonnarcotics	0	0	0	0	0	0	0	0	0	0	0
Adult Drug Offense Arrests	49	3	0	0	5	23	14	0	0	15	109

Age and Sex of Juveniles Arrested for Drug Offenses, 1998

City and County of Honolulu

	0-9		10-12		13-14		15		16		17		Total	
	M	F	M	F	M	F	M	F	M	F	M	F	M	F
Man./Sale:Opium or Cocaine	0	0	0	0	1	1	1	0	0	0	0	0	2	1
Man./Sale:Marijuana	0	0	0	0	4	3	7	1	3	0	4	0	18	4
Man./Sale:Syn. Narcotics	0	0	0	0	0	0	0	0	0	0	0	1	0	1
Man./Sale:Nonnarcotics	0	0	0	0	0	0	0	0	0	0	0	0	0	0
Possess.:Opium or Cocaine	0	0	0	0	4	1	3	2	6	6	4	3	17	12
Possess.:Marijuana	0	0	10	2	64	14	69	19	55	9	45	5	243	49
Possess.:Syn. Narcotics	0	0	0	0	1	0	0	0	2	1	1	0	4	1
Possess.:Nonnarcotics	0	0	0	0	0	0	0	0	4	0	1	2	5	2
Juvenile Drug Offense Arrests	0	0	10	2	74	19	80	22	70	16	55	11	289	70
	0		12		93		102		86		66		359	

Hawaii County

	0-9		10-12		13-14		15		16		17		Total	
	M	F	M	F	M	F	M	F	M	F	M	F	M	F
Man./Sale:Opium or Cocaine	0	0	0	0	1	2	1	0	0	2	2	0	4	4
Man./Sale:Marijuana	0	0	0	0	1	0	3	0	0	1	1	0	5	1
Man./Sale:Syn. Narcotics	0	0	0	0	0	0	0	0	0	0	0	0	0	0
Man./Sale:Nonnarcotics	0	0	0	0	0	0	0	0	0	0	0	0	0	0
Possess.:Opium or Cocaine	0	0	0	0	0	0	0	0	0	1	0	0	0	1
Possess.:Marijuana	0	0	7	3	34	19	29	3	19	11	15	3	104	39
Possess.:Syn. Narcotics	0	0	0	0	0	0	0	0	0	0	0	0	0	0
Possess.:Nonnarcotics	0	0	0	0	0	0	1	0	0	0	0	0	1	0
Juvenile Drug Offense Arrests	0	0	7	3	36	21	34	3	19	15	18	3	114	45
	0		10		57		37		34		21		159	

Maui County

	0-9		10-12		13-14		15		16		17		Total	
	M	F	M	F	M	F	M	F	M	F	M	F	M	F
Man./Sale:Opium or Cocaine	0	0	0	0	0	0	0	0	0	0	0	0	0	0
Man./Sale:Marijuana	0	0	0	1	4	1	1	0	1	0	1	0	7	2
Man./Sale:Syn. Narcotics	0	0	0	0	0	0	0	0	0	0	1	0	1	0
Man./Sale:Nonnarcotics	0	0	0	0	0	0	0	0	0	0	0	0	0	0
Possess.:Opium or Cocaine	0	0	0	0	0	0	0	0	0	1	0	0	0	1
Possess.:Marijuana	0	0	7	0	15	12	31	5	23	10	21	2	97	29
Possess.:Syn. Narcotics	0	0	0	0	0	2	0	3	0	0	1	1	1	6
Possess.:Nonnarcotics	0	0	0	0	1	0	0	0	0	0	1	0	2	0
Juvenile Drug Offense Arrests	0	0	7	1	20	15	32	8	24	11	25	3	108	38
	0		8		35		40		35		28		146	

Kauai County

	0-9		10-12		13-14		15		16		17		Total	
	M	F	M	F	M	F	M	F	M	F	M	F	M	F
Man./Sale:Opium or Cocaine	0	0	0	0	0	0	0	0	0	0	0	0	0	0
Man./Sale:Marijuana	0	0	0	0	0	0	0	0	0	0	0	0	0	0
Man./Sale:Syn. Narcotics	0	0	0	0	0	0	0	0	0	0	0	0	0	0
Man./Sale:Nonnarcotics	0	0	0	0	0	0	0	0	0	0	0	0	0	0
Possession:Opium or Cocaine	0	0	0	0	0	0	0	0	0	0	0	0	0	0
Possess.:Marijuana	0	0	1	1	24	3	12	4	8	5	15	2	60	15
Possess.:Syn. Narcotics	0	0	0	0	0	0	0	0	0	1	0	0	0	1
Possess.:Nonnarcotics	0	0	0	0	0	0	0	0	0	0	0	0	0	0
Juvenile Drug Offense Arrests	0	0	1	1	24	3	12	4	8	6	15	2	60	16
	0		2		27		16		14		17		76	

Race/Ethnicity of Juveniles Arrested for Drug Offenses, 1998

City and County of Honolulu

	White	Black	Indian	Chinese	Japanese	Filipino	Hawaiian	Korean	Samoan	Other	Total
Man./Sale:Opium or Cocaine	1	0	0	0	0	0	1	0	1	0	3
Man./Sale:Marijuana	1	1	0	0	4	5	6	0	2	3	22
Man./Sale:Syn. Narcotics	0	0	0	0	0	1	0	0	0	0	1
Man./Sale:Nonnarcotics	0	0	0	0	0	0	0	0	0	0	0
Possession:Opium or Cocaine	0	0	0	0	1	3	16	0	2	7	29
Possession:Marijuana	42	5	1	7	18	21	139	3	9	47	292
Possession:Syn. Narcotics	1	0	0	0	0	1	2	0	0	1	5
Possession:Nonnarcotics	2	0	0	0	1	2	1	0	1	0	7
Juvenile Drug Offense Arrests	47	6	1	7	24	33	165	3	15	58	359

Hawaii County

	White	Black	Indian	Chinese	Japanese	Filipino	Hawaiian	Korean	Samoan	Other	Total
Man./Sale:Opium or Cocaine	3	0	0	0	0	2	3	0	0	0	8
Man./Sale:Marijuana	4	0	0	0	0	0	2	0	0	0	6
Man./Sale Syn. Narcotics	0	0	0	0	0	0	0	0	0	0	0
Man./Sale Nonnarcotics	0	0	0	0	0	0	0	0	0	0	0
Possession:Opium or Cocaine	0	0	0	0	0	0	1	0	0	0	1
Possession:Marijuana	56	6	0	2	4	14	54	0	0	7	143
Possession:Syn. Narcotics	0	0	0	0	0	0	0	0	0	0	0
Possession:Nonnarcotics	1	0	0	0	0	0	0	0	0	0	1
Juvenile Drug Offense Arrests	64	6	0	2	4	16	60	0	0	7	159

Maui County

	White	Black	Indian	Chinese	Japanese	Filipino	Hawaiian	Korean	Samoan	Other	Total
Man./Sale:Opium or Cocaine	0	0	0	0	0	0	0	0	0	0	0
Man./Sale:Marijuana	3	0	0	0	1	4	1	0	0	0	9
Man./Sale:Syn. Narcotics	0	0	0	0	0	0	1	0	0	0	1
Man./Sale:Nonnarcotics	0	0	0	0	0	0	0	0	0	0	0
Possession:Opium or Cocaine	1	0	0	0	0	0	0	0	0	0	1
Possession:Marijuana	46	4	1	0	3	27	40	0	1	4	126
Possession:Syn. Narcotics	3	0	0	0	0	2	2	0	0	0	7
Possession:Nonnarcotics	0	0	0	0	0	1	1	0	0	0	2
Juvenile Drug Offense Arrests	53	4	1	0	4	34	45	0	1	4	146

Kauai County

	White	Black	Indian	Chinese	Japanese	Filipino	Hawaiian	Korean	Samoan	Other	Total
Man./Sale:Opium or Cocaine	0	0	0	0	0	0	0	0	0	0	0
Man./Sale:Marijuana	0	0	0	0	0	0	0	0	0	0	0
Man./Sale:Syn. Narcotics	0	0	0	0	0	0	0	0	0	0	0
Man./Sale:Nonnarcotics	0	0	0	0	0	0	0	0	0	0	0
Possession:Opium or Cocaine	0	0	0	0	0	0	0	0	0	0	0
Possession:Marijuana	30	0	0	0	12	13	19	0	0	1	75
Possession:Synthetic Narcotics	0	0	0	0	1	0	0	0	0	0	1
Possession:Nonnarcotics	0	0	0	0	0	0	0	0	0	0	0
Juvenile Drug Offense Arrests	30	0	0	0	13	13	19	0	0	1	76

In accordance with the Americans with Disabilities Act, P.L. 101-336, this material is available in an altered format, upon request. If you require an altered format, please call the Department of the Attorney General, Crime Prevention and Justice Assistance Division at (808) 586-1150. TDD: Oahu, 586-1298; neighbor islands, 1-877-586-1298.

Crime Prevention & Justice Assistance Division
Department of the Attorney General
235 S. Beretania Sreet, Suite 401
Honolulu, Hawaii 96813