

Maps of Waipahu

The following set of maps and tables focus on the area known as Waipahu. Waipahu is a community located near Pearl Harbor on Oahu, in the jurisdiction of the City and County of Honolulu. There are 35 neighborhood board districts on Oahu, of which Waipahu is one. All of the maps in this section are dot density maps that show the spatial distribution of offense locations. The shapes and colors of the dots have been varied to show different offense and arrestee characteristics. The base maps also vary, showing topography, land use, or demographic features of the landscape.

The Waipahu neighborhood board district maps are organized into two sets. The first set plots offenses *that took place in Waipahu* for which Waipahu residents and non-residents alike were arrested, juxtaposed over different types of base maps. The second set plots the characteristics of offenses and arrestees among youth *who reside in Waipahu*. In other words, the first set contains points selected by offense location within the catchment area, that is, those offenses that took place within the Waipahu neighborhood board district, regardless of whether or not the arrestee was a Waipahu resident. In contrast, the second set contains points selected by geographic residence of arrestee, that is, those offenses for which a juvenile living in Waipahu was arrested. Making the distinction between the spatial distribution of offenses by Waipahu residents and non-Waipahu juveniles is often helpful to those planning youth development and intervention activities.

In 2001, there were 354 Waipahu residents who were arrested for 616 juvenile offenses. A small percentage was arrested multiple times, raising the average number of offenses per arrestee to 1.74. Waipahu juveniles had a slightly higher per capita number of juvenile arrestees than Oahu overall, with 21 Waipahu juvenile arrestees for every 1,000 Waipahu juveniles under the age of 18, as compared to 19 Oahu juvenile arrestees for every 1,000 juveniles on the island of Oahu. The per capita number of young female arrestees in Waipahu was equal to the per capita number of young female arrestees on Oahu (17 per 1,000 female juveniles). Males in Waipahu had a slightly higher per capita number of arrestees (24 per 1,000 male juveniles) as compared to male youth overall on Oahu (22 per 1,000 male juveniles). The table below compares the number of arrestees per capita for Waipahu and Oahu.

Table 10:
Juvenile offenders per capita in Waipahu and Oahu by gender

Gender	Waipahu				Oahu			
	Number of juvenile offenders	Number of juveniles under 18	Per Capita (1,000)	Percentage of Oahu juvenile offenders	Number of juvenile offenders	Number of juveniles	Per capita (1,000)	Percentage of total juveniles
Male	213	8,875	24	9.2	2,325	107,378	22	2.2
Female	141	8,382	17	8.2	1,710	101,377	17	1.7
Total	354	17,257	21	8.8	4,035	208,755	19	1.9

Note: Includes juveniles residing in Waipahu regardless of offense locations

Sources: Department of the Attorney General, Juvenile Justice Information System, 2001
U.S. Census Bureau, Census 2000 Summary File 2

Offense locations comparing Waipahu and non-Waipahu juveniles

This first set of maps shows the offense characteristics of Waipahu juveniles arrested for island-wide offenses as compared to non-Waipahu juveniles arrested for offenses in Waipahu, by type of offense. While there were 616 offenses for which Waipahu juveniles were arrested island-wide, 399 of these occurred within Waipahu. Within Waipahu, there were a total of 497 offenses, including 98 offenses for which non-Waipahu juveniles were arrested. The first two maps, both entitled **Offense Locations for Waipahu Juveniles and Non-Waipahu Juveniles**, show the offense locations at the Waipahu and island scales, respectively. The island-wide map uses solid and hollow dots to differentiate offenses by Waipahu and non-Waipahu juveniles. All of the maps at the Waipahu scale use unique symbols to differentiate the type of offense for which an arrest was made. These maps use a topographical image as the base map.

The following three maps use the same dot density crime theme featuring crime type juxtaposed on different base maps. The map entitled **Offense Locations for Waipahu Juveniles and Non-Waipahu Juveniles by Offense Type over Land Uses** overlays the location of offenses by crime type (excluding status offenses) on a land use map maintained by the City and County of Honolulu. As one can observe, many of the non status offenses occurred along the commercial corridor of Farrington Highway. **Offense Locations for Waipahu Juveniles and Non-Waipahu Juveniles by Offense Type over Poverty** juxtaposes offense locations over shaded areas indicating different rates of poverty according to the 2000 U.S. Census. The darker the shade, the greater is the percentage of those living below the federally stated poverty level. Many other socioeconomic and demographic measures from the Census can be used as base maps. For example, the **Offense Locations for Waipahu Juveniles and Non-Waipahu Juveniles by Offense Type (including status offense) over Ethnic Concentration** map uses demographic information to show the concentration of those who identified themselves as full or part Asian in the 2000 Census. The darker the shade, the greater is the percentage of Asians living in those areas. Since status offenses accounted for over 60 percent of all offenses in Waipahu, an additional map was created excluding all status offenses, entitled **Offense Locations for Waipahu Juveniles and Non-Waipahu Juveniles by Offense Type (excluding status offenses) over Ethnic Concentration**. In this map, the shaded areas indicate varying proportions of those who identified themselves as Hawaiian or Pacific Islander.

Offense locations for Waipahu juveniles

This second set of dot density maps plots the distribution of juvenile offenses for which a Waipahu resident was arrested. Map themes describe various offense and arrestee characteristics. The two maps entitled **Offense Locations for Waipahu Juveniles by Age** use color-coded dots to display the age of the arrestee and the offense location. The first of these shows the entire island of Oahu, while the second zooms to Waipahu. Over half (54 percent) of the arrests were for status offenses.

Below the Waipahu scale map is a similar map that uses different icons to show the primary ethnicity of the arrestee for that offense, using the first of five ethnicity fields. This map is titled **Offense Locations for Waipahu Juveniles by Primary Ethnicity**. There are many variations of ethnicity maps that can be created depending upon the purpose of the inquiry. For example, to view the crime characteristics for a specific ethnic group, one could map the location and types of offenses for arrestees identified only with that particular group.

An example of a more specific map showing the distribution of offense types among a select population is the map of offenses by gender. The map entitled **Offense Locations for Waipahu Juveniles by Gender** shows island-wide offense locations with points color-coded to distinguish males and females. Two maps were created at the Waipahu scale for males and females, respectively, entitled **Offense Locations for Waipahu Male Juveniles by Offense Type** and **Offense Locations for Waipahu Female Juveniles by Offense Type**. By isolating male and female arrests on separate maps, one can more clearly view the pattern of offense types.

As previously mentioned, 332 of the 616 offenses (54 percent) among Waipahu juveniles were status offenses. And of the 332 status offenses, 254 offenses (77 percent) were runaways. In fact, runaways accounted for 41 percent of all offenses among Waipahu juveniles. Given this high proportion, several maps were made highlighting runaway offenses. The first, entitled **Runaway Offense Locations for Waipahu Juveniles**, shows the location of Waipahu runaway offenses across the island. Among runaways, 204 juveniles (80 percent) remained in Waipahu, while 50 (20 percent) were arrested outside of Waipahu. The second map, entitled **Approximate Locations of Waipahu Juvenile Runaway Offender's Residence and Offense Locations**, compares the residential locations and offense locations among runaway juveniles. In the case of runaway offenses, the offense location is also the arrest location. This map uses a solid dot to indicate the approximate locations of offenders' residences and a hollow dot to indicate the offense locations. Increases in the diameter of the hollow dots indicate increases in the number of offenses at that location. It is possible that more than one youth in a household may have been arrested for a runaway offense at a particular location. In an interactive mode, one can highlight and select clusters of dots and display the information about those points contained in the selected records for further examination.

Truancies were not as frequent as runaways and accounted for 53 of the 332 status offenses (16 percent). Of the 53 truancies for which a Waipahu resident was arrested, 39 arrests were made within Waipahu. These are shown on the map entitled **Truancy Offense Locations for Waipahu Juveniles**. Buffers were drawn around the public schools in Waipahu and were used to generate summary counts of offenses within .25 and .5 mile radii around each campus. These counts are shown in Table 11. Further analysis could be conducted on those offenses occurring within close proximity of schools.

Maps were also created to show the location of offenses for which Waipahu juveniles were arrested more than once in 2001. **Offense Locations for Repeat Offenders Living in Waipahu** shows an island-wide view of these offenses with symbols indicating the various offense types. The following map of the same title zooms to Waipahu. There is often interest in the location of drug offenses among youth in a community and the proximity of these offenses to schools. These are shown on the map entitled **Drug Offense Locations for Waipahu Juveniles**. The diameter of the dots varies to indicate the number of offenses at one location; the hollow and solid dots indicate the type of drug offenses, that is, petty misdemeanor or felony offenses, respectively.

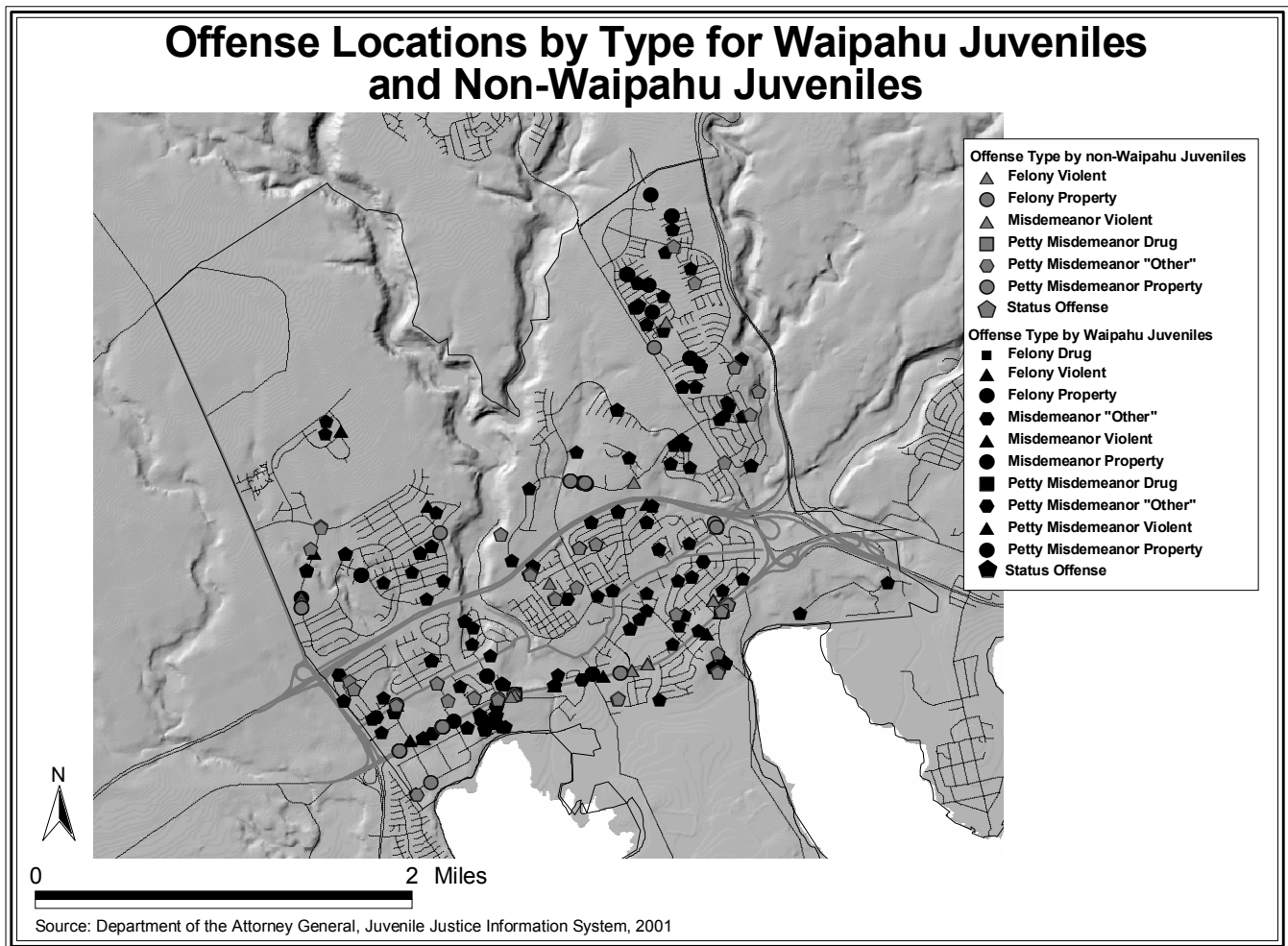
The final map plots the location of juvenile-related resources in Waipahu. The map includes over 75 agencies and community organizations. They are grouped by resource type and are indicated on the map by unique symbols and text labels. Maps such as these are extremely useful in developing collaborative solutions that draw upon local knowledge and collective resources.

Finally, tables were created that summarize the numeric values represented in the thematic maps. This final section includes the following tables:

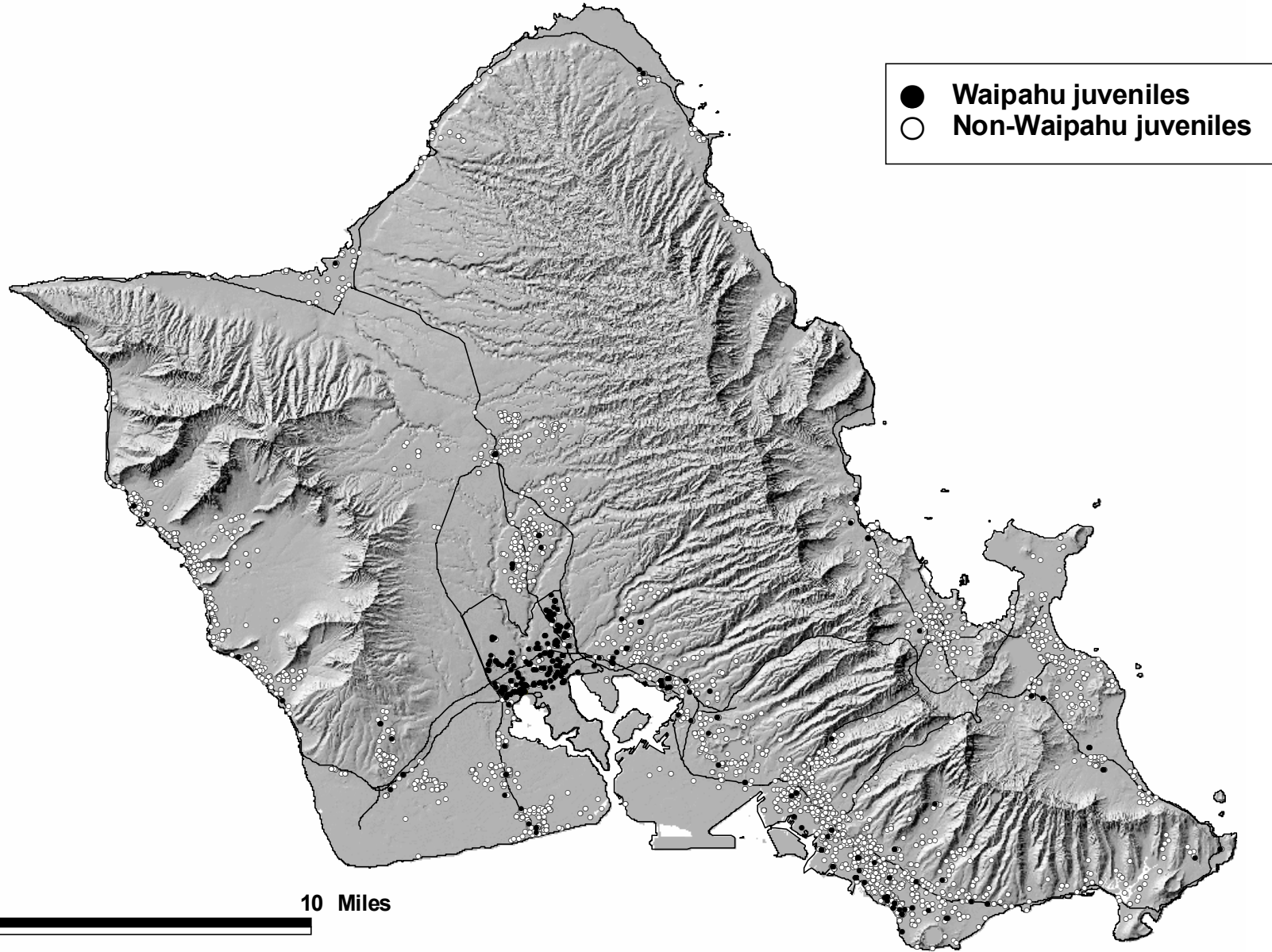
- Table 11: Offenses inside and outside of Waipahu for Waipahu juveniles and non-Waipahu juveniles
- Table 12: Offenses inside and outside of Waipahu for Waipahu juveniles and non-Waipahu juveniles by gender
- Table 13: Offenses for Waipahu juveniles by type and age
- Table 14: Waipahu juvenile arrestees by age
- Table 15: Waipahu juvenile arrestees by primary ethnicity
- Table 16: Offenses for Waipahu juveniles by type and primary ethnicity
- Table 17: Offenses for Waipahu juveniles by type and gender
- Table 18: Waipahu juvenile arrestees by gender
- Table 19: Status offenses inside and outside of Waipahu for Waipahu juveniles and non-Waipahu juveniles
- Table 20: Status offenses for Waipahu juveniles by age
- Table 21: Status offenses for Waipahu juveniles by gender
- Table 22: Status offenses for Waipahu juveniles by primary ethnicity
- Table 23: Truancy offenses for Waipahu juveniles within .25 and .5 mile of public schools
- Table 24: Repeat offenses inside and outside of Waipahu for Waipahu juveniles and non-Waipahu juveniles
- Table 25: Repeat offenses for Waipahu juveniles by age
- Table 26: Waipahu juvenile repeat offender arrestees by age
- Table 27: Repeat offenses for Waipahu juveniles by gender
- Table 28: Repeat offenses for Waipahu juveniles by primary ethnicity
- Table 29: Drug offenses for Waipahu juveniles by age
- Table 30: Drug offenses inside and outside of Waipahu for Waipahu juveniles and non-Waipahu juveniles
- Table 31: Drug offenses for Waipahu juveniles by gender
- Table 32: Drug offenses for Waipahu juveniles by primary ethnicity

Selected Maps and Tables

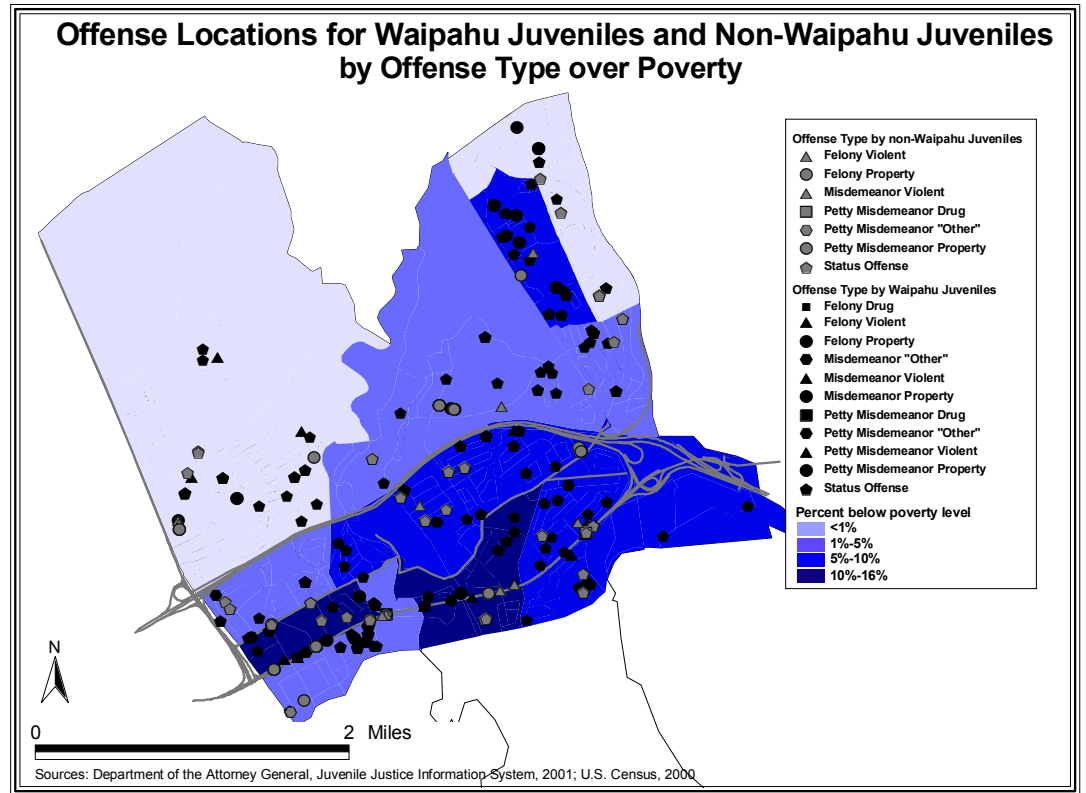
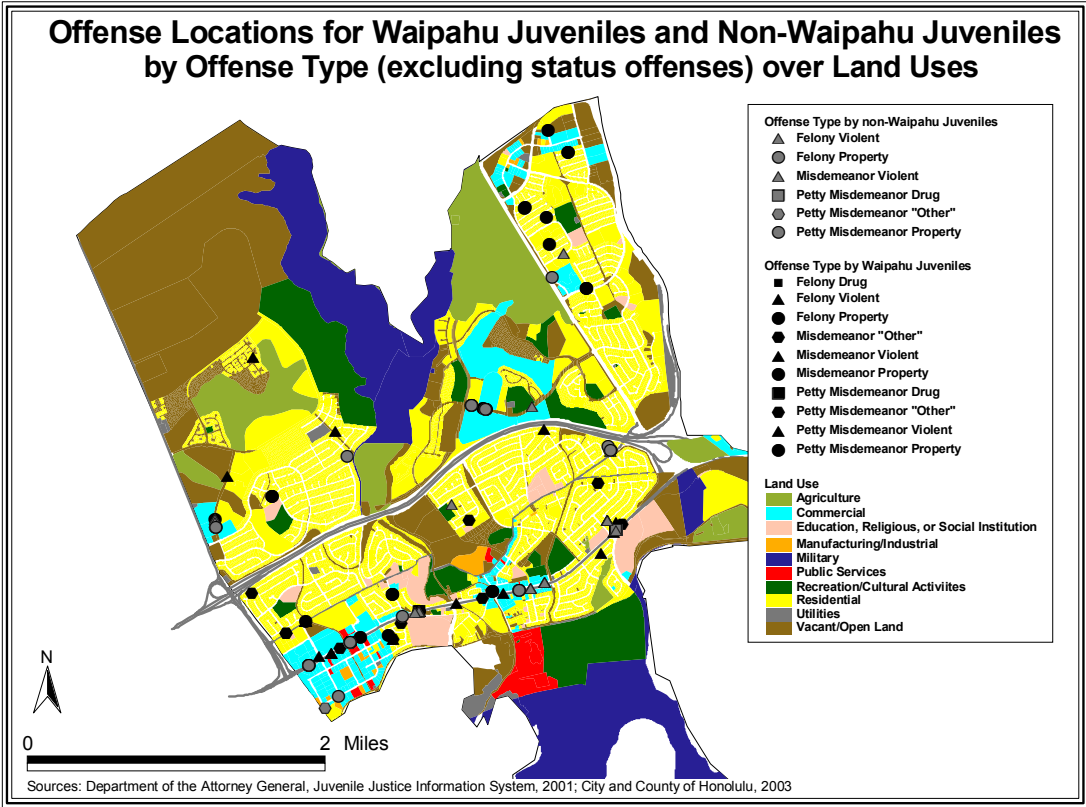
The following selected maps of Waipahu correspond to the previous narrative. There are many more maps that can be created with the available data. This set of maps highlights some of the possible combinations of themes along with the range of map types using data from the JJIS. Tables provide the quantitative data represented in the maps.

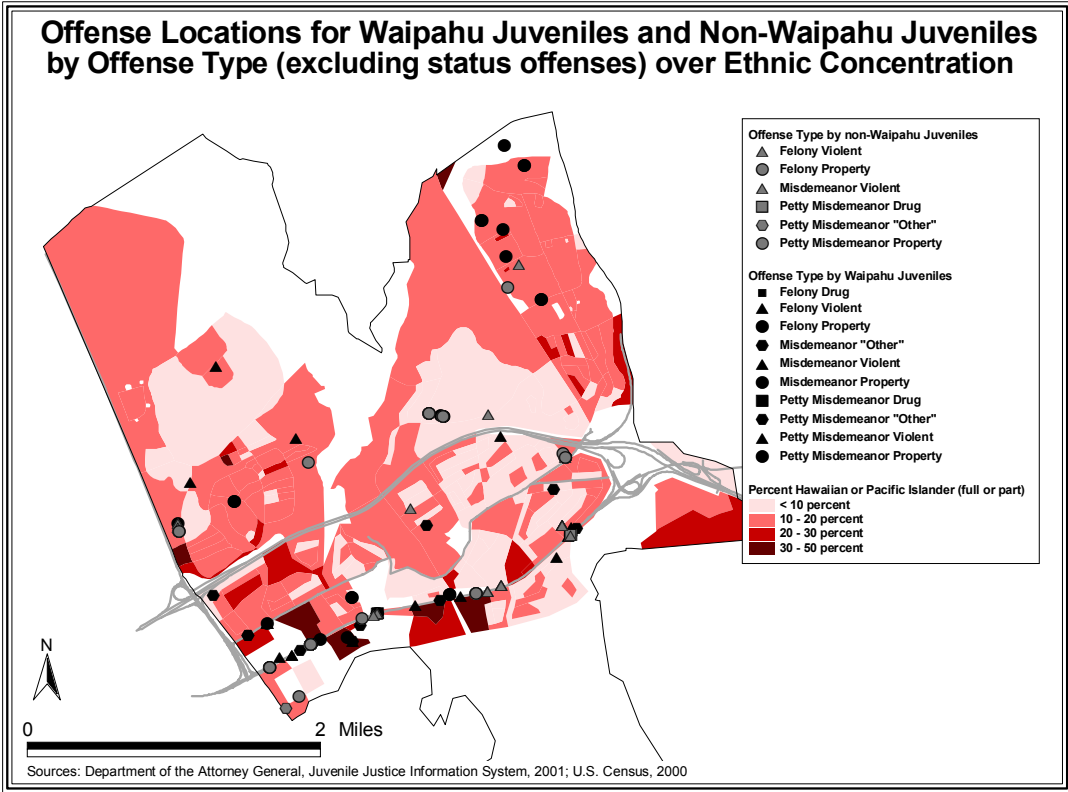
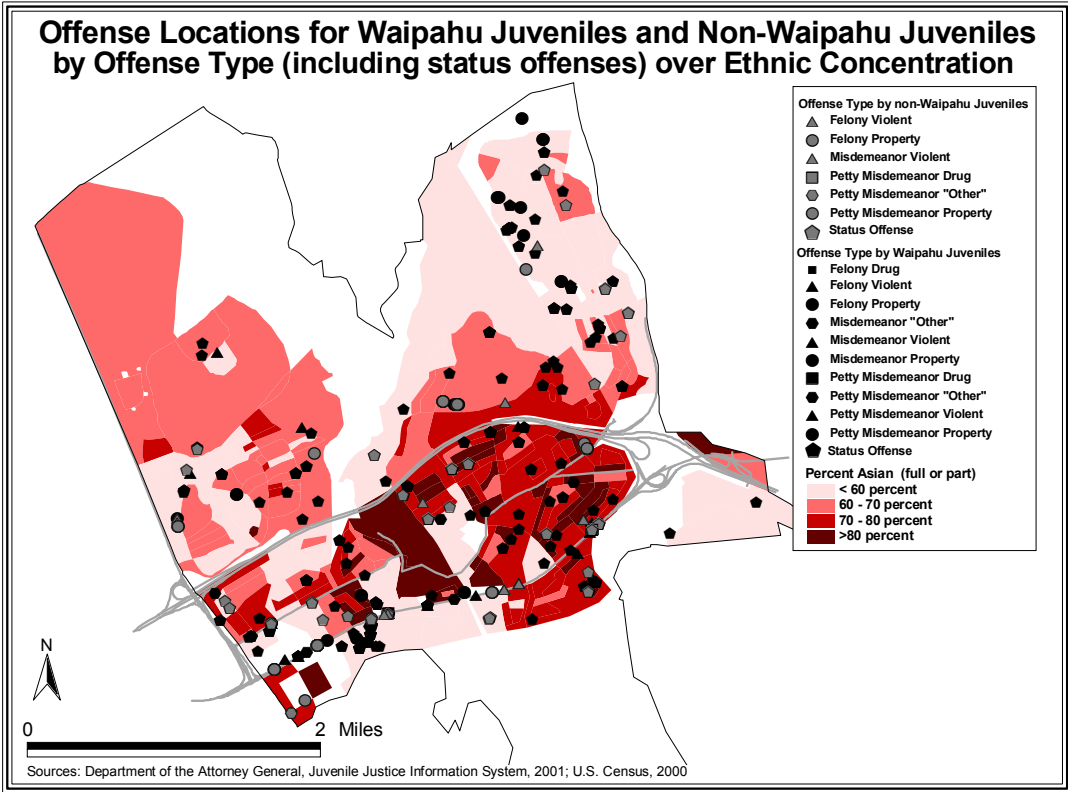


Offense Locations for Waipahu Juveniles and Non-Waipahu Juveniles

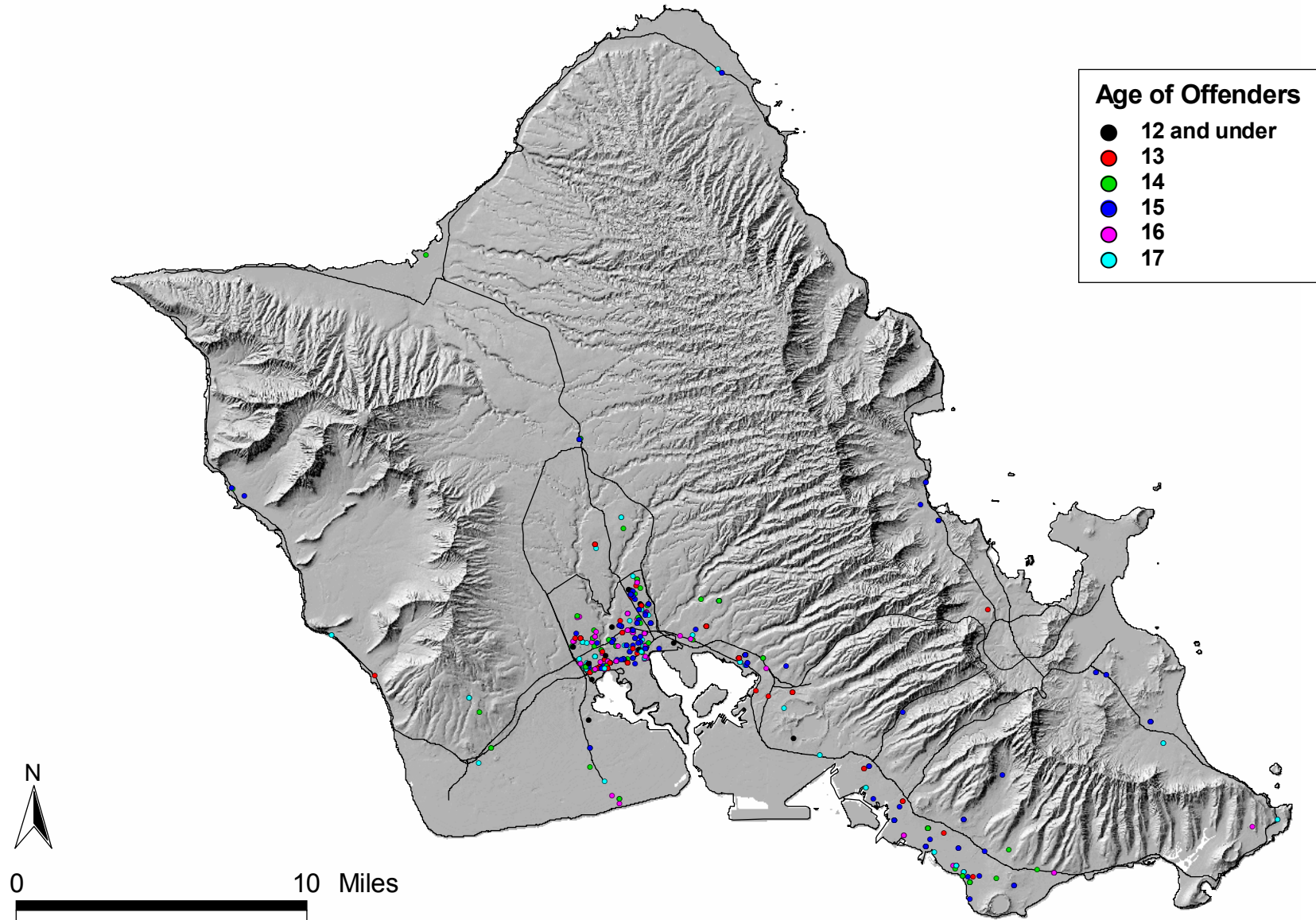


Source: Department of the Attorney General, Juvenile Justice Information System, 2001



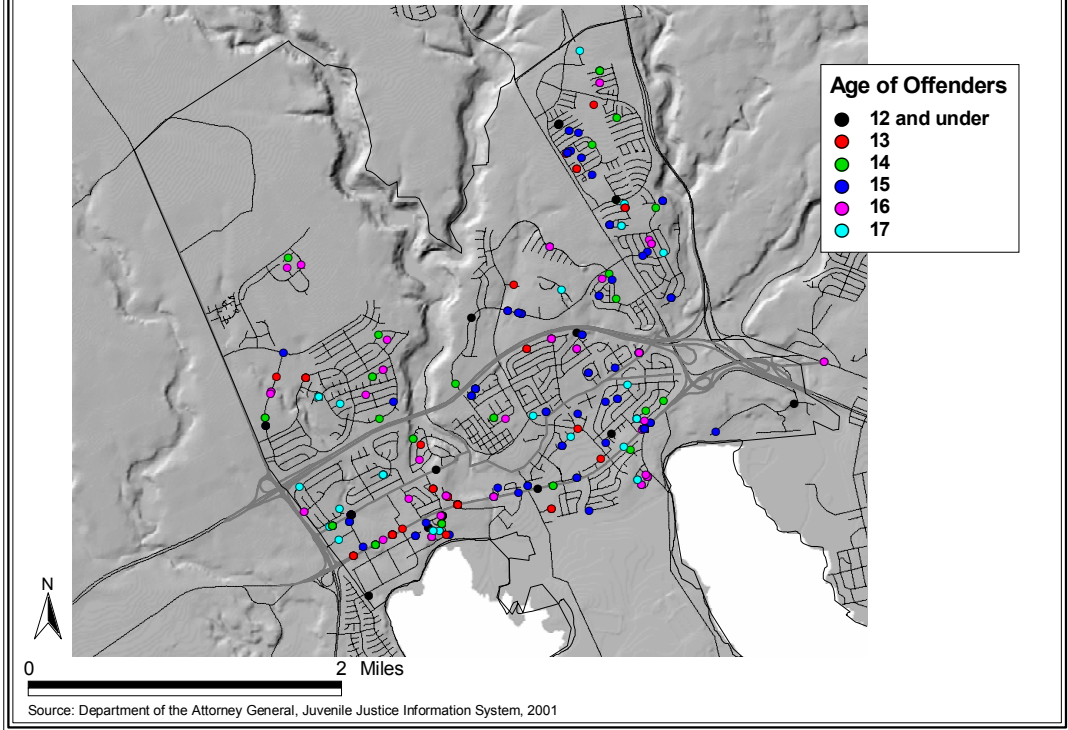


Offense Locations for Waipahu Juveniles by Age

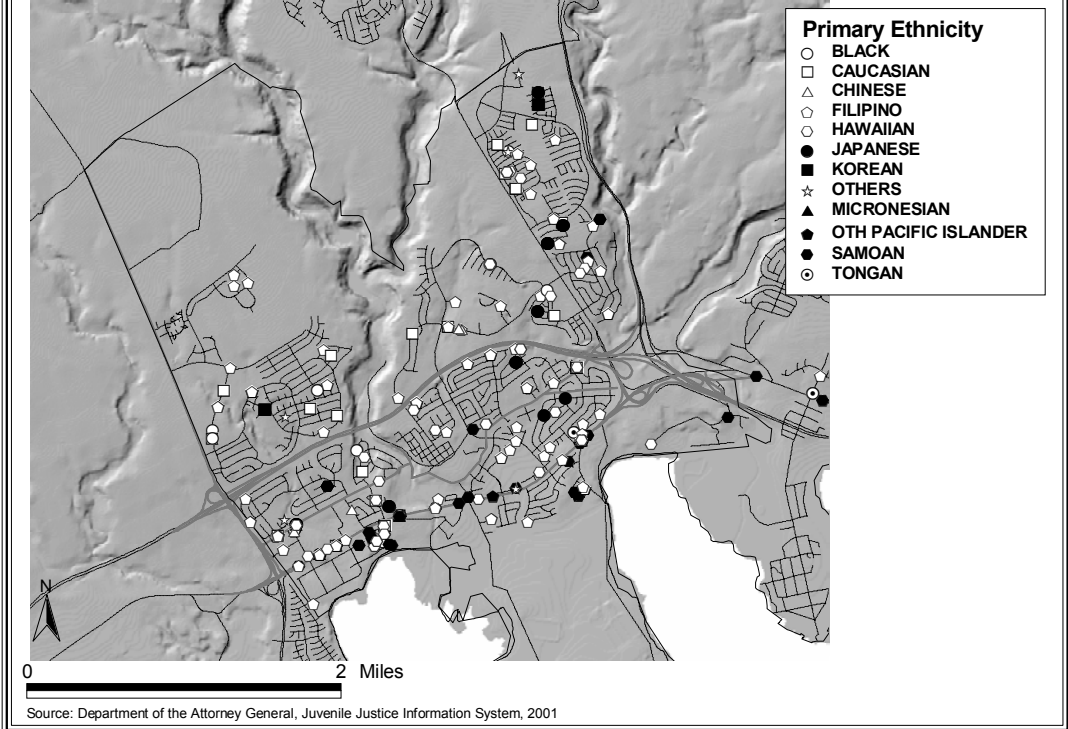


Source: Department of the Attorney General, Juvenile Justice Information System, 2001

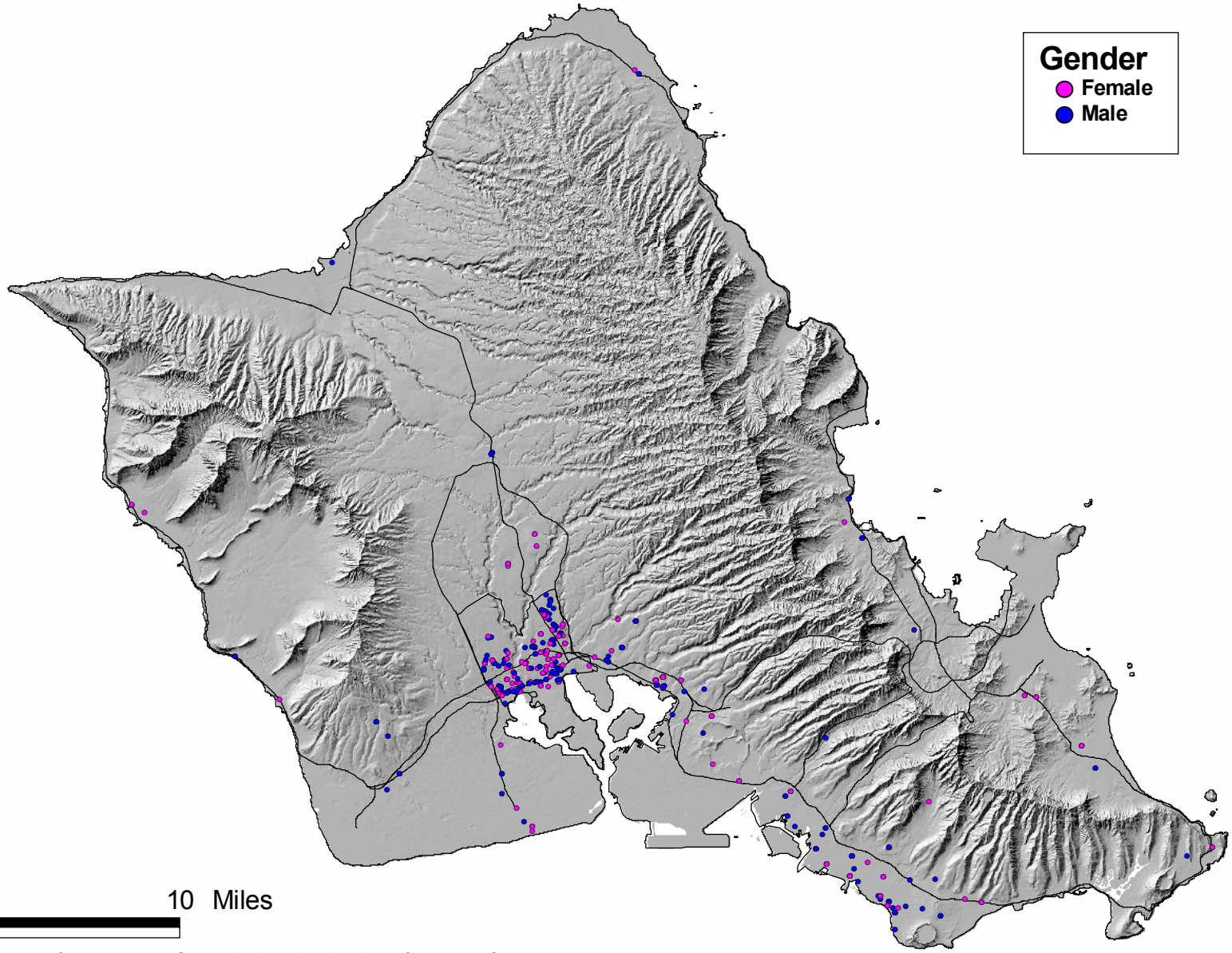
Offense Locations for Waipahu Juveniles by Age



Offense Locations for Waipahu Juveniles by Primary Ethnicity



Offense Locations for Waipahu Juveniles by Gender

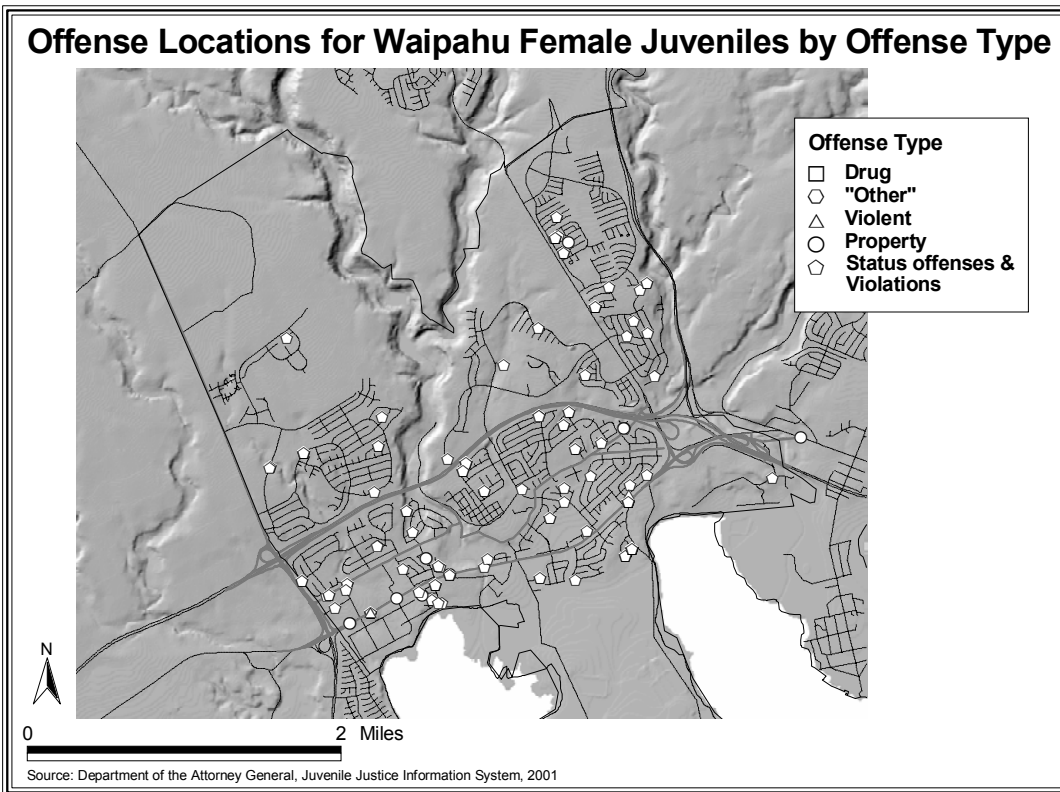


Source: Department of the Attorney General, Juvenile Justice Information System, 2001

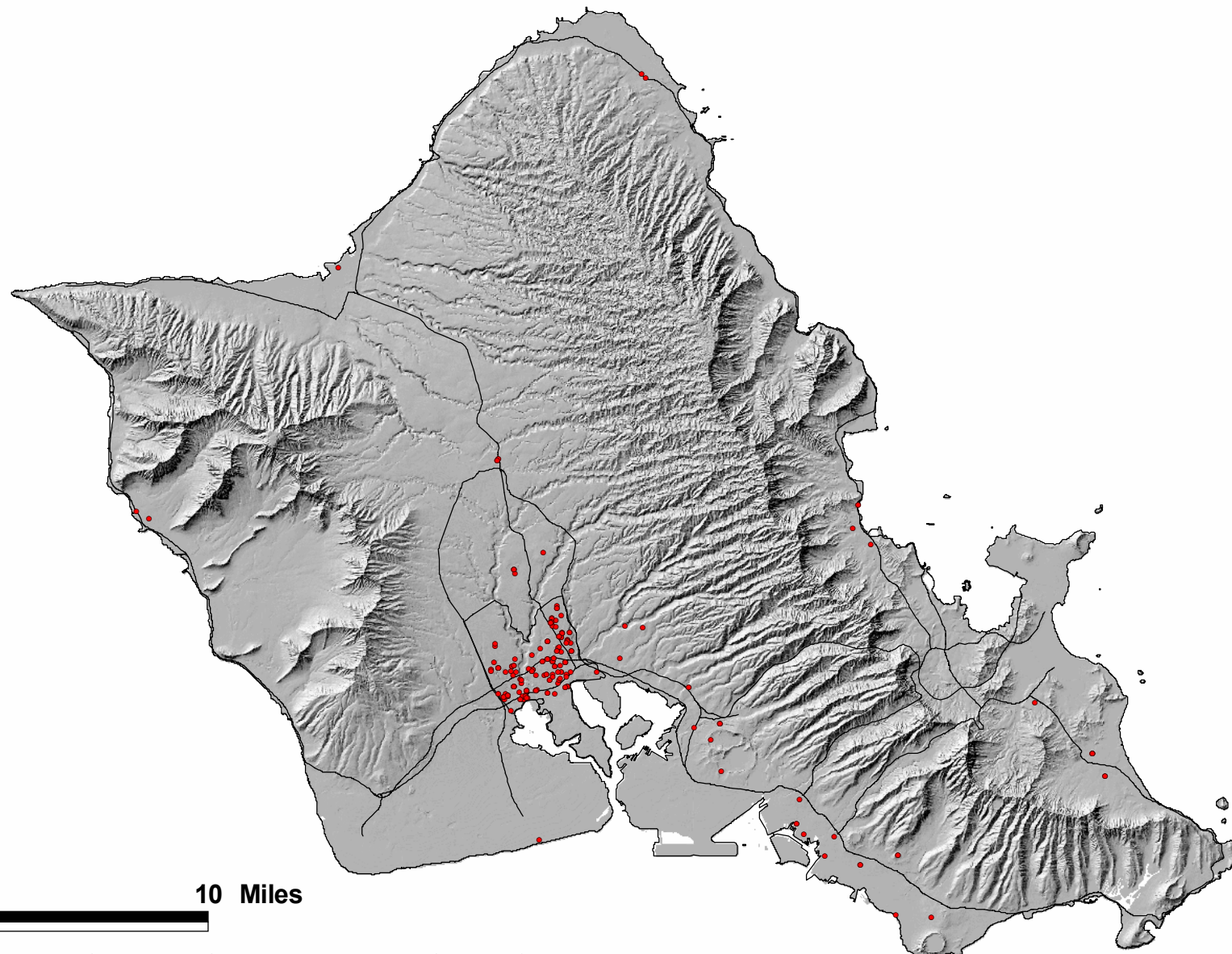
Offense Locations for Waipahu Male Juveniles by Offense Type



Offense Locations for Waipahu Female Juveniles by Offense Type

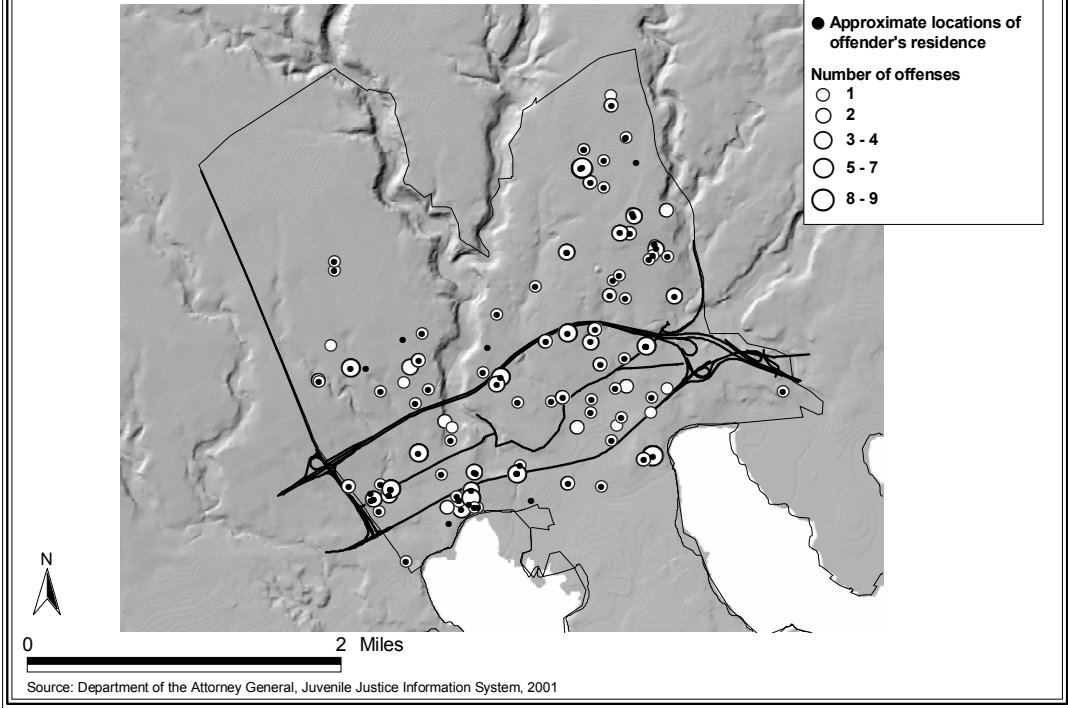


Runaway Offense Locations for Waipahu Juveniles

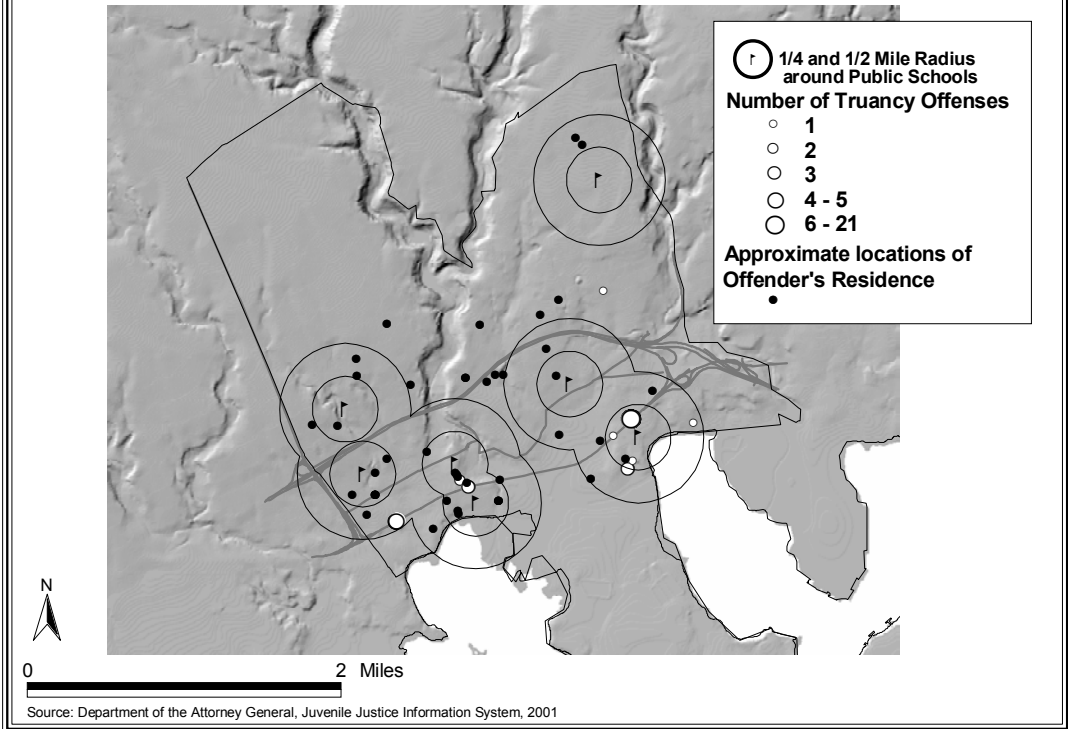


Source: Department of the Attorney General, Juvenile Justice Information System, 2001

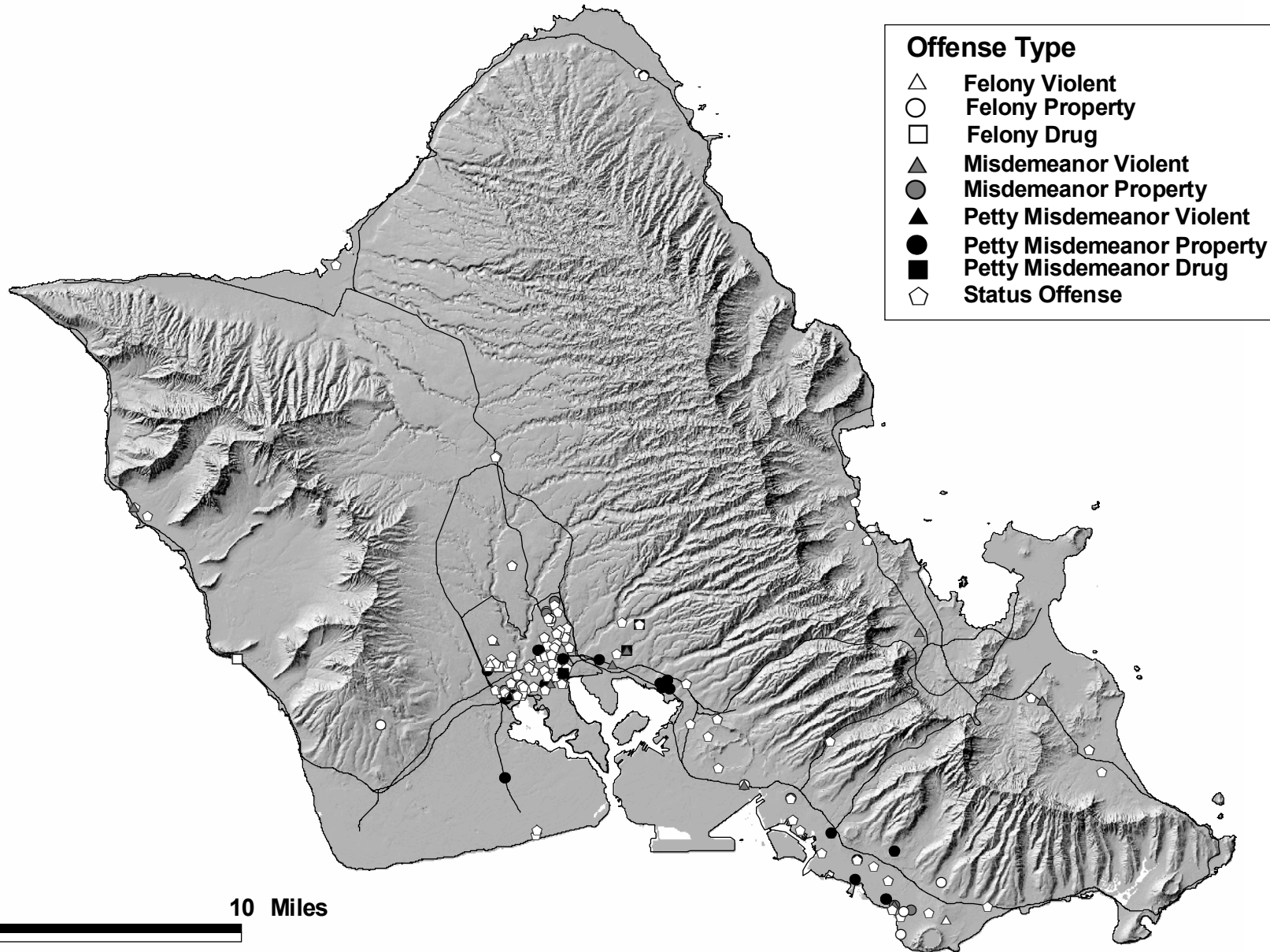
Approximate Locations for Waipahu Juvenile Runaway Offender's Residence and Offense Locations



Truancy Offense Locations for Waipahu Juveniles

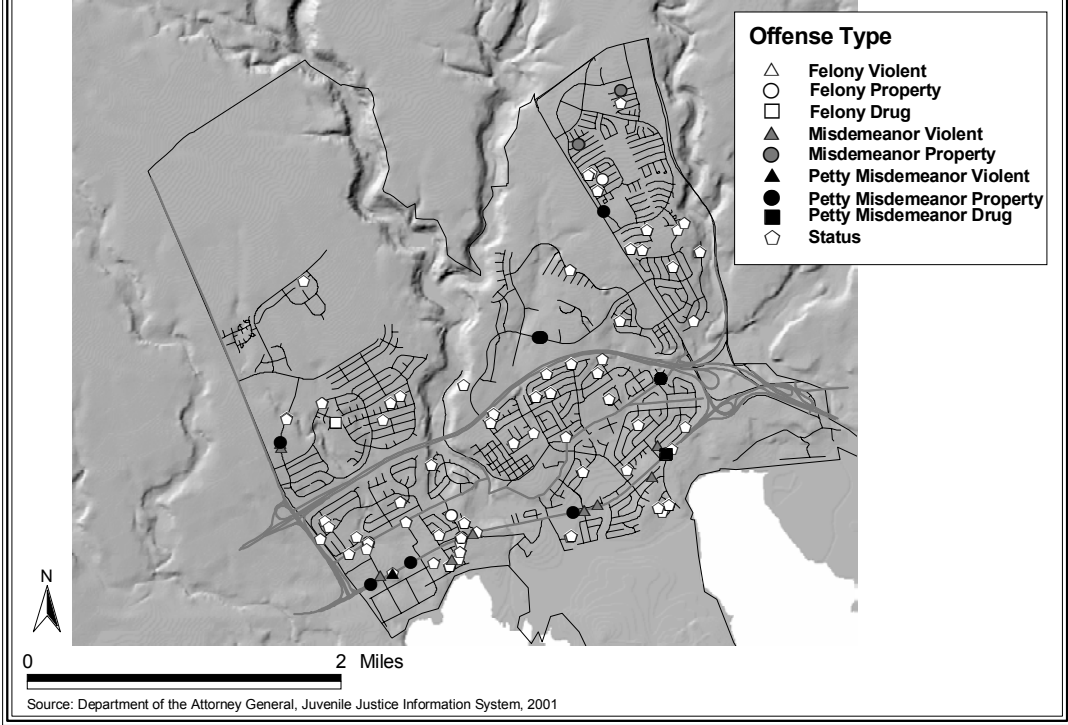


Offense Locations for Repeat Offenders Residing in Waipahu

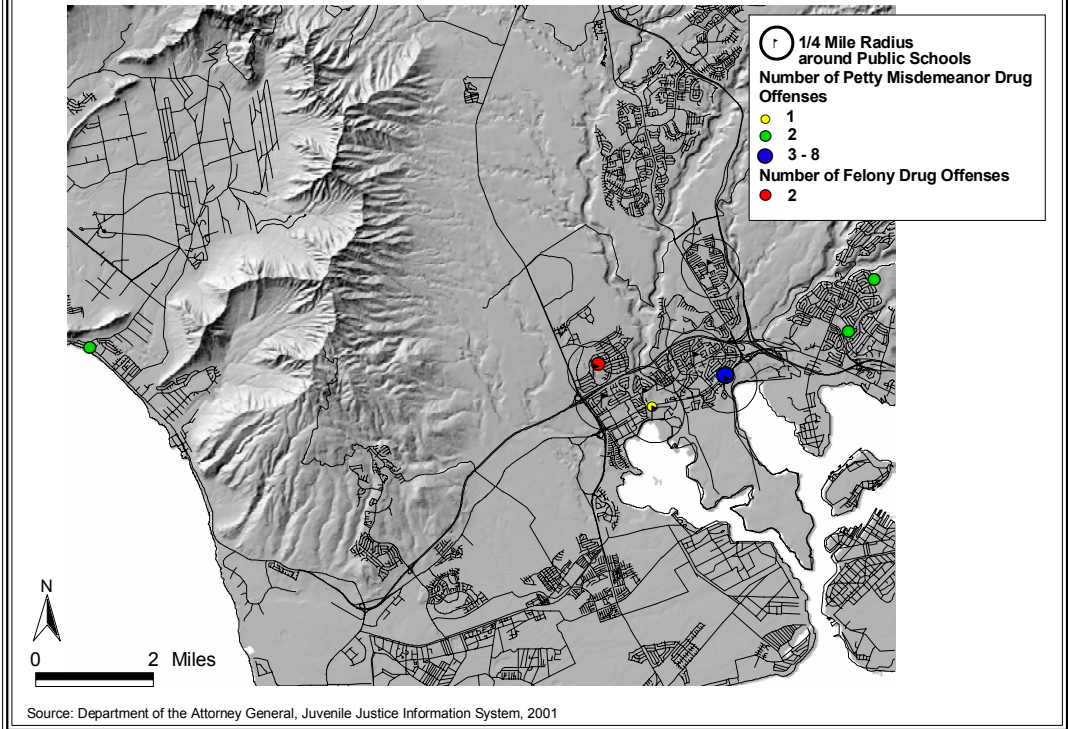


Source: Department of the Attorney General, Juvenile Justice Information System, 2001

Offense Locations for Waipahu Juvenile Repeat Offenders

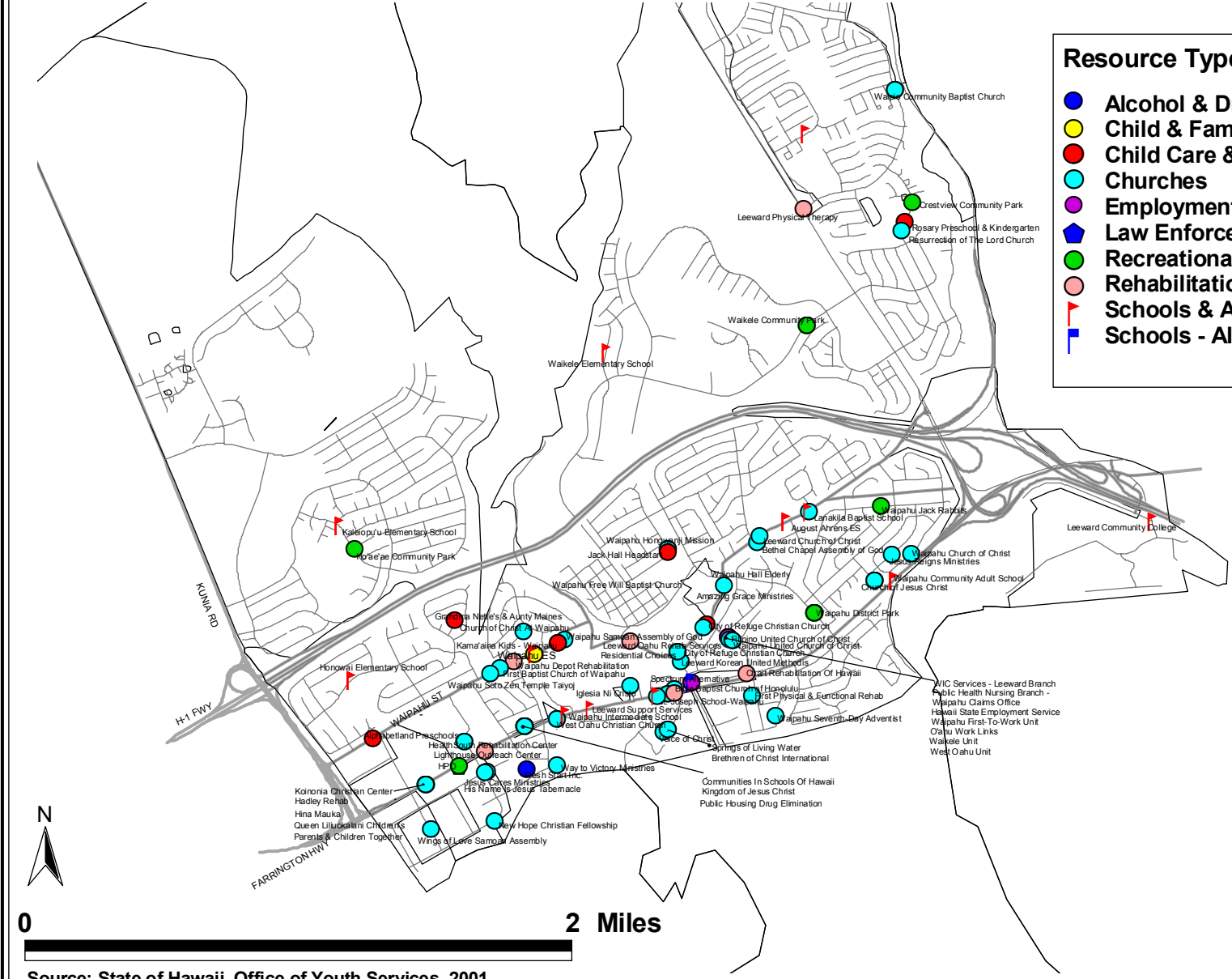


Drug Offense Locations for Waipahu Juveniles



Youth-Related Resources in Waipahu by Type

- Resource Type**
- Alcohol & Drug Treatment
 - Child & Family Services
 - Child Care & Preschools
 - Churches
 - Employment & Job Training
 - ♣ Law Enforcement
 - Recreational Sites and Parks
 - Rehabilitation
 - ▴ Schools & After School Programs
 - ▴ Schools - Alternative



0 2 Miles

Source: State of Hawaii, Office of Youth Services, 2001

Table 11:
Offenses inside and outside of Waipahu for Waipahu juveniles and non-Waipahu juveniles

Residential location:	Waipahu juvenile		Non-Waipahu juvenile		Waipahu juvenile	
Offense location:	offense inside Waipahu		offense inside Waipahu		offense outside Waipahu	
Offense type	Number	Percentage	Number	Percentage	Number	Percentage
Violent - Felony	7	1.8	1	1.0	5	2.3
Violent - Misdemeanor	50	12.5	16	16.3	19	8.9
Violent - Petty Misdemeanor	2	0.5	0	0.0	1	0.5
Property - Felony	10	2.5	2	2.0	8	3.7
Property - Misdemeanor	9	2.3	0	0.0	10	4.7
Property - Petty Misdemeanor	34	8.5	21	21.4	65	30.4
Drug - Felony	2	0.5	0	0.0	2	0.9
Drug - Petty Misdemeanor	8	2.0	1	1.0	4	1.9
Other - Misdemeanor	4	1.0	0	0.0	6	2.8
Other - Petty Misdemeanor	17	4.3	1	1.0	18	8.4
Status Offense	256	64.2	56	57.1	76	35.5
Total	399	100.0	98	100.0	214	100

Source: Department of the Attorney General, Juvenile Justice Information System, 2001

Table 12:
Offenses inside and outside of Waipahu for Waipahu juveniles and non-Waipahu juveniles by gender

Residential location:	Waipahu juvenile					Non-Waipahu juvenile					Waipahu juvenile				
Offense location:	offense inside Waipahu					offense inside Waipahu					offense outside Waipahu				
Offense type	All	Male	Female	% Male	% Female	All	Male	Female	% Male	% Female	All	Male	Female	% Male	% Female
Violent - Felony	7	7	0	100	0.0	1	1	0	100	0.0	5	4	1	80.0	20.0
Violent - Misdemeanor	50	49	1	98.0	2.0	16	8	8	50.0	50.0	19	15	4	78.9	21.1
Violent - Petty Misdemeanor	2	0	2	0.0	100	0	0	0	0.0	0.0	1	1	0	100	0.0
Property - Felony	10	6	4	60.0	40.0	2	2	0	100	0.0	8	4	4	50.0	50.0
Property - Misdemeanor	9	8	1	88.9	11.1	0	0	0	0.0	0.0	10	5	5	50.0	50.0
Property - Petty Misdemeanor	34	26	8	76.5	23.5	21	9	12	42.9	57.1	65	37	28	56.9	43.1
Drug - Felony	2	2	0	100	0.0	0	0	0	0.0	0.0	2	2	0	100	0.0
Drug - Petty Misdemeanor	8	8	0	100	0.0	1	1	0	100	0.0	4	4	0	100	0.0
Other - Misdemeanor	4	4	0	100	0.0	0	0	0	0.0	0.0	6	4	2	66.7	33.3
Other - Petty Misdemeanor	17	14	3	82.4	17.6	1	1	0	100	0.0	18	14	4	77.8	22.2
Status Offense	256	103	153	40.2	59.8	56	14	42	25.0	75.0	76	35	41	46.1	53.9
Total	399	227	172	56.9	43.1	98	36	62	36.7	63.3	214	125	89	57.6	41.0

Source: Department of the Attorney General, Juvenile Justice Information System, 2001

Table 13:
Offenses for Waipahu juveniles by type and age

Offense Type	Number							Percentage					
	All	12 & under	13	14	15	16	17	12 & under	13	14	15	16	17
Violent - Felony	12	2	2	3	2	0	3	16.7	16.7	25.0	16.7	0.0	25.0
Violent - Misdemeanor	69	3	9	11	18	18	10	4.3	13.0	15.9	26.1	26.1	14.5
Violent - Petty Misdemeanor	3	0	0	2	1	0	0	0.0	0.0	66.7	33.3	0.0	0.0
Property - Felony	18	2	2	2	5	2	5	11.1	11.1	11.1	27.8	11.1	27.8
Property - Misdemeanor	19	1	6	5	3	3	1	5.3	31.6	26.3	15.8	15.8	5.3
Property - Petty Misdemeanor	99	5	21	18	26	18	11	5.1	21.2	18.2	26.3	18.2	11.1
Drug - Felony	4	0	0	0	0	0	4	0.0	0.0	0.0	0.0	0.0	100
Drug - Petty Misdemeanor	12	0	3	2	3	3	1	0.0	25.0	16.7	25.0	25.0	8.3
Other - Felony	1	0	0	1	0	0	0	0.0	0.0	100.0	0.0	0.0	0.0
Other - Misdemeanor	10	0	0	0	4	2	4	0.0	0.0	0.0	40.0	20.0	40.0
Other - Petty Misdemeanor	35	4	4	7	10	6	4	11.4	11.4	20.0	28.6	17.1	11.4
Status Offense Violations	332	18	42	51	113	70	38	5.4	12.7	15.4	34.0	21.1	11.4
	2	0	0	0	0	0	2	0.0	0.0	0.0	0.0	0.0	100
Total	616	35	89	102	185	122	83	5.7	14.4	16.6	30.0	19.8	13.5

Note: Includes all offenses for juveniles residing in Waipahu regardless of offense location

Source: Department of the Attorney General, Juvenile Justice Information System, 2001

Table 14:
Waipahu juvenile arrestees by age

Age	Offense inside Waipahu		Offense outside Waipahu	
	Number	Percentage	Number	Percentage
12 and under	16	7.8	4	2.7
13	27	13.1	26	17.6
14	36	17.5	29	19.6
15	51	24.8	33	22.3
16	45	21.8	33	22.3
17	31	15.0	23	15.5
Total	206	100	148	100

Note: Percentage based on total of 354 juveniles residing in Waipahu

Source: Department of the Attorney General, Juvenile Justice Information System, 2001

Table 15:
Waipahu juvenile arrestees by primary ethnicity

Ethnicity	Number	Percentage
Caucasian	36	10.2
Black	10	2.8
Filipino	126	35.6
Hawaiian	53	15.0
Samoaan	62	17.5
Japanese	24	6.8
Chinese	5	1.4
Korean	7	2.0
Micronesia	7	2.0
Tongan	8	2.3
Other Pacific Islander	4	1.1
Others	12	3.4
Total	354	100

Note: Percentage based on total of 354 juveniles residing in Waipahu area

Source: Department of the Attorney General, Juvenile Justice Information System, 2001

Table 16:
Offenses for Waipahu juveniles by type and primary ethnicity

Offense type	Number											Percentage														
	All	Caucasian	Black	Chinese	Filipino	Hawaiian	Japanese	Korean	Micronesia	Other Pacific Islander	Samoaan	Tongan	Others	Caucasian	Black	Chinese	Filipino	Hawaiian	Japanese	Korean	Micronesia	Other Pacific Islander	Samoaan	Tongan	Others	Total
Violent - Felony	12	3	2		1		1					4	1	25.0	16.7	0.0	8.3	0.0	8.3	0.0	0.0	0.0	33.3	0.0	8.3	100
Violent - Misdemeanor	69	4	2	1	8	11	4	1				31	5	5.8	2.9	1.4	11.6	15.9	5.8	1.4	0.0	0.0	44.9	7.2	2.9	100
Violent - Petty Misdemeanor	3				3									0.0	0.0	0.0	100	0.0	0.0	0.0	0.0	0.0	0.0	0.0	0.0	100
Property - Felony	18	3	1		4	6		1				1	2	16.7	5.6	0.0	22.2	33.3	0.0	5.6	0.0	0.0	5.6	0.0	11.1	100
Property - Misdemeanor	19	2		1	9	3	3							10.5	0.0	5.3	47.4	15.8	15.8	0.0	0.0	0.0	0.0	0.0	5.3	100
Property - Petty Misdemeanor	99	14	3	4	34	14	8	4	3	2	9	3	1	14.1	3.0	4.0	34.3	14.1	8.1	4.0	3.0	2.0	9.1	3.0	1.0	100
Drug - Felony	4		2					2						0.0	50.0	0.0	0.0	0.0	0.0	50.0	0.0	0.0	0.0	0.0	0.0	100
Drug - Petty Misdemeanor	12	1		1	5	1	3					1		8.3	0.0	8.3	41.7	8.3	25.0	0.0	0.0	0.0	8.3	0.0	0.0	100
Other - Felony	1				1									0.0	0.0	0.0	0.0	0.0	0.0	0.0	0.0	0.0	0.0	0.0	0.0	0
Other - Misdemeanor	10				3	2	2	1				2		0.0	0.0	0.0	30.0	20.0	20.0	10.0	0.0	0.0	20.0	0.0	0.0	100
Other - Petty Misdemeanor	35	3	5	1	8	6	2	2	1			7		8.6	14.3	2.9	22.9	17.1	5.7	5.7	2.9	0.0	20.0	0.0	0.0	100
Status Offense	332	31	13	3	127	81	21	2	6	3	37	1	7	9.3	3.9	0.9	38.3	24.4	6.3	0.6	1.8	0.9	11.1	0.3	2.1	100
Violations	2				1									0.0	0.0	0.0	50.0	0.0	0.0	0.0	0.0	0.0	0.0	0.0	50.0	100
Total	616	61	28	11	204	124	44	13	10	5	92	9	15	9.9	4.5	1.8	33.1	20.1	7.1	2.1	1.6	0.8	14.9	1.5	2.4	100

Note: Includes all offenses in Waipahu for any juvenile

Source: Department of the Attorney General, Juvenile Justice Information System, 2001

Table 17:
Offenses for Waipahu juveniles by type and gender

Offense Type	All	Number		Percentage	
		Male	Female	Male	Female
Violent - Felony	12	11	1	91.7	8.3
Violent - Misdemeanor	69	64	5	92.8	7.2
Violent - Petty Misdemeanor	3	1	2	33.3	66.7
Property - Felony	18	10	8	55.6	44.4
Property - Misdemeanor	19	13	6	68.4	31.6
Property - Petty Misdemeanor	99	63	36	63.6	36.4
Drug - Felony	4	4	0	100	0.0
Drug - Petty Misdemeanor	12	12	0	100	0.0
Other - Felony	1	1	0	100	0.0
Other - Misdemeanor	10	8	2	80.0	20.0
Other - Petty Misdemeanor	35	28	7	80.0	20.0
Subtotal	282	215	67	76.2	23.8
Status Offense	332	138	194	41.6	58.4
Violations	2	2	0	100	0.0
Subtotal	334	140	194	41.9	58.1
Total	616	355	261	57.6	42.4

Note: Includes all offenses for juveniles residing in Waipahu regardless of offense location

Source: Department of the Attorney General, Juvenile Justice Information System, 2001

Table 18:
Waipahu juvenile arrestees by gender

Gender	Number	Percentage
Male	213	60.2
Female	141	39.8
Total	354	100

Note: Percentage based on total of 354 juveniles residing in Waipahu

Source: Department of the Attorney General, Juvenile Justice Information System, 2001

Table 19:

Status offenses inside and outside of Waipahu for Waipahu juveniles and non-Waipahu juveniles

Residential location:	Waipahu juvenile offense inside Waipahu		Non-Waipahu juvenile offense inside Waipahu		Waipahu juvenile offense outside Waipahu	
Offense location:	Number	Percentage	Number	Percentage	Number	Percentage
Status Offenses						
Beyond parental control	3	1.2	0	0.0	2	2.6
Curfew violation	2	0.8	3	5.4	8	10.5
Injurious behavior	8	3.1	1	1.8	2	2.6
Runaway	204	79.7	41	73.2	50	65.8
Truancy	39	15.2	11	19.6	14	18.4
Total	256	100	56	100	76	100

Source: Department of the Attorney General, Juvenile Justice Information System, 2001

Table 20:

Status offenses for Waipahu juveniles by age

Status Offenses	All	Number						Percentage					
		12 & under	13	14	15	16	17	12 & under	13	14	15	16	17
Beyond parental control	5	1	0	1	2	0	1	20.0	0.0	20.0	40.0	0.0	20.0
Curfew violation	10	0	1	5	4	0	0	0.0	10.0	50.0	40.0	0.0	0.0
Injurious behavior	10	1	0	3	3	1	2	10.0	0.0	30.0	30.0	10.0	20.0
Runaway	254	16	35	34	88	52	29	6.3	13.8	13.4	34.6	20.5	11.4
Truancy	53	0	6	8	16	17	6	0.0	11.3	15.1	30.2	32.1	11.3
Total	332	18	42	51	113	70	38	5.4	12.7	15.4	34.0	21.1	11.4

Note: Includes all status offenses for juveniles residing in Waipahu regardless of offense locations

Source: Department of the Attorney General, Juvenile Justice Information System, 2001

Table 21:

Status offenses for Waipahu juveniles by gender

Status Offenses	All	Number		Percent	
		Male	Female	Male	Female
Beyond parental control	5	1	4	20	80
Curfew violation	10	6	4	60	40
Injurious behavior	10	5	5	50	50
Runaway	254	95	159	37.4	62.6
Truancy	53	31	22	58.5	41.5
Total	332	138	194	41.6	58.4

Note: Includes all status offenses for juveniles residing in Waipahu regardless of offense locations

Source: Department of the Attorney General, Juvenile Justice Information System, 2001

**Table 22:
Status offenses for Waipahu juveniles by primary ethnicity**

Offense Type	Number											Percentage													
	All	Caucasian	Black	Chinese	Filipino	Hawaiian	Japanese	Korean	Micronesian	Other Pacific Islander	Samoan	Tongan	Others	Caucasian	Black	Chinese	Filipino	Hawaiian	Japanese	Korean	Micronesian	Other Pacific Islander	Samoan	Tongan	Others
Beyond parental control	5	2			2							1	40.0	0.0	0.0	40.0	0.0	0.0	0.0	0.0	0.0	0.0	0.0	0.0	20.0
Curfew violation	10	2			6	1		1					20.0	0.0	0.0	60.0	10.0	0.0	0.0	10.0	0.0	0.0	0.0	0.0	0.0
Injurious behavior	10		1		1	6					2		0.0	10.0	0.0	10.0	60.0	0.0	0.0	0.0	0.0	20.0	0.0	0.0	0.0
Runaway	254	26	11	3	92	65	18	2	2		30	1	10.2	4.3	1.2	36.2	25.6	7.1	0.8	0.8	0.0	11.8	0.4	1.6	1.6
Truancy	53	1	1		26	9	3		3	3	5	2	1.9	1.9	0.0	49.1	17.0	5.7	0.0	5.7	5.7	9.4	0.0	3.8	3.8
Total	332	31	13	3	127	81	21	2	6	3	37	1	9.3	3.9	0.9	38.3	24.4	6.3	0.6	1.8	0.9	11.1	0.3	2.1	

Notes: Includes all status offenses for juveniles residing in Waipahu regardless of offense locations

Source: Department of the Attorney General, Juvenile Justice Information System, 2001

**Table 23:
Truancy offenses for Waipahu juveniles within .25 and .5 mile of public schools**

Schools	Number of offenses	
	.25 mile radius	.5 mile radius
Waipahu High School	27	28
Waipahu Intermediate School	5	5
Waipahu Elementary School	5	5
Kanoelani Elementary School	0	0
Kaleiopuu Elementary School	0	0
Honowai Elementary School	0	5
August Ahrens Elementary School	0	0
Total	37	43

Source: Department of the Attorney General, Juvenile Justice Information System, 2001

Notes: Fourteen truancy offenses occurred outside Waipahu

Offenses that were within the radius of more than one school are double counted

Table 24:
Repeat offenses inside and outside of Waipahu for Waipahu juveniles and non-Waipahu juveniles

Residential location: Offense location:	Waipahu juvenile offense inside Waipahu		Non-Waipahu juvenile offense inside Waipahu		Waipahu juvenile offense outside Waipahu	
	Number	Percentage	Number	Percentage	Number	Percentage
Violent - Felony	2	0.8	0	0.0	4	3.1
Violent - Misdemeanor	21	8.7	11	22.4	14	11.0
Violent - Petty Misdemeanor	1	0.4	0	0.0	0	0.0
Property - Felony	6	2.5	0	0.0	5	3.9
Property - Misdemeanor	5	2.1	0	0.0	5	3.9
Property - Petty Misdemeanor	14	5.8	5	10.2	19	15.0
Drug - Felony	2	0.8	0	0.0	2	1.6
Drug - Petty Misdemeanor	4	1.7	0	0.0	2	1.6
Other - Misdemeanor	2	0.8	0	0.0	4	3.1
Other - Petty Misdemeanor	14	5.8	0	0.0	14	11.0
Status Offense	170	70.5	33	67.3	56	44.1
Total	241	100	49	100	127	100

Source: Department of the Attorney General, Juvenile Justice Information System, 2001

Table 25:
Repeat offenses for Waipahu juveniles by age

Offense Type	All	Number						Percentage					
		12 & 13 under	14	15	16	17	12 & 13 under	14	15	16	17		
Violent - Felony	6		1	1	2		2	0.0	16.7	16.7	33.3	0.0	33.3
Violent - Misdemeanor	35	1	2	4	16	7	5	2.9	5.7	11.4	45.7	20.0	14.3
Violent - Petty Misdemeanor	1			1				0.0	0.0	100	0.0	0.0	0.0
Property - Felony	11	2	2	1	2	1	3	18.2	18.2	9.1	18.2	9.1	27.3
Property - Misdemeanor	10	1	1	3	2	2	1	10.0	10.0	30.0	20.0	20.0	10.0
Property - Petty Misdemeanor	33		4	7	13	4	5	0.0	12.1	21.2	39.4	12.1	15.2
Drug - Felony	4						4	0.0	0.0	0.0	0.0	0.0	100
Drug - Petty Misdemeanor	6	0	1	1	2	2	0	0.0	16.7	16.7	33.3	33.3	0.0
Other - Felony	1			1				0.0	0.0	100	0.0	0.0	0.0
Other - Misdemeanor	6				4		2	0.0	0.0	0.0	66.7	0.0	33.3
Other - Petty Misdemeanor	28	4	4	3	10	6	1	14.3	14.3	10.7	35.7	21.4	3.6
Status Offense	226	9	32	32	83	47	23	4.0	14.2	14.2	36.7	20.8	10.2
Violations	1						1	0.0	0.0	0.0	0.0	0.0	100
Total	368	17	47	54	134	69	47	4.6	12.8	14.7	36.4	18.8	12.8

Note: Includes all repeat offenses for juveniles residing in Waipahu regardless of offense locations

Source: Department of the Attorney General, Juvenile Justice Information System, 2001

Table 26:
Waipahu juvenile repeat offenders by age

Age	Number	Percentage
13	4	1.1
14	6	1.7
15	13	3.7
16	11	3.1
17	8	2.3
Total	42	11.9

Note: Percentage based on total of 354 juveniles residing in Waipahu

Source: Department of the Attorney General, Juvenile Justice Information System, 2001

Table 27:
Repeat offenses for Waipahu juveniles by gender

Offense Type	All	Number		Percentage	
		Male	Female	Male	Female
Violent - Felony	6	5	1	83.3	16.7
Violent - Misdemeanor	35	31	4	88.6	11.4
Violent - Petty Misdemeanor	1	0	1	0.0	100
Property - Felony	11	5	6	45.5	54.5
Property - Misdemeanor	10	9	1	90.0	10.0
Property - Petty Misdemeanor	33	24	9	72.7	27.3
Drug - Felony	4	4	0	100	0.0
Drug - Misdemeanor	0	0	0	0.0	0.0
Drug - Petty Misdemeanor	6	6	0	100	0.0
Other - Felony	1	1	0	100	0.0
Other - Misdemeanor	6	4	2	66.7	33.3
Other - Petty Misdemeanor	28	23	5	82.1	17.9
Status Offense	226	86	140	38.1	61.9
Violations	1	1	0	100	0.0
Total	368	199	169	54.1	45.9

Note: Includes all repeat offenses for juveniles residing in Waipahu regardless of offense locations

Source: Department of the Attorney General, Juvenile Justice Information System, 2001

Table 28:
Repeat offenses for Waipahu juveniles by primary ethnicity

Offense Type	All	Number										Percentage														
		Caucasian	Black	Chinese	Filipino	Hawaiian	Japanese	Korean	Micronesian	Other Pacific Islander	Samoan	Tongan	Others	Caucasian	Black	Chinese	Filipino	Hawaiian	Japanese	Korean	Micronesian	Other Pacific Islander	Samoan	Tongan	Others	
Violent - Felony	6	2	2									2	33.3	33.3	0.0	0.0	0.0	0.0	0.0	0.0	0.0	0.0	0.0	33.3	0.0	0.0
Violent - Misdemeanor	35	3	2		4	7	3					14	2	8.6	5.7	0.0	11.4	20.0	8.6	0.0	0.0	0.0	40.0	5.7	0.0	
Violent - Petty Misdemeanor	1				1									0.0	0.0	0.0	100	0.0	0.0	0.0	0.0	0.0	0.0	0.0	0.0	
Property - Felony	11	2	1		3	4	1							18.2	9.1	0.0	27.3	36.4	0.0	9.1	0.0	0.0	0.0	0.0	0.0	
Property - Misdemeanor	10	1			3	2	3						1	10.0	0.0	0.0	30.0	20.0	30.0	0.0	0.0	0.0	0.0	0.0	10.0	
Property - Petty Misdemeanor	33	3	1	4	8	9	1	1	2	2	2			9.1	3.0	12.1	24.2	27.3	3.0	3.0	6.1	6.1	6.1	0.0	0.0	
Drug - Felony	4		2											0.0	50.0	0.0	0.0	0.0	0.0	50.0	0.0	0.0	0.0	0.0	0.0	
Drug - Petty Misdemeanor	6	1		1	1	1	2							16.7	0.0	16.7	16.7	16.7	33.3	0.0	0.0	0.0	0.0	0.0	0.0	
Other - Felony	1				1									0.0	0.0	0.0	100	0.0	0.0	0.0	0.0	0.0	0.0	0.0	0.0	
Other - Misdemeanor	6				2	2					2			0.0	0.0	0.0	33.3	33.3	0.0	0.0	0.0	0.0	33.3	0.0	0.0	
Other - Petty Misdemeanor	28	1	4	1	5	5	2	2	1		7			3.6	14.3	3.6	17.9	17.9	7.1	7.1	3.6	0.0	25.0	0.0	0.0	
Status Offense	226	21	11	2	87	63	16	2	1		21	2		9.3	4.9	0.9	38.5	27.9	7.1	0.9	0.4	0.0	9.3	0.0	0.9	
Violations	1											1		0.0	0.0	0.0	0.0	0.0	0.0	0.0	0.0	0.0	0.0	0.0	100	
Total	368	34	23	8	115	93	27	8	4	2	48	2	4	9.2	6.3	2.2	31.3	25.3	7.3	2.2	1.1	0.5	13.0	0.5	1.1	

Note: Includes all repeat offenses for juveniles residing in Waipahu regardless of offense locations

Source: Department of the Attorney General, Juvenile Justice Information System, 2001

Table 29:
Drug offenses for Waipahu juveniles by age

Felony Drug	All	Number						Percentage					
		12 & under	13	14	15	16	17	12 & under	13	14	15	16	17
Drug paraphernalia	2	0	0	0	0	0	2	0.0	0.0	0.0	0.0	0.0	100
Prom dang drug 3*	2	0	0	0	0	0	2	0.0	0.0	0.0	0.0	0.0	100
Petty Misdemeanor Drug													
Prom detri drug 3**	12	0	3	2	3	3	1	0.0	25.0	16.7	25.0	25.0	8.3
Total	16	0	3	2	3	3	5	0.0	18.8	12.5	18.8	18.8	31.3

Note: Includes all drug offenses for juveniles residing in Waipahu regardless of offense locations

Source: Department of the Attorney General, Juvenile Justice Information System, 2001

*Promotion of dangerous drug 3

**Promotion of detrimental drug 3

Table 30:

Drug offenses inside and outside of Waipahu for Waipahu juveniles and non-Waipahu juveniles

Residential location: Offense location:	Waipahu juvenile offense inside Waipahu		Non-Waipahu juvenile offense inside Waipahu		Waipahu juvenile offense outside Waipahu	
	Number	Percentage	Number	Percentage	Number	Percentage
Felony Drug						
Drug paraphernalia	1	10.0		0.0	1	16.7
Prom dang drug 3*	1	10.0		0.0	1	16.7
Petty Misdemeanor Drug						
Prom detri drug 3**	8	80.0	1	100	4	66.7
Total	10	100	1	100	6	100

Source: Department of the Attorney General, Juvenile Justice Information System, 2001

*Promotion of dangerous drug 3

**Promotion of detrimental drug 3

Table 31:

Drug offenses for Waipahu juveniles by gender

Felony Drug	All	Number		Percentage	
		Male	Female	Male	Female
Drug paraphernalia	2	2	0	100	0.0
Prom dang drug 3*	2	2	0	100	0.0
Petty Misdemeanor Drug					
Prom detri drug 3**	12	12	0	100	0.0
Total	16	16	0	100	0.0

Note: Includes all drug offenses for juveniles residing in Waipahu regardless of offense locations

Source: Department of the Attorney General, Juvenile Justice Information System, 2001

* Promotion of dangerous drug 3

**Promotion of detrimental drug 3

Table 32:

Drug offenses for Waipahu juveniles by primary ethnicity

Offense Type	All	Number										Percentage													
		Caucasian	Black	Chinese	Filipino	Hawaiian	Japanese	Korean	Micronesian	Other Pacific Islander	Samoan	Tongan	Others	Caucasian	Black	Chinese	Filipino	Hawaiian	Japanese	Korean	Micronesian	Other Pacific Islander	Samoan	Tongan	Others
Felony Drug																									
Drug paraphernalia	2		1				1						0.0	50.0	0.0	0.0	0.0	0.0	50.0	0.0	0.0	0.0	0.0	0.0	0.0
Prom dang drug 3*	2		1				1						0.0	50.0	0.0	0.0	0.0	0.0	50.0	0.0	0.0	0.0	0.0	0.0	0.0
Petty Misdemeanor Drug																									
Prom detri drug 3**	12	1	1	5	1	3		1					8.3	0.0	8.3	41.7	8.3	25.0	0.0	0.0	0.0	8.3	0.0	0.0	
Total	16	1	2	1	5	1	3	2	0	0	1	0	6.3	12.5	6.3	31.3	6.3	18.8	12.5	0.0	0.0	6.3	0.0	0.0	

Note: Includes all drug offenses for juveniles residing in Waipahu regardless of offense locations

Source: Department of the Attorney General, Juvenile Justice Information System, 2001

*Promotion of dangerous drug 3

**Promotion of detrimental drug 3

Appendix: Crime Mapping Resources

National Institute of Justice, Mapping and Analysis for Public Safety publications are available at:
< <http://www.ojp.usdoj.gov/nij/maps/pubs.html>>

Selected Titles:

- Mapping Crime: Principle and Practice
- Crime Mapping Case Studies, Vol. I & II
- Using Geographic Information Systems to Map Crime Victim Services
- Mapping & Crime Analysis by Community Organizations in Hartford, CN
- Crime Mapping and Data Confidentiality
- Measurement and Analysis of Crime and Justice, Chapter 4

Police Foundation, Crime Mapping Laboratory Occasional Papers are available at:
<<http://www.policefoundation.org/docs/library.html#pubs>>

Selected Titles:

- Crime Analysis and Crime Mapping Information Clearinghouse (3rd Edition)
- Frequently Asked Questions of Crime Analysis and Mapping
- Guidelines to Implement and Evaluate Crime Analysis and Mapping in Law Enforcement
- Integrating Community Policing and Computer Mapping: Assessing Issues and Needs Among COPS Office Grantees
- Introductory Guide to Crime Analysis and Mapping
- Manual of Crime Analysis Map Production
- Users' Guide to Mapping Software for Police Agencies (3rd Edition)

Other Publications:

Garson, David and Irvin Vann. 2001. Resources for Computerized Crime Mapping. *Social Science Computer Review* 19(3):357-362.

Maltz, Michael D., Andrew Gordon, Warren Friedman. 1991. Mapping Crime in its Community Setting: Event Geography Analysis, New York, Springer-Verlag.

Rich, T.F. 1995. *The Use of Computerized Mapping in Crime Control and Prevention Programs*. Washington, DC: U.S. Department of Justice, Office of Justice Programs.

In accordance with the Americans with Disabilities Act, P.L. 101-336, this material is available in an altered format, upon request. If you require an altered format, please call the Department of the Attorney General, Crime Prevention and Justice Assistance Division, at (808) 586-1150.