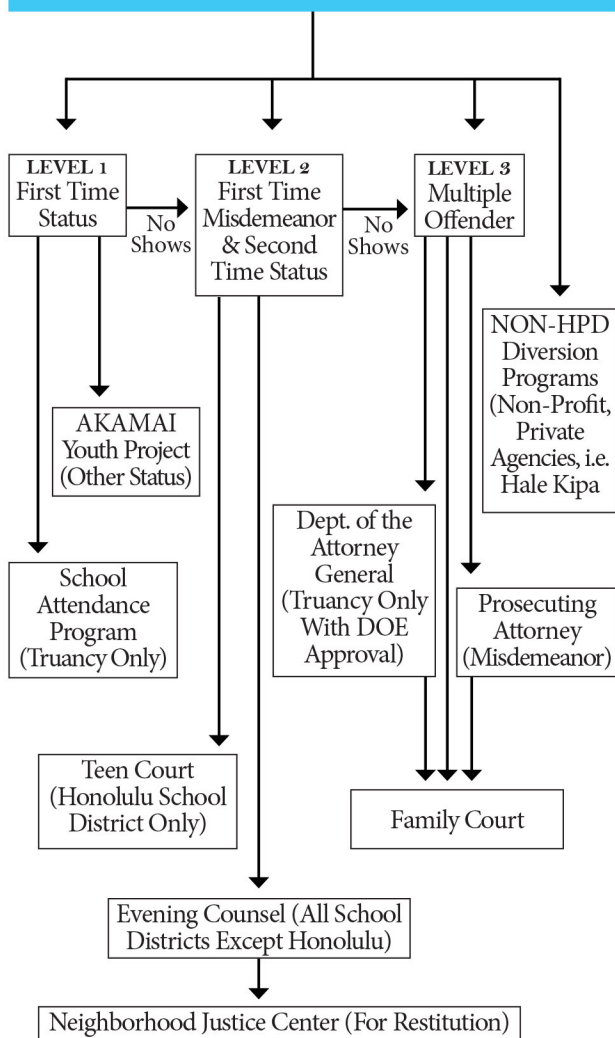


therefore contributing towards the reduction of youth crime. Students who admit their guilt are sentenced by a jury or peers, assisted by volunteers consisting of intermediate and high school students, practicing attorneys, and community agencies.

**Waiver of Jurisdiction:** The judicial process through which the Family Court may transfer the juvenile to the jurisdiction of the adult court. If jurisdiction is waived, the juvenile will be tried as an adult in the adult criminal court.

## HPD Juvenile Services Division



## Dispositions

Aptitude Testing  
 Community Service  
 Community-Based Programs  
 Delinquency Prevention Programs  
 Detention Home  
 Educational Programs  
 Essay Writing  
 Family Counseling  
 Geographical Restrictions  
 Hawaii Youth Correctional Facility  
 Home Chores  
 Home Detention  
 Individual Counseling  
 Letter of Apology  
 Neighborhood Courts Mediation  
 Outreach Programs  
 Persons Restrictions  
 Physical/Medical Examination  
 Probation  
 Restitution  
 Shelter Facilities  
 Substance Abuse Treatment  
 Vocational Testing  
 Youth-Initiated Programs

These criminal justice flow charts were produced to give the general public a better understanding of the criminal justice system. These are basic models and portray the most common sequence of events in response to serious criminal behavior. It is not representative of any individual case.

In accordance with the Americans with Disabilities Act, P.L. 101-336, this material is available in an alternate format, upon request. If you require an alternate format, please call the Department of the Attorney General, Crime Prevention & Justice Assistance Division at (808) 586-1150.

2020

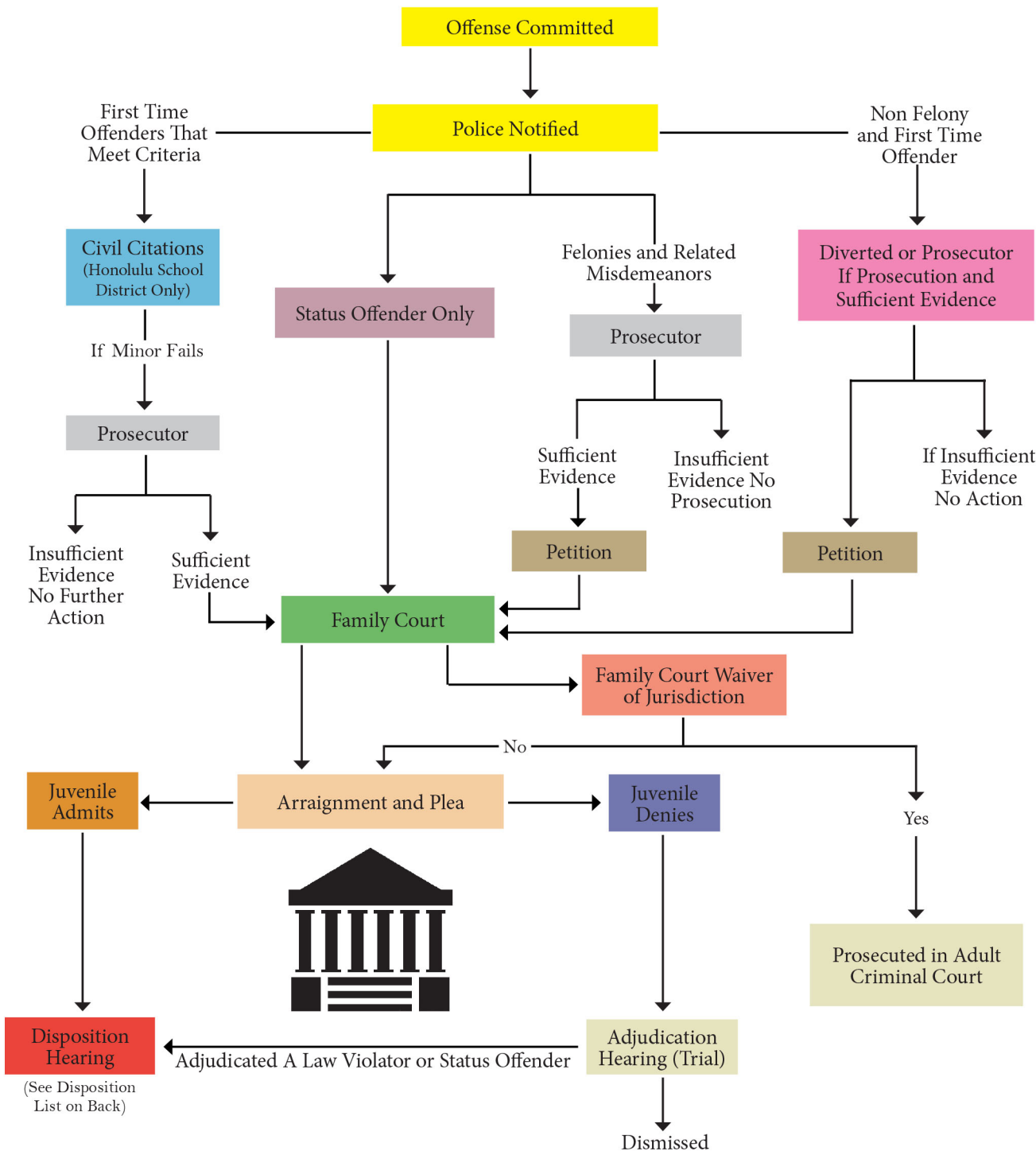
# CRIMINAL JUSTICE FLOW CHART

## City & County of Honolulu Juvenile Cases



Department of the Attorney General  
 Crime Prevention &  
 Justice Assistance Division  
 235 S. Beretania Street, Suite 401  
 Honolulu, HI 96813  
 Phone: (808) 586-1150  
 Website: [ag.hawaii.gov](http://ag.hawaii.gov)

# City & County of Honolulu - Juvenile Cases



## Definitions

**Adjudication Hearing:** Similar to a trial for adults; determines whether or not the juvenile committed the offense.

**AKAMAI Youth Project:** A community-based project composed of the Honolulu Police Department (HPD), the Office of Youth Services, and other government agencies, private groups, volunteers and individuals, who offer on-site services to parents and their youths who are experiencing delinquent behavior.

**Arraignment:** A hearing in which the juvenile is advised formally of the law violation charges against him/her, is advised of his/her constitutional rights and given the opportunity to enter a plea. If juvenile pleads innocent, the case is set for an adjudication hearing (i.e. trial).

**Dismissed:** Similar to adult found not guilty.

**Disposition:** Similar to a sentence in adult court. The court determines the consequences of a juvenile who has been adjudicated for or who has admitted the commission of an offense (see disposition list on back).

**Felony:** A crime which is considered more serious than a *misdemeanor* and with harsher penalties.

**Informal Adjustments:** A non-judicial, administrative, disposition of a referral, where the juvenile and parents agree to certain terms, without a court hearing.

**Misdemeanor:** A crime which is less serious than a *felony* but more serious than a petty misdemeanor.

**Petition:** A legal document filed in Family Court alleging an offense (law violation or status offense) committed by a juvenile.

**Plea:** The juvenile's formal answer to a petition (admits or denies).

**Prosecutor:** The government's attorney who is assigned to prosecute the pending petition against the juvenile.

**School Attendance Program (SAP):** A program for truants who are apprehended by the police.

**Status Offender:** A person under 18 years of age, who commits the act of truancy, runaway, or incorrigibility.

**Teen Court:** A program which focuses on helping first-arrest students avoid further arrests for law violations,