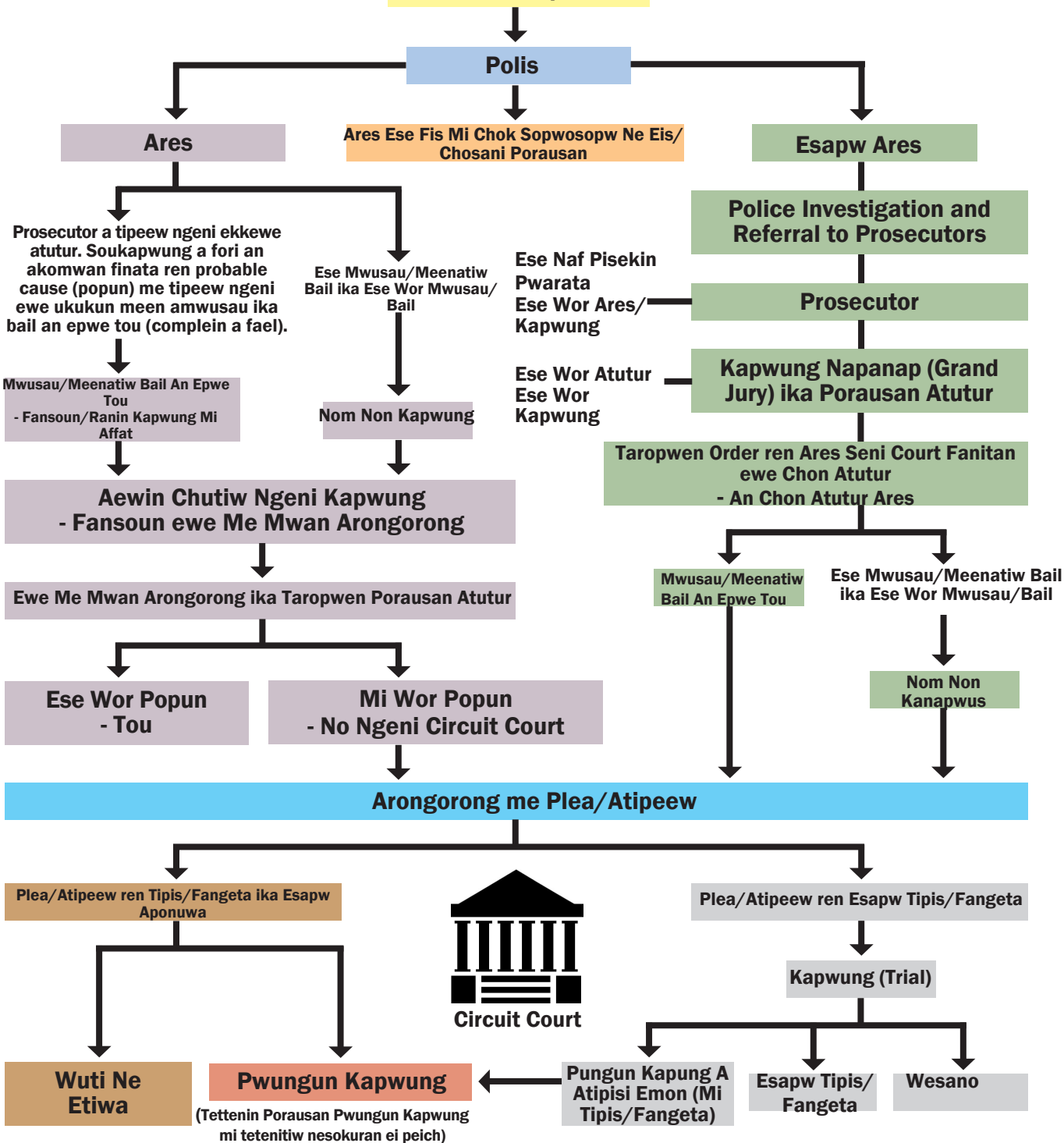


# AN WATTE KEIS REN WATTEN TIPIS/FOFORUNGAW

# AWEWEN

**Met Sakkun Tipis E Fori**



**KapwungunAteten:** Ew kapwung fanitan ar ngeni ewe chon atutur (defendant) ekkewe charges mi katou fanitan me inet fansoun ewe plea/atipeew ren esapw tipis/fangeta (not guilty), tipis/fangeta (guilty), ika esapw wor aponuwa (contest) epwe katonong ika faelini.

**Bail (Amwusau):** Ewe ukukun moni a fen katou seni polis ika court an epwe fis me mwan ewe chon kanapwus epwe tou seni pureik, an epwe fat pun ewe aramas epwe nomw non ewe fansoun kapwung.

**Ew Taropwen Order Ren Ares Seni Court:** Echo taropwe seni court ren an polis ika sheriff ar repwe aresini ewe aramas pokiten an esapw fiti an mwichen kapwung, ika esapw fori ewe order seni court, ika mi fen atutur seni ewe Kapwung Napanap (Grand Jury), ika charged seni poraus ren och tipis ika foforongaw.

**Chon Atutur:** Emon aramas a ares me atutur ren an fori mi ngaw ika tipis.

**Wuti Ne Etiwa (Deferred Acceptance):** Wuti Ne Etiwa ew Plea/Atipeew ren Tipis/Fangeta (Deferred Acceptance ren Guilty Plea (DAG)) ika Wuti Ne Etiwa ew Plea/Atipeew ren Esapw Wor Aponuwa (Deferred Acceptance ren No Contest Plea (DANC)) - ew mwich ika angangan chufengen me mwan kapwung fanitan ewe atipeew ngeni plea/atipeew ren tipis/fangeta ika esapw aponuwa epwe postponed (sopwosopwono) ika ewe chon atutur epwe tou nge esapw kapwung ika tipis/fangeta, ika a amuchano an fansoun ewe court mi ngeni an epwe fori.

**Wesano:** Ewe court mi tongeni awesano ewe keis fanitan ewe chon atutur ika: (1) mi amwuchano ewe keis ika kapwung, ese naf ika ese pochokun pisekin pwarata faniten ewe keis; ika (2) ekkewe chon jury/apwungapwung rese tori ewe finata iwe ewe court a finata pun ese eoch/tawe an ewe keis epwe sopwosopwono.

**Watten Tipis/Foforongaw (Felony):** Ew watten tipis/foforungaw, esapw kukun ren ew kukunun tipis (misdemeanor); ewe punishment (chappen tipis) mi anongonong won ukukun pochokunan ewe tipis/fofor, iwe ekkewe watten tipis mi nuseni ew ier non pureik.

**Kapwung Napanap (Grand Jury):** Ekkoch chon jury (apwungapwung) ren mwan me fefin a foruta ren ukukun engon me onomen aramas ra wisen pwarata ika mei wor popun ar repwe nuku nge ewe chon atutur mi fori ewe/ekewe tipis ika foforongaw.

**Atutur:** Echo taropwen atutur ren foforon ew tipis/foforungaw mi anongonong won met ir mei sinei seni ewe kapwung napanap ika grand jury.

**Taropwen Poraus Atutur:** lei ew angang fanitan ekkewe aturuan tipis ra uwau non taropwe seni ewe prosecutor mi ketiw seni court.

**Ese Wor Aponuwa ika “Nolo Contendere”:** Ew plea/atipeew mi wewe ngeni ewe plea ren tipis (fangeta). Ewe chon atutur meni epwe fini “nolo cotendere” (esapw wor aponuwa) fanitan chok mumutan seni court. Met mei sakofesen nefinan plea/atipeew ren tipis (guilty) me ewe plea ren “nolo contendere” (esapw wor aponua) ren ewe “nolo contendere” esapw eaea fanitan ewe chon atutur non ew mwokutukutun kapwung mi anongonong won ewe fofor/tipis mi chok wewe fengen.

**Plea/Atipeew:** Met ewe chon atutur a ponuwani ewe atutur mi fael fanitan (tipis/guilty, esapw tipis/esapw guilty, ika ese wor aponuwa).

**Me Mwan Arongarong:** Ew mwokutukut an ewe soukapwung epwe pwarata ika mi wor probable cause an epwe nuku pun ewe defendant mi fori ekkewe tipis.

**Popun me Wewen:** lei met epwe uwei ngeni emon aramas an epwe (emon chon afeiengaw) ar repwe nuku me apochokuna ar repwe sinei pun ewe aramas mi fori och metoch ese eoch.

**Prosecutor:** Emon lawyer ewe a wisan tupwuni ewe State non angangan me foforon kapwung ren an uwato ekkewe atutur ika foforungaw ngeni kapwung.

**Pwungun Kapwung:** Murin an ewe chon atutur epwe pwarata pwe a tipis ngeni ewe foforungaw, ika mi tipis/fangeta ren ewe foforungaw murin ewe kapwung, epwene fis kanapwus nupwen court epwe finata met niwiningaw epwe ngeni ewe chon atutur.

**Kapwung (Trial):** Ewe mwichen kapwung ikewe ewe/ ekkewe pisekin pwarata a pwa ngeni ewe soukapwung ika ekkewe chon jury (chon apwungapwung) ekkewe ra wisen finata ika ewe chon atutur a pwisin fori ekkewe tipis/foforungaw.

**Memef Won Ew Keis:** Ew memef, ren tipis/fangeta ika esapw tipis/fangeta, mi for seni ekkewe chon jury/apwungapwung ar repwe chargini ekkewe fofor a fen wesino.

## EKKOCH METTOCH FANITAN EW PWUNGUN KAPWUNG

- ▶ Probation fanitan ekkoch popun ren\*:
  - ◆ Nom non kanapwus/pureik
  - ◆ Meeni met ke tipis won
  - ◆ Tessin drug
  - ◆ Safei/anisin drug (ngeni chon nuing me chon semwen nukun)
  - ◆ Electronic mi nomw fan tumwun/chek
  - ◆ Angangen non Community
  - ◆ Aninis ren aukatiw angangan foforungaw/ nissou
  - ◆ Ekkoch prokram fanitan aninis
- ▶ Restitution (Aniwini/Meensefani)
- ▶ Ekkoch prokram mi wewe fengen\*\*
- ▶ Meeni met a tipis won
- ▶ Aukatiw nounoun naisenen unteng (Driver’s License)
- ▶ Sukunan kaeo drive (ren DUI)
- ▶ Nom non kanapwus/pureik
- ▶ Parole – Omw tou seni kanapwus en mi chok nomw fan nemenien kapwung/annuk. Ese wor parole ika a tori ewe aukukun taman an ewe chon fori tipis epwe nomw non kanapwus

\* No ngeni Hawaii Revised Statutes (HRS) 706-624 Conditions of Probation

\*\* No ngeni HRS 706-605.1

Ekkei charts ren criminal justice (pekin kapwung) ra for ar repwe ngeni (public) aramas meinisin ar repwe weweiti ewe criminal justice system (pekin annukun kapwung). Ekkei napanap mi pwarata ewin mettoch mi auchea epwe anisuk ren ponuwan ew watten tipis ika foforungaw. Esapw tupwuni an emon me emon keis.

Mi wewe ngeni chon Merika ren Disabilities Act, P.L. 101-336, ei mettoch mi kawor non ekkoch napanapan, ika kopwe eis/tungor. Ika ke mochen kut noum kapi mi for non ekkoch napanapan, kose mochen kokori ewe Department of the Attorney General, Crime Prevention & Justice Assistance Division ren (808)-585-1150.



**Ew Flow Chart ren Criminal Justice (Pekin Annukun Kapwung)**

**AN WATTE KEIS REN WATTEN TIPIS/ FOFORUNGAW**



**Department of the Attorney General  
Crime Prevention & Justice  
Assistance Division**

235 S. Beretania Street, Suite 401  
Honolulu, HI 96813  
Phone: (808) 586-1150  
Website: ag.hawaii.gov