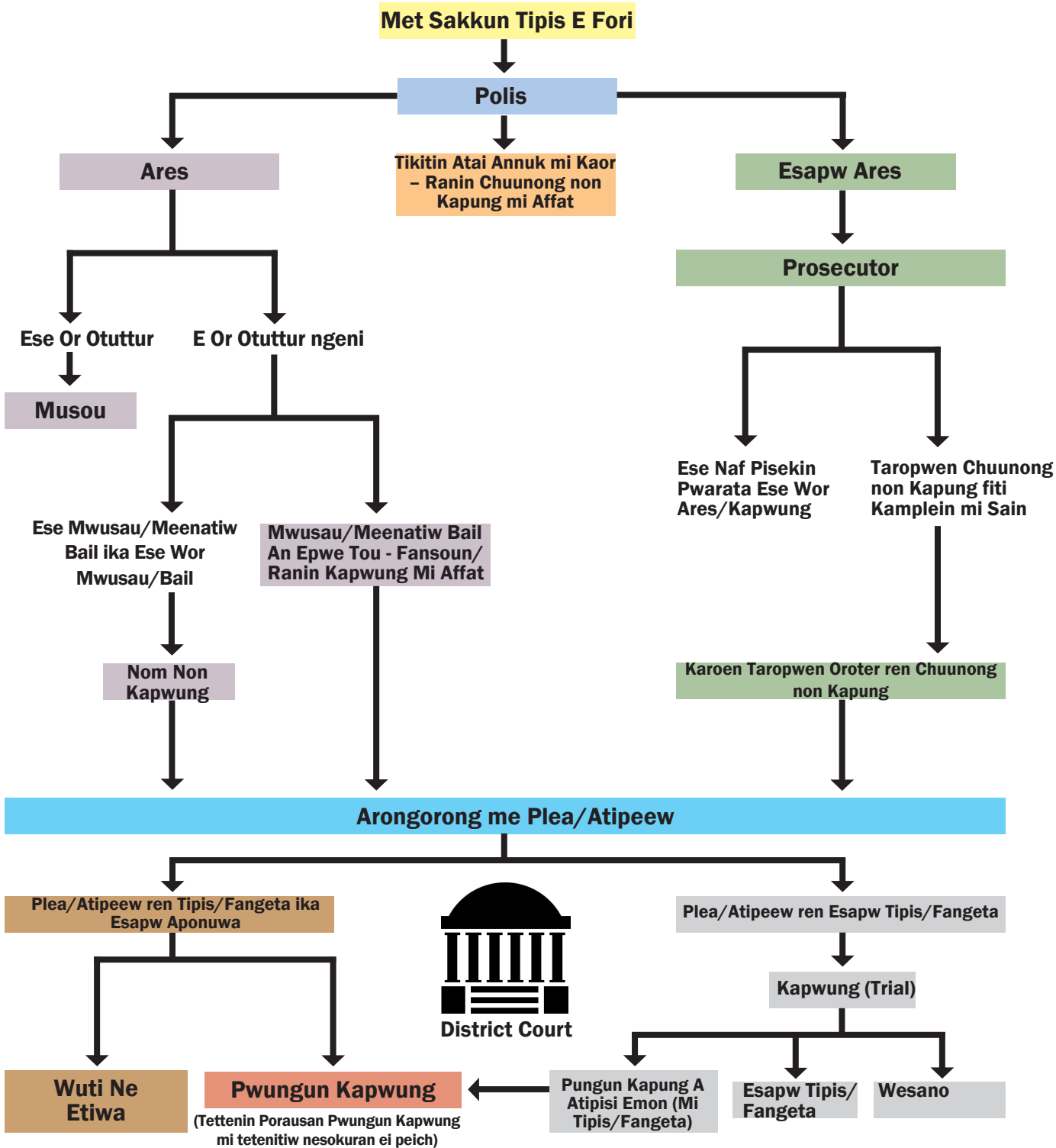


AN MI MUK CASE-IN TIPIS KUKKUN



AWEWEN

Kapwungun Ateten: Ew kapwung fanitan ar ngeni ewe chon atatur (defendant) ekkewe charges mi katou fanitan me inet fansoun ewe plea/atipeew ren esapw tipis/fangeta (not guilty), tipis/fangeta (guilty), ika esapw wor aponuwa (contest) epwe katonong ika faelini.

Bail (Amwasau): Ewe ukukun moni a fen katou seni polis ika court an epwe fis me mwan ewe chon kanapwus epwe tou seni pureik, an epwe fat pun ewe aramas epwe nomw non ewe fansoun kapwung.

Chon Atatur: Emon aramas a ares me atatur ren an fori mi ngaw ika tipis.

Wuti Ne Etiwa (Deferred Acceptance): Wuti Ne Etiwa ew Plea/Atipeew ren Tipis/Fangeta (Deferred Acceptance ren Guilty Plea (DAG)) ika Wuti Ne Etiwa ew Plea/Atipeew ren Esapw Wor Aponuwa (Deferred Acceptance ren No Contest Plea (DANC)) - ew mwich ika angangan chufengen me mwan kapwung fanitan ewe atipeew ngeni plea/atipeew ren tipis/fangeta ika esapw aponuwa epwe postponed (sopwosopwono) ika ewe chon atatur epwe tou nge esapw kapwung ika tipis/fangeta, ika a amuchano an fansoun ewe court mi ngeni an epwe fori.

Wesano: Ewe court mi tongeni awesano ewe keis fanitan ewe chon atatur ika: (1) mi amwuchano ewe keis ika kapwung, ese naf ika ese pochokun pisekin pwarata faniten ewe keis; ika (2) ekkewe chon jury/apwungapwung rese tori ewe finata iwe ewe court a finata pun ese eoch/tawe an ewe keis epwe sopwosopwono.

Tipis Kukkun: Atai annuk niwinin tipisin ese watte seni ew ier non imwen ares.

Ese Wor Aponuwa ika "Nolo Contendere": Ew plea/atipeew mi wewe ngeni ewe plea ren tipis (fangeta). Ewe chon atatur meni epwe fini "nolo cotendere" (esapw wor aponuwa) fanitan chok mumutan seni court.

Met mei sakofesen nefinan plea/atipeew ren tipis (guilty) me ewe plea ren “nolo contendere” (esapw wor aponua) ren ewe “nolo contendere” esapw eaea fanitan ewe chon atatur non ew mwokutukutun kapwung mi anongonong won ewe fofor/tipis mi chok wewe fengen.

Taropwen Oroter ren Chuunong non Kapung:

Taropwen kamplein mi affat ranin chuunong non kapung.

Plea/Atipeew: Met ewe chon atatur a ponuwani ewe atatur mi fael fanitan (tipis/guilty, esapw tipis/esapw guilty, ika ese wor aponuwa).

Popun me Wewen: lei met epwe uwei ngeni emon aramas an epwe (emon chon afeiengaw) ar repwe nuku me apochokuna ar repwe sinei pun ewe aramas mi fori och metoch ese eoch.

Prosecutor: Emon lawyer ewe a wisan tupwuni ewe State non angangan me foforon kapwung ren an uwato ekkewe atatur ika foforongaw ngeni kapwung.

Musou: Mwirin ares, ewe chon penuwani otuttur (ika defendant) epwe tongeni musou nge esap chiwen wor otuttur, ika musou iwe uti pwungun choosa.

Pwungun Kapwung: Murin an ewe chon atatur epwe pwarata pwe a tipis ngeni ewe foforongaw, ika mi tipis/fangeta ren ewe foforongaw murin ewe kapwung, epwene fis kanapwus nupwen court epwe finata met niwiningaw epwe ngeni ewe chon atatur.

Kapwung (Trial): Ewe mwichen kapwung ikewe ewe/ekkeke pisekin pwarata a pwa ngeni ewe soukapwung ika ekkewe chon jury (chon apwungapwung) ekkewe ra wisen finata ika ewe chon atatur a pwisin fori ekkewe tipis/foforungaw.

Annea eochu: Tipis kukkun ren case-in efitikoko neimw (ika domestic violence) nape ngeni rekan fis non ewe kinikinin kapungun famini (ika family court).

EKKOCH METTOCH FANITAN EW PWUNGUN KAPWUNG

- ▶ Probation fanitan ekkoch popun ren*:
 - ◆ Imwen Ares
 - ◆ Meeni met ke tipis won
 - ◆ Tessin drug
 - ◆ Safei/aninisin drug (ngeni chon nuing me chon semwen nukun)
 - ◆ Electronic mi nomw fan tumwun/chek
 - ◆ Angangen non Community
 - ◆ Aninis ren aukatiw angangan foforongaw/nissou
 - ◆ Ekkoch prokram fanitan aninis
 - ◆ Prokramin anisi eppet efitikoko neimw (ika domestic violence)
- ▶ Restitution (Aniwini/Meensefani)
- ▶ Ekkoch prokram mi wewe fengen**
- ▶ Meeni met a tipis won
- ▶ Aukatiw nounoun naisenen unteng (Driver’s License)
- ▶ Sukunan kaeo drive (ren DUI)
- ▶ Imwen Ares – Ares non ukuukun watteeta ngeni 1 ier

* No ngeni Hawaii Revised Statutes (HRS) 706-624 Conditions of Probation

** No ngeni HRS 706-605.1

Ekkei charts ren criminal justice (pekin kapwung) ra for ar repwe ngeni (public) aramas meinisin ar repwe weweiti ewe criminal justice system (pekin annukun kapwung). Ekkei napanap mi pwarata ewin mettoch mi auchea epwe anisuk ren ponuwan ew watten tipis ika foforongaw. Esapw tupwuni an emon me emon keis.

Mi wewe ngeni chon Merika ren Disabilities Act, P.L. 101-336, ei mettoch mi kawor non ekkoch napanapan, ika kopwe eis/tungor. Ika ke mochen kut noum kapi mi for non ekkoch napanapan, kose mochen kokori ewe Department of the Attorney General, Crime Prevention & Justice Assistance Division ren (808)-585-1150.



Ew Flow Chart ren Criminal Justice (Pekin Annukun Kapwung)

AN MI MUK CASE-IN TIPIS KUKKUN



**Department of the Attorney General
Crime Prevention & Justice Assistance Division**
235 S. Beretania Street, Suite 401
Honolulu, HI 96813
Phone: (808) 586-1150
Website: ag.hawaii.gov