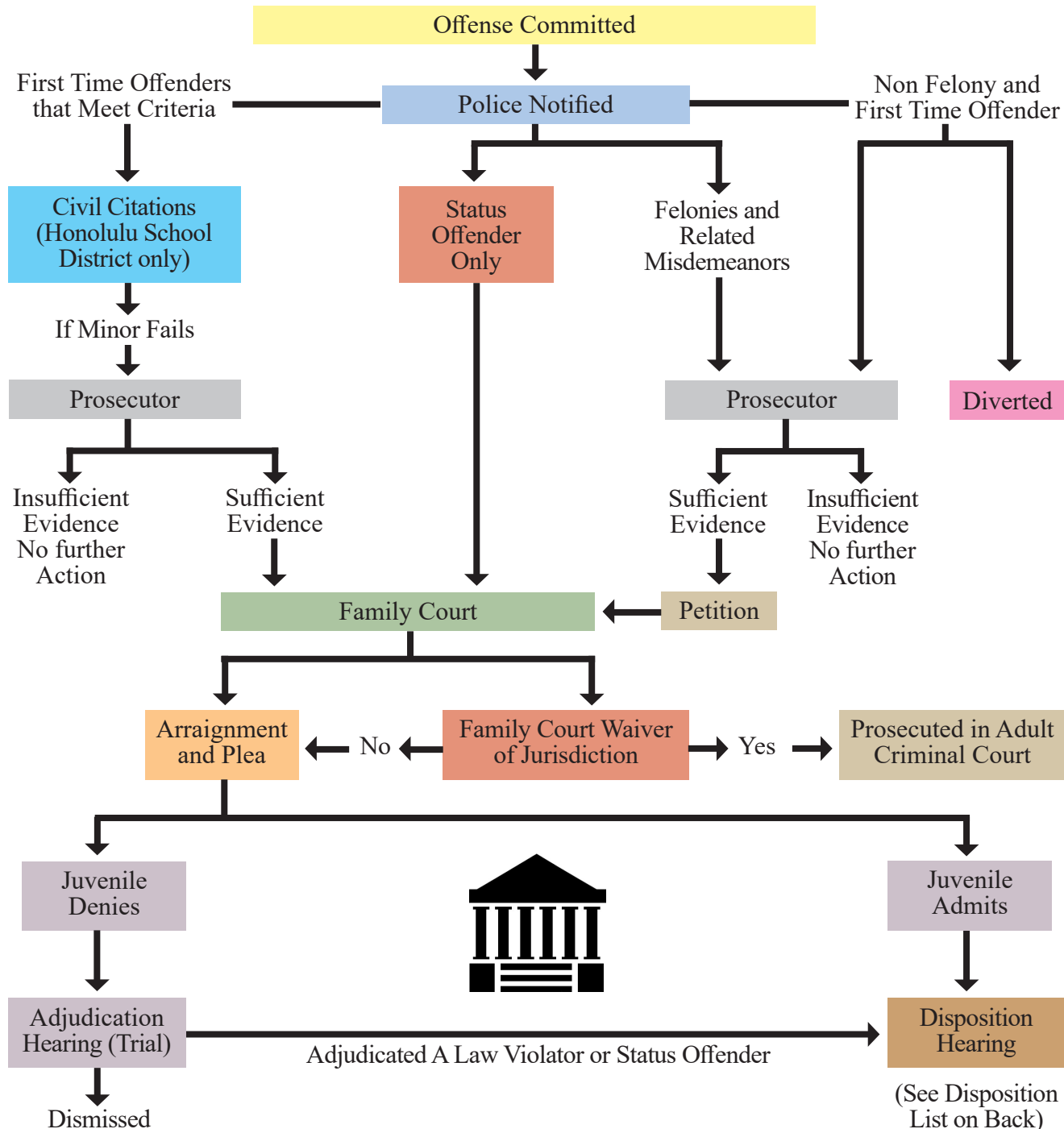


CITY & COUNTY OF HONOLULU – JUVENILE CASES



DEFINITIONS

Adjudication Hearing: Similar to a trial for adults; determines whether or not the juvenile committed the offense.

Arraignment: A hearing in which the juvenile is advised formally of the law violation charges against him/her, is advised of his/her constitutional rights and given the opportunity to enter a plea. If juvenile pleads innocent, the case is set for an adjudication hearing (i.e. trial).

Dismissed: Similar to adult found not guilty.

Disposition: Similar to a sentence in adult court. The court determines the consequences of a juvenile who has been adjudicated for or who has admitted the commission of an offense (see disposition list on back).

Felony: A crime which is considered more serious than a *misdemeanor* and with harsher penalties.

Informal Adjustments: A non-judicial, administrative, disposition of a referral, where the juvenile and parents agree to certain terms, without a court hearing.

Misdemeanor: A crime which is less serious than a *felony* but more serious than a petty misdemeanor.

Petition: A legal document filed in Family Court alleging an offense (law violation or status offense) committed by a juvenile.

Plea: The juvenile's formal answer to a petition (admits or denies).

Prosecutor: The government's attorney who is assigned to prosecute the pending petition against the juvenile.

Status Offender: A person under 18 years of age, who commits the act of truancy, runaway, or incorrigibility.

Waiver of Jurisdiction: The judicial process through which the Family Court may transfer the juvenile to the jurisdiction of the adult court. If jurisdiction is waived, the juvenile will be tried as an adult in the adult criminal court.

DISPOSITONS

- Aptitude Testing
- Community Service
- Community-Based Programs
- Delinquency Prevention Programs
- Detention Home
- Educational Programs
- Essay Writing
- Family Counseling
- Geographical Restrictions
- Hawaii Youth Correctional Facility
- Home Chores
- Home Detention
- Individual Counseling
- Letter of Apology
- Neighborhood Courts Mediation
- Outreach Programs
- Persons Restrictions
- Physical/Medical Examination
- Probation
- Restitution
- Shelter Facilities
- Substance Abuse Treatment
- Vocational Testing
- Youth-Initiated Programs

These criminal justice flow charts were produced to give the general public a better understanding of the criminal justice system. These are basic models and portray the most common sequence of events in response to serious criminal behavior. It is not representative of any individual case.

In accordance with the Americans with Disabilities Act, P.L. 101-336, this material is available in an alternate format, upon request. If you require an alternate format, please call the Department of the Attorney General, Crime Prevention & Justice Assistance Division at (808) 586-1150.

Criminal Justice Flow Chart

CITY & COUNTY OF HONOLULU

Juvenile Cases

English Translation



**Department of the Attorney General
Crime Prevention & Justice
Assistance Division**

235 S. Beretania Street, Suite 401
Honolulu, HI 96813

Phone: (808) 586-1150

Website: ag.hawaii.gov